



**Glenmore Mews, Eastbourne BN21 3XZ**

**welcome to**

**Glenmore Mews, Eastbourne**

\*\*\* OPEN DAY - 27TH JUNE 2026 \*\*\* \*\* GUIDE PRICE £250,000 - £260,000 \*\*\*

A beautifully presented two-bedroom end of terrace house, finished to a modern standard throughout. The property benefits from a stylish bathroom, a low-maintenance patio rear garden, and an allocated parking space.



### Entrance Porch

Door to the side aspect.

### Entrance Hall

### Lounge

12' 2" max x 13' 7" ( 3.71m max x 4.14m )

Double glazed window to the front aspect. Under stairs cupboard. Radiator. Door to the front aspect.

### Kitchen

9' 9" x 12' 2" ( 2.97m x 3.71m )

A range of wall and base units with work top over incorporating a stainless steel sink and drainer unit. Space for cooker with cooker hood above. Boiler. Space and plumbing for washing machine. Radiator. Door to the rear aspect leading to garden. Double glazed window to the rear aspect.

### First Floor Landing

Stairs leading from ground floor to first floor landing. Double glazed window to the side aspect.

### Bedroom 1

13' 9" into recess x 12' 2" into recess ( 4.19m into recess x 3.71m into recess )

Double glazed window to the front aspect. Built in wardrobes. Loft access. Over stairs cupboard. Radiator.

### Bedroom 2

9' 8" x 5' 8" ( 2.95m x 1.73m )

Double glazed window to the rear aspect. Radiator.

### Bathroom

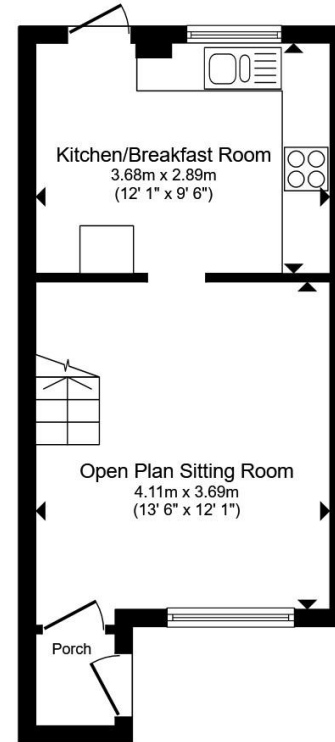
Comprising a bath with mixer taps and over head shower attachment. Low level W.C. Wash hand basin. Heated towel rail. Double glazed window to the rear aspect.

### Rear Garden

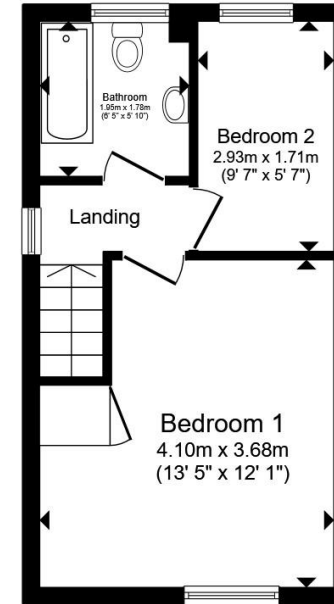
Patio seating area with side access. Outside tap. Planters.

### Parking

Allocated parking space to the front of the property.



Ground Floor



First Floor

Total floor area 52.6 m<sup>2</sup> (566 sq.ft.) approx

This floor plan is for illustrative purposes only. It is not drawn to scale. Any measurements, floor areas (including any total floor area), openings and orientation are approximate. No details are guaranteed, they cannot be relied upon for any purpose and they do not form part of any agreement. No liability is taken for any error, omission or misstatement. A party must rely upon its own inspection(s). Powered by [www.propertybox.io](http://www.propertybox.io)



**view this property online** [fox-and-sons.co.uk/Property/EBN121137](http://fox-and-sons.co.uk/Property/EBN121137)



welcome to

## Glenmore Mews, Eastbourne

- \*\*\* OPEN DAY - 27TH JUNE 2026 \*\*\*
- TWO BEDROOM END OF TERRACE HOUSE
- MODERN THROUGHOUT
- PRIVATE PATIO REAR GARDEN
- ALLOCATED PARKING SPACE

Tenure: Freehold EPC Rating: D

Council Tax Band: C

Guide Price

**£250,000 - £260,000**



Please note the marker reflects the postcode not the actual property

view this property online [fox-and-sons.co.uk/Property/EBN121137](https://fox-and-sons.co.uk/Property/EBN121137)



Property Ref:  
EBN121137 - 0002

1. MONEY LAUNDERING REGULATIONS Intending purchasers will be asked to produce identification documentation at a later stage and we would ask for your co-operation in order that there is no delay in agreeing the sale. 2. These particulars do not constitute part or all of an offer or contract. 3. The measurements indicated are supplied for guidance only and as such must be considered incorrect. Potential buyers are advised to recheck measurements before committing to any expense. 4. We have not tested any apparatus, equipment, fixtures or services and it is in the buyers interest to check the working condition of any appliances. 5. Where an EPC, or a Home Report (Scotland only) is held for this property, it is available for inspection at the branch by appointment. If you require a printed version of a Home Report, you will need to pay a reasonable production charge reflecting printing and other costs. 6. We are not able to offer an opinion either written or verbal on the content of these reports and this must be obtained from your legal representative. 7. Whilst we take care in preparing these reports, a buyer should ensure that his/her legal representative confirms as soon as possible all matters relating to title including the extent and boundaries of the property and other important matters before exchange of contracts.

Fox & Sons is a trading name of Sequence (UK) Limited which is registered in England and Wales under company number 4268443, Registered Office is Cumbria House, 16-20 Hockliffe Street, Leighton Buzzard, Bedfordshire, LU7 1GN. VAT Registration Number is 500 2481 05.

fox & sons



**01323 410911**



Eastbourne@fox-and-sons.co.uk



19 Cornfield Road, EASTBOURNE, East Sussex,  
BN21 4QD



**fox-and-sons.co.uk**