



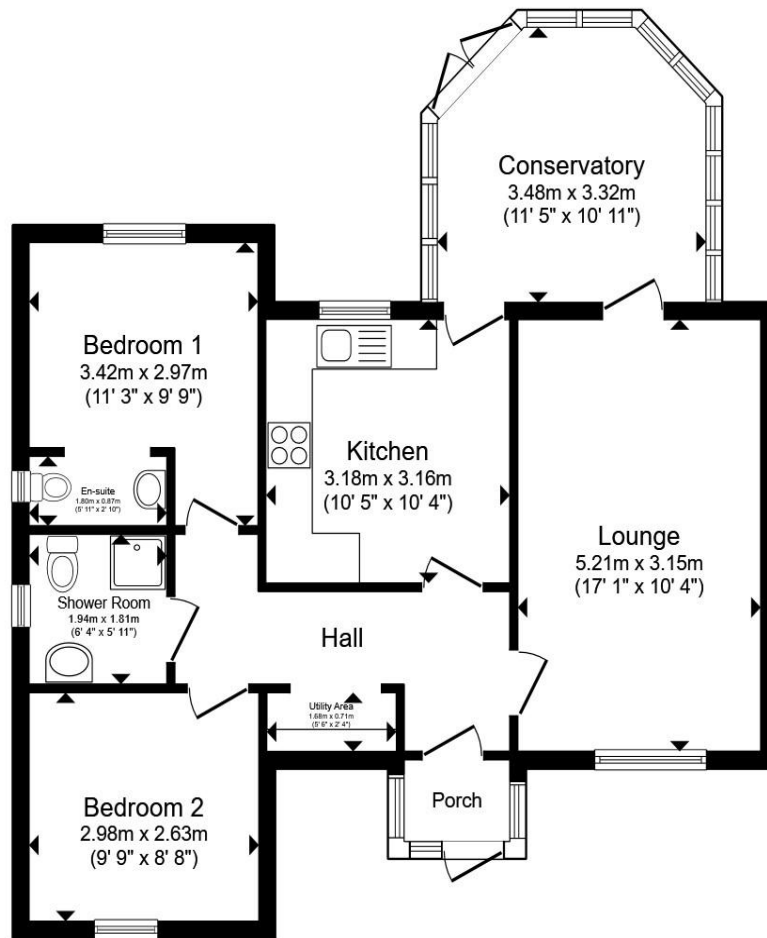
**Front Road, Murrow Wisbech PE13 4HU**

## Welcome to

### Front Road, Murrow Wisbech

Tucked away within a private village cul de sac, this modern detached bungalow offers well-proportioned and thoughtfully improved accommodation, ideal for those seeking single-level living in a peaceful setting. The property provides two double bedrooms, with the principal bedroom benefiting from its own en-suite cloakroom. A bright and welcoming 17' lounge forms the heart of the home, while the PVCu conservatory overlooks the rear garden, creating an additional reception space perfect for relaxing or entertaining. The refitted shower room has been updated in a contemporary style, complementing the overall presentation of the property. Externally, there is multi-vehicle off-road parking leading to a single garage, together with a low-maintenance rear garden. A particular feature is the insulated cabin with power and lighting connected, ideal as a home office, hobby room or studio. The bungalow also benefits from owned solar panels, enhancing energy efficiency. Combining practicality, modern upgrades and a desirable village location, this is an excellent opportunity in a sought-after setting.





**Front Porch**

**Entrance Hall**

**Lounge**

**Kitchen**

**Conservatory**

**Bedroom One**

**En-Suite Cloakroom**

**Bedroom Two**

**Shower Room**

**Garage**

**Cabin**

**Agents Note:**

'There is a easement on the title, please enquire with the branch' - private cul-de-sac

'Heating to the property is served by LPG. Please contact the branch for more details'

Total floor area 71.0 m<sup>2</sup> (764 sq.ft.) approx

This floor plan is for illustrative purposes only. It is not drawn to scale. Any measurements, floor areas (including any total floor area), openings and orientation are approximate. No details are guaranteed, they cannot be relied upon for any purpose and they do not form part of any agreement. No liability is taken for any error, omission or misstatement. A party must rely upon its own inspection(s). Powered by [www.propertybox.io](http://www.propertybox.io)



## Welcome to

### Front Road, Murrow Wisbech

- Modern detached bungalow
- Two double bedrooms with en-suite cloakroom to master
- PVCu Conservatory
- Owned solar panels
- Private cul de sac location

Tenure: Freehold EPC Rating: C

Council Tax Band: B

# £230,000



### Directions to this property:

From Wisbech Freedom Bridge roundabout, take the A1101 signposted Long Sutton. Proceed out of town and at the second set of traffic lights turn left signposted Leverington and Parson Drove. Continue along into Leverington Common and take note of Else's furniture warehouse on your right hand side. At the crossroads continue straight on signposted Murrow. At the next crossroads follow the road round to the left and then round to the right into Front Road. Continue along and the property will be found on your left hand side.



Please note the marker reflects the postcode not the actual property

**view this property online** [williamhbrown.co.uk/Property/WSB128651](http://williamhbrown.co.uk/Property/WSB128651)



Property Ref:  
WSB128651 - 0002

1. MONEY LAUNDERING REGULATIONS Intending purchasers will be asked to produce identification documentation at a later stage and we would ask for your co-operation in order that there is no delay in agreeing the sale. 2. These particulars do not constitute part or all of an offer or contract. 3. The measurements indicated are supplied for guidance only and as such must be considered incorrect. Potential buyers are advised to recheck measurements before committing to any expense. 4. We have not tested any apparatus, equipment, fixtures or services and it is in the buyers interest to check the working condition of any appliances. 5. Where an EPC, or a Home Report (Scotland only) is held for this property, it is available for inspection at the branch by appointment. If you require a printed version of a Home Report, you will need to pay a reasonable production charge reflecting printing and other costs. 6. We are not able to offer an opinion either written or verbal on the content of these reports and this must be obtained from your legal representative. 7. Whilst we take care in preparing these reports, a buyer should ensure that his/her legal representative confirms as soon as possible all matters relating to title including the extent and boundaries of the property and other important matters before exchange of contracts.

William H Brown is a trading name of Sequence (UK) Limited which is registered in England and Wales under company number 4268443, Registered Office is Cumbria House, 16-20 Hockliffe Street, Leighton Buzzard, Bedfordshire, LU7 1GN. VAT Registration Number is 500 2481 05.

william h brown



**01945 464451**



[Wisbech@williamhbrown.co.uk](mailto:Wisbech@williamhbrown.co.uk)



20 High Street, WISBECH, Cambridgeshire,  
PE13 1DE



[williamhbrown.co.uk](http://williamhbrown.co.uk)