



**Hawthorne Grove, March PE15 8HU**

**welcome to**

**Hawthorne Grove, March**

\*\* NO ONWARD CHAIN \*\* Modern Detached House - Three Bedrooms - En Suite to Bedroom One

Kitchen/Breakfast Room - Utility Room - Enclosed Rear Garden - Off Road Parking - Viewing Recommended



### **Entrance Door**

### **Hall**

Radiator. Stairs leading off.

### **W.C.**

Vanity wash hand basin. Low level w.c. Radiator. Extractor fan.

### **Lounge**

Window to front. Radiator. TV point.

### **Kitchen/Breakfast Room**

Window to rear. French doors to garden. Single drainer sink with mixer taps, 1 1/4 bowl. Integrated dishwasher. Integrated wine cooler. Integrated washing machine. Electric double oven, gas hob and cooker hood above. Wall units with matching work surfaces and storage under.

### **Utility Room**

Window to rear. Door to rear. Storage cupboard with gas central heating boiler. Floor to ceiling cupboards including full fridge and full freezer

### **Stairs To First Floor Landing**

Radiator. Airing cupboard housing hot water tank.

### **Bedroom One**

Window to side. Radiator. TV point. Air conditioning unit. Loft access (which is boarded). Fitted wardrobes with sockets and lights.

### **En Suite**

Window to rear. Shower cubicle. Radiator. Low level w.c. Extractor fan.

### **Bedroom Two**

Window to front. Radiator. Air conditioning unit. TV point.

### **Bedroom Three**

Window to front. Radiator. Air conditioning unit.

### **Family Bathroom**

Window to rear. Panel bath with shower above. Low level w.c. Pedestal wash hand basin. Radiator. Extractor fan.

### **Outside**

Front garden is open plan with off road parking to the side.

Rear garden is laid to astro turf. Outside tap. Outside light. Shed with electricity.



**view this property online** [williamhbrown.co.uk/Property/MCH113790](http://williamhbrown.co.uk/Property/MCH113790)

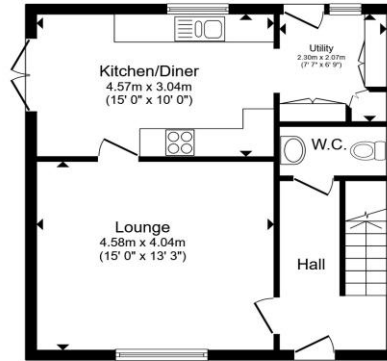


welcome to

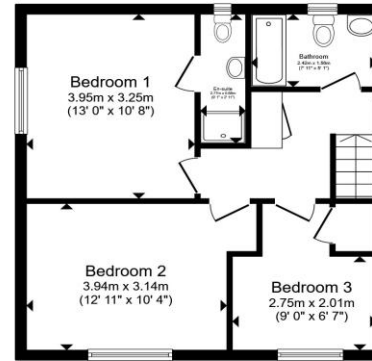
## Hawthorne Grove, March

- Modern Detached House
- Three Bedrooms
- En Suite to Bedroom One
- Kitchen plus Utility Room
- Enclosed Rear Garden

Tenure: Freehold  
EPC Rating: C  
Council Tax Band: C



Ground Floor



First Floor

**£315,000**

Total floor area 97.1 m<sup>2</sup> (1,045 sq.ft.) approx  
This floor plan is for illustrative purposes only. It is not drawn to scale. Any measurements, floor areas (including any total floor area), openings and orientation are approximate. No details are guaranteed, they cannot be relied upon for any purpose and they do not form part of any agreement. No liability is taken for any error, omission or misstatement. A party must rely upon its own inspection(s). Powered by www.propertybox.io



Please note the marker reflects the postcode not the actual property

view this property online [williamhbrown.co.uk/Property/MCH113790](http://williamhbrown.co.uk/Property/MCH113790)



Property Ref:  
MCH113790 - 0003

1. MONEY LAUNDERING REGULATIONS Intending purchasers will be asked to produce identification documentation at a later stage and we would ask for your co-operation in order that there is no delay in agreeing the sale. 2. These particulars do not constitute part or all of an offer or contract. 3. The measurements indicated are supplied for guidance only and as such must be considered incorrect. Potential buyers are advised to recheck measurements before committing to any expense. 4. We have not tested any apparatus, equipment, fixtures or services and it is in the buyers interest to check the working condition of any appliances. 5. Where an EPC, or a Home Report (Scotland only) is held for this property, it is available for inspection at the branch by appointment. If you require a printed version of a Home Report, you will need to pay a reasonable production charge reflecting printing and other costs. 6. We are not able to offer an opinion either written or verbal on the content of these reports and this must be obtained from your legal representative. 7. Whilst we take care in preparing these reports, a buyer should ensure that his/her legal representative confirms as soon as possible all matters relating to title including the extent and boundaries of the property and other important matters before exchange of contracts.



william h brown



01354 654545



march@williamhbrown.co.uk



34 High Street, MARCH, Cambridgeshire, PE15 9JR



[williamhbrown.co.uk](http://williamhbrown.co.uk)