

# SNELLERS

ESTATE AGENTS



## Twickenham Road, TW11

£549,950

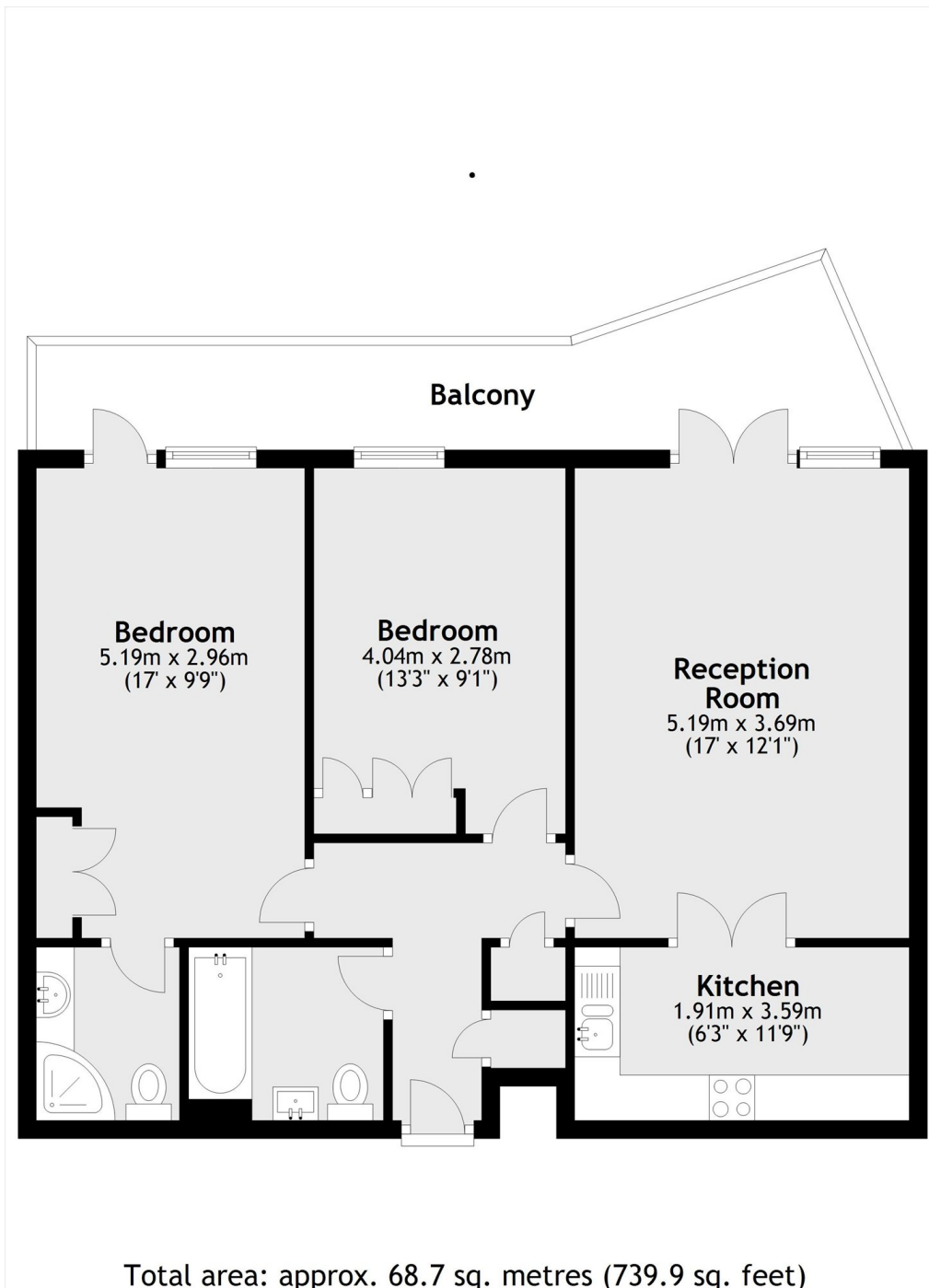
Offered with no onward chain is this spacious two bedroom apartment on the banks of the river Thames and it benefits from having a large private balcony with river views, secure underground parking and access to a gymnasium.

Fairmile House forms part of 'The Wharf' development and is situated on the riverside and less than one mile from Teddington mainline station which offers a direct link to London Waterloo. Teddington high street is a few hundred yards away and offers a vast array of boutique shops, pubs and restaurants.

- Two Bedrooms • No Onward Chain • Large Private Balcony •
- River Views • Underground Parking • Gym •

# SNELLERS

ESTATE AGENTS



Snellers Teddington Sales  
74 Broad Street  
Teddington  
TW11 8QX  
020 8408 8040  
teddingtonsales@snellers.co.uk

Energy Rating: C We aim to make our particulars both accurate and reliable. However they are not guaranteed; nor do they form part of an offer or contract. If you require clarification on any points then please contact us, especially if you're traveling some distance to view. Please note that appliances and heating systems have not been tested and therefore no warranties can be given as to their good working order