









We are delighted to offer for sale this superb three bedroom semi detached property, located in the popular area of Grindon. The beautifully presented accommodation boasts entrance hall, lounge, fabulous modern kitchen/diner with integrated appliances, three first floor bedrooms and a modern bathroom/wc. Externally there is a gravelled garden to the front and side with driveway providing off street parking and a garden to the rear with artificial lawns. Benefitting from UPVC double glazing and gas central heating. The property is well placed for easy access to the A19, Doxford International Business Park, Nissan complex and Sunderland City Centre. Early viewing is a must!

MAIN ROOMS AND DIMENSIONS

Ground Floor

Access via UPVC entrance door into

Reception Hall



Stairs to the first floor and doors to

Lounge 17'7" x 11'3"



Double glazed window to the front and double glazed UPVC French patio doors to rear. Double radiator.

Kitchen/Diner 17'7" x 9'5"



Range of wall and base units with countertops over incorporating a single bowl sink and drainer unit with mixer tap. Integrated oven with electric hobs and extractor fan.

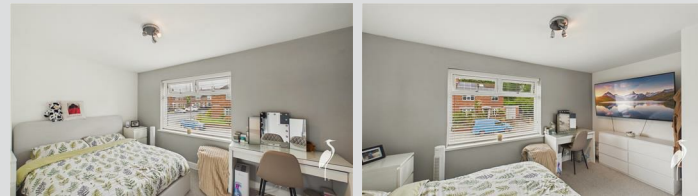
Space provided for a washing machine and fridge freezer. 2x double glazed windows and UPVC door to rear. Radiator and utility cupboard providing space for a tumble dryer.

First Floor Landing



Landing with double glazed window to the rear, access point to loft and a radiator.

Bedroom 1 9'4" x 14'8"



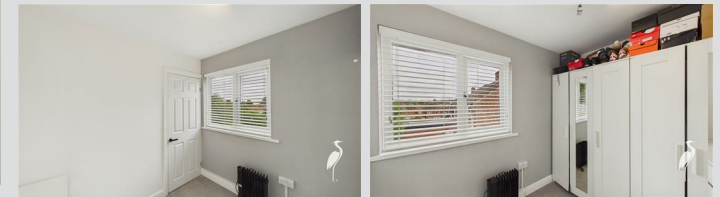
Double glazed window to the front, storage cupboard and a radiator.

Bedroom 2 11'10" x 9'8"



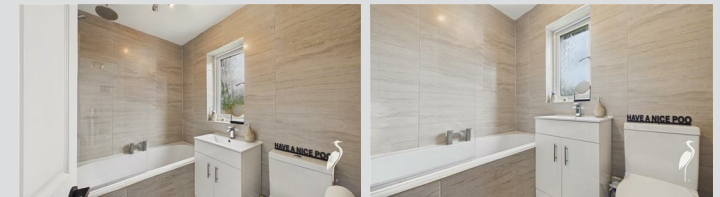
Doubly glazed window to the front and a radiator.

Bedroom 3 8'1" x 8'2"



Double glazed window to the rear.

Bathroom



Bath with dual head waterfall shower over, low level WC and a hand wash basin set into vanity unit. Double glazed window to the rear and a chrome heated towel rail.

Visit www.peterheron.co.uk or call 01915103323

Tried. Trusted. Recommended. City Branch 20 Fawcett Street Sunderland SR1 1RH Fulwell Branch 15 Sea Road Fulwell Sunderland SR6 9BS

MAIN ROOMS AND DIMENSIONS

Outside



Generously sized front and rear gardens with the rear benefitting from a shed and the front benefitting from a gated driveway providing off street parking.

Tenure FH

We are advised by the Vendors that the property is Freehold. Any prospective purchaser should clarify this with their Solicitor.

Council TaxBand

The Council Tax is Band A.

Important Notice

Peter Heron Ltd for themselves and for the vendors of this property whose agents they are, give notice that:-
The particulars are set out for general guidance only for the intending Purchasers and do not constitute part of an offer or contract. Whilst we endeavour to make our sales particulars accurate and reliable, if there is anything of particular importance which you feel may influence your decision to purchase, please contact the office and we will be pleased to check the information. Do so particularly, if contemplating travelling some distance to view the property.
All descriptions, dimensions, references to conditions and necessary permissions for use and occupation and other details are given in good faith, and are believed to be correct, however any intending purchasers should not rely on them that statements are representations of fact, but must satisfy themselves by inspection or otherwise as to the correctness of each of them. Independent property size verification is recommended.

Lease details, service charges and ground rent (where applicable) are given as a guide only and should be checked and confirmed by your Solicitor prior to exchange of

contracts. No person in the employment of Peter Heron Ltd has any authority to make or give any representation or warranty whatever in relation to this property or these particulars, nor to enter into any contract on behalf of Peter Heron Ltd, nor into any contract on behalf of the Vendor. The copyright of all details and photographs remain exclusive to Peter Heron Ltd.

Please note that in the event the purchaser uses the services of Peter Heron Conveyancing in the purchase of their home, Peter Heron Ltd will be paid a completion commission of £300.00 by Movewithus Ltd.

Viewings Fst

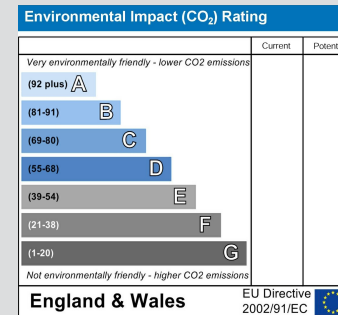
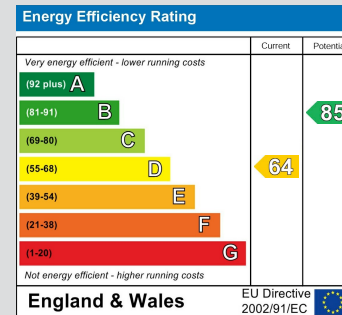
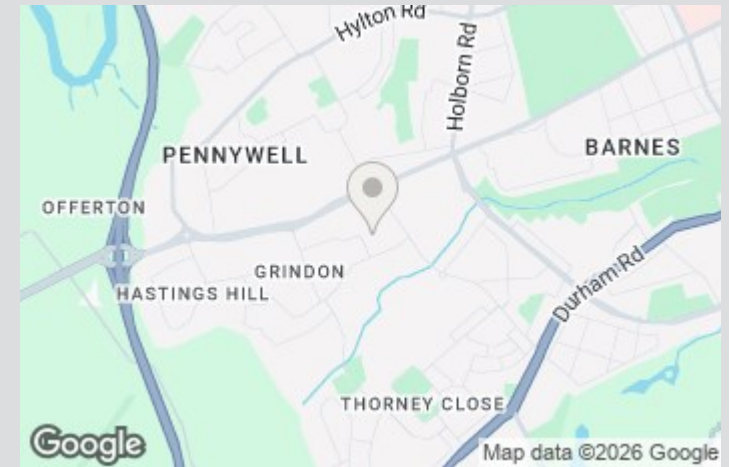
To arrange an appointment to view this property contact our Fawcett Street branch on 0191 5103323.

Opening Times

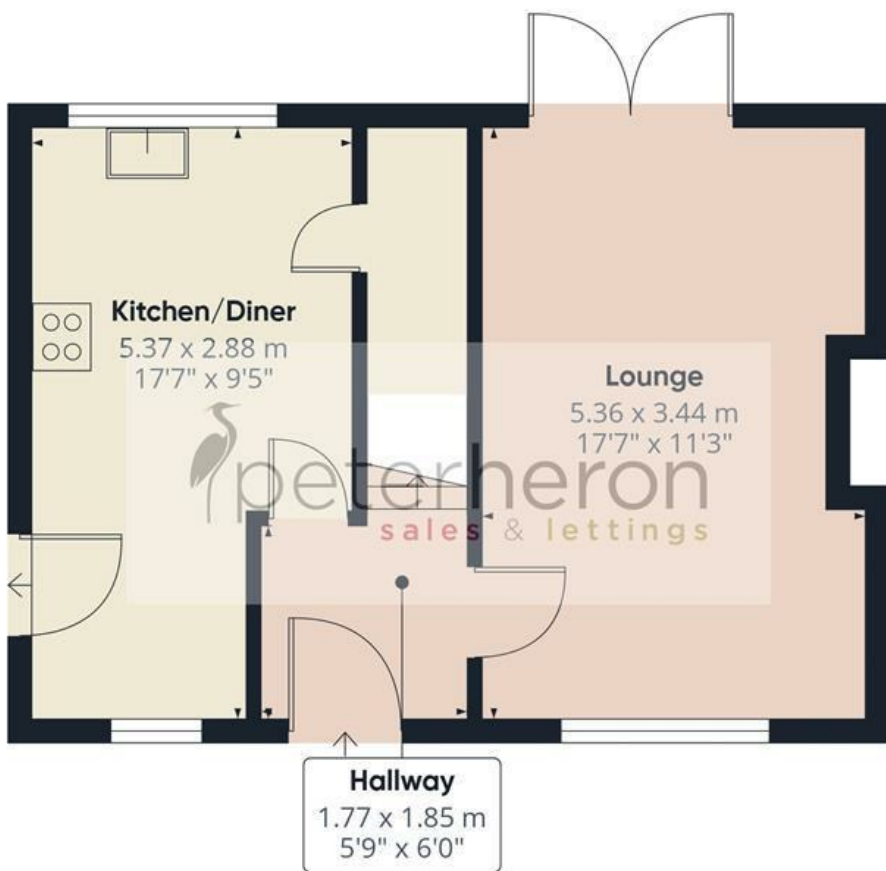
Monday - Friday 9.00am to 5.00pm
Saturday 9.00am to 12noon

Ombudsman

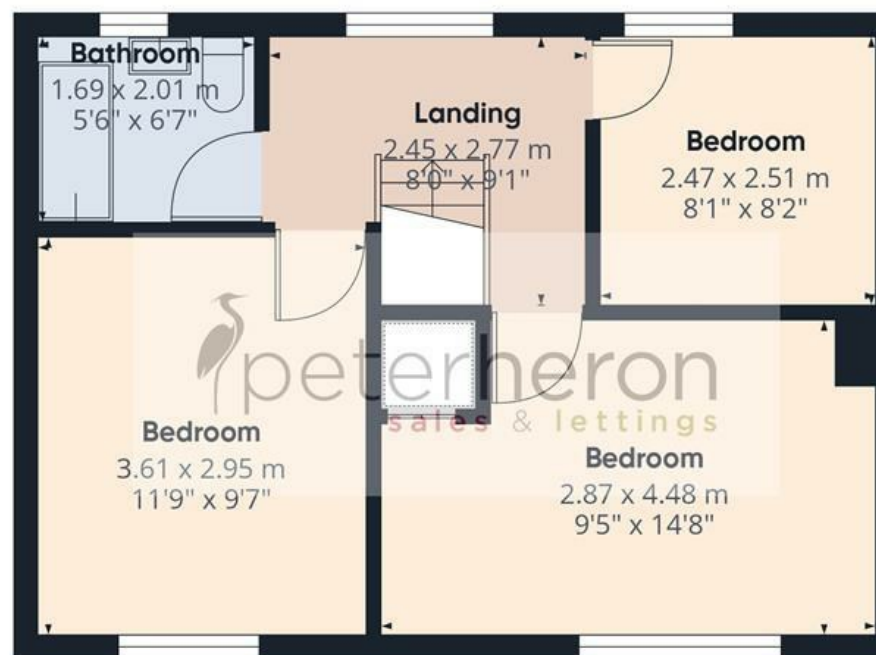
Peter Heron Estate Agents are members of The Property Ombudsman and subscribe to The Property Ombudsman Code of Practice.



Visit www.peterheron.co.uk or call 01915103323



Ground Floor



First Floor

Approximate total area⁽¹⁾

76.2 m²
820 ft²

(1) Excluding balconies and terraces

Calculations reference the RICS IPMS 3C standard. Measurements are approximate and not to scale. This floor plan is intended for illustration only.

GIRAFFE360

