

# SNELLERS

ESTATE AGENTS



## Deerhurst Crescent, TW12

£400,000

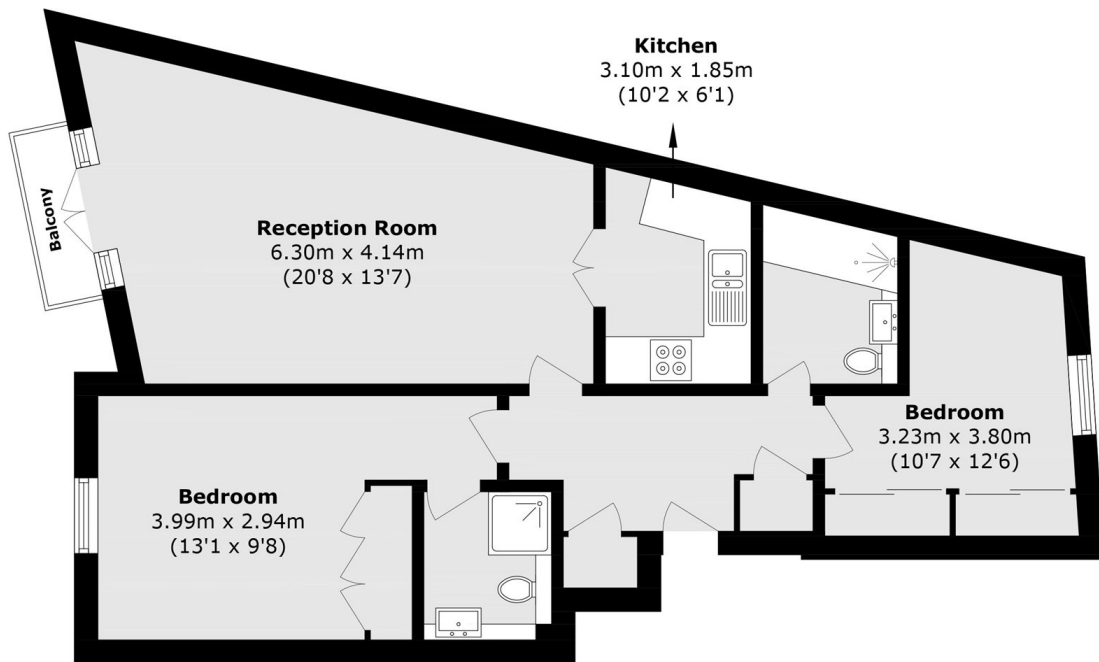
Offers Over £400,000. Situated within a popular gated development backing onto the perimeter wall of the Royal Bushy Park is this first floor two bedroom two bathroom apartment offering approximately 700 sq ft of bright and spacious lateral accommodation. The property is offered with allocated parking, a long lease, a balcony with views over Bushy Park and no forward chain.

Deerhurst Crescent is ideally located for Hampton Hill Theatre and an array of highly desirable boutique shops, coffee shops and popular bars and restaurants. Both Fulwell train station and the Royal Bushy Park are nearby.

- Gated Development • Two Double Bedrooms • Views over Bushy Park •
- Good Condition • Allocated Parking • No Chain •

# SNELLERS

ESTATE AGENTS



Total area (approx.): 64.9 sq. m (698.5 sq. ft)  
Balcony area (approx.): 1.5 sq. m (16.1 sq. ft)

Snellers Hampton Hill Sales  
197-201 High Street  
Hampton Hill  
TW12 1NL  
020 8783 0083  
hamptonsales@snellers.co.uk

Energy Rating: B We aim to make our particulars both accurate and reliable. However they are not guaranteed; nor do they form part of an offer or contract. If you require clarification on any points then please contact us, especially if you're traveling some distance to view. Please note that appliances and heating systems have not been tested and therefore no warranties can be given as to their good working order