



Peart Place, LEEDS LS10 4FR

welcome to

Peart Place, LEEDS

FABULOUS FOUR bedroom MID TOWN HOUSE, MODERN and WELL PRESENTED throughout, DOWNSTAIRS WC, KITCHEN, LIVING/DINING ROOM, three first floor bedrooms and HOUSE BATHROOM, master bedroom to the second floor with ENSUITE facilities. ENCLOSED REAR GARDEN, SEPARATE GARAGE with off street parking.

Entrance Hall

Composite door to the front, gas central heating radiator, stairs leading to the first floor landing.

Downstairs Wc

Low level flush WC, wash hand basin, gas central heating radiator.

Kitchen

Has a fully fitted kitchen with a range of wall and base units with complementary work surfaces over, incorporating sink and drainer, electric oven, gas hob, space for appliances, uPVC double glazed bay window to the front.

Living/Dining Room

uPVC double glazed patio doors to the rear, two gas central heating radiators, storage cupboard.

First Floor Landing

Cupboard housing the gas central heating boiler. Access to bedrooms two, three and four and the house bathroom. Stairs leading to the second floor landing.

Bedroom Two

uPVC double glazed window to the front, gas central heating radiator, fitted wardrobes.

Bedroom Three

uPVC double glazed window to the rear, gas central heating radiator.

Bedroom Four

uPVC double glazed window to the front.

Second Floor Bedroom One

uPVC double glazed window to the front, gas central heating radiator, storage cupboards, loft access

which is boarded. Access into the ensuite.

Ensuite

A four piece modern bathroom suite comprising of a freestanding bath, walk-in shower, low level flush WC, wash hand basin, tiled floor, heated towel rail, two double glazed skylights.

Exterior

Separate garage with parking spaces and to the rear is an enclosed well maintained lawned garden with decked areas and fence boundaries, a perfect space for all the family to enjoy.





view this property online williamhbrown.co.uk/Property/MLY111836



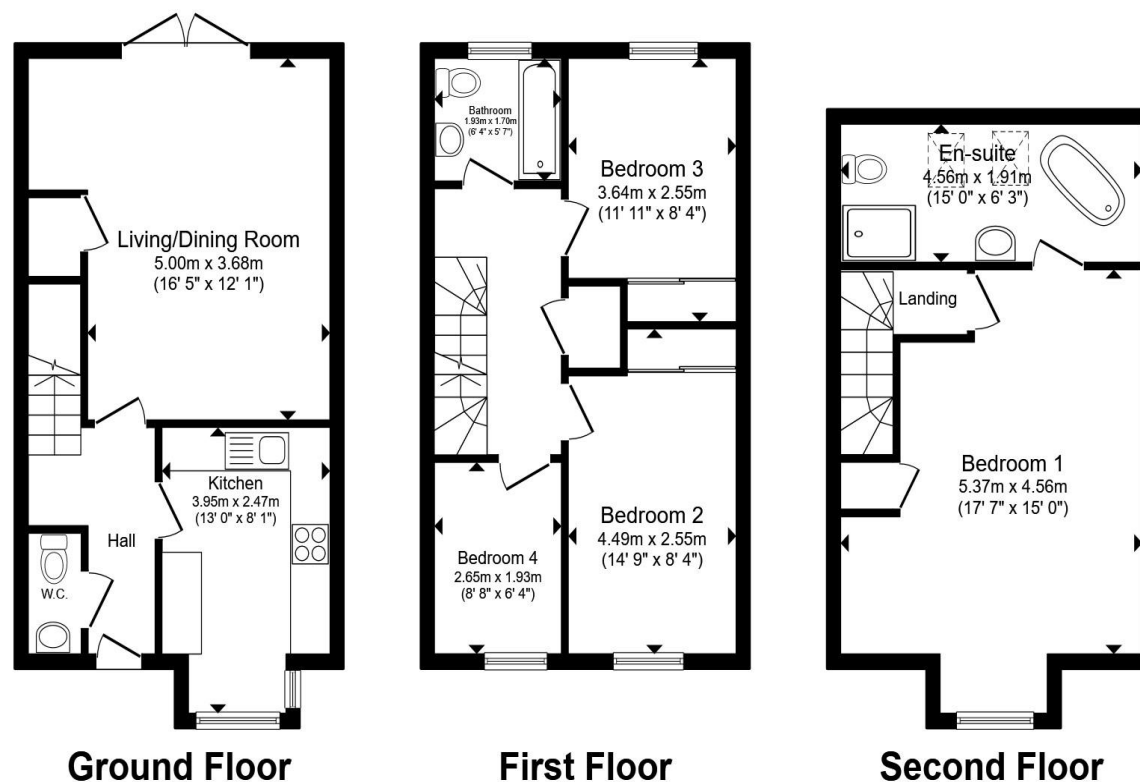
welcome to

Peart Place, LEEDS

- Four bedroom mid town house
- Modern and well presented throughout
- Ready to move into
- Ensuite to master bedroom
- Enclosed rear garden

Tenure: Freehold EPC Rating: C
Council Tax Band: C

£300,000



Ground Floor

First Floor

Second Floor

Total floor area 111.5 m² (1,200 sq.ft.) approx

This floor plan is for illustrative purposes only. It is not drawn to scale. Any measurements, floor areas (including any total floor area), openings and orientation are approximate. No details are guaranteed, they cannot be relied upon for any purpose and they do not form part of any agreement. No liability is taken for any error, omission or misstatement. A party must rely upon its own inspection(s). Powered by www.propertybox.io



view this property online williamhbrown.co.uk/Property/MLY111836



Property Ref:
MLY111836 - 0005

1. MONEY LAUNDERING REGULATIONS Intending purchasers will be asked to produce identification documentation at a later stage and we would ask for your co-operation in order that there is no delay in agreeing the sale. 2. These particulars do not constitute part or all of an offer or contract. 3. The measurements indicated are supplied for guidance only and as such must be considered incorrect. Potential buyers are advised to recheck measurements before committing to any expense. 4. We have not tested any apparatus, equipment, fixtures or services and it is in the buyers interest to check the working condition of any appliances. 5. Where an EPC, or a Home Report (Scotland only) is held for this property, it is available for inspection at the branch by appointment. If you require a printed version of a Home Report, you will need to pay a reasonable production charge reflecting printing and other costs. 6. We are not able to offer an opinion either written or verbal on the content of these reports and this must be obtained from your legal representative. 7. Whilst we take care in preparing these reports, a buyer should ensure that his/her legal representative confirms as soon as possible all matters relating to title including the extent and boundaries of the property and other important matters before exchange of contracts.

William H Brown is a trading name of Sequence (UK) Limited which is registered in England and Wales under company number 4268443, Registered Office is Cumbria House, 16-20 Hockliffe Street, Leighton Buzzard, Bedfordshire, LU7 1GN. VAT Registration Number is 500 2481 05.


william h brown



0113 253 7100



Morley@williamhbrown.co.uk



80 Queen Street, Morley, LEEDS, West Yorkshire, LS27 9BP



williamhbrown.co.uk