



**4 Dudley Street**

, Bedford, MK40 3TB

**£475,000**



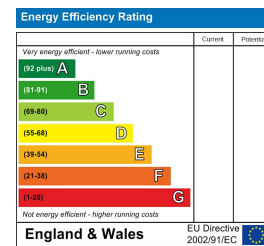
## Floor Plan



## Area Map

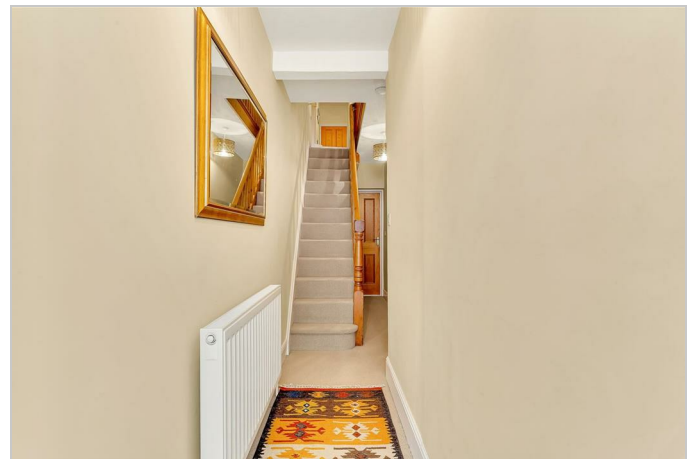


## Energy Efficiency Graph



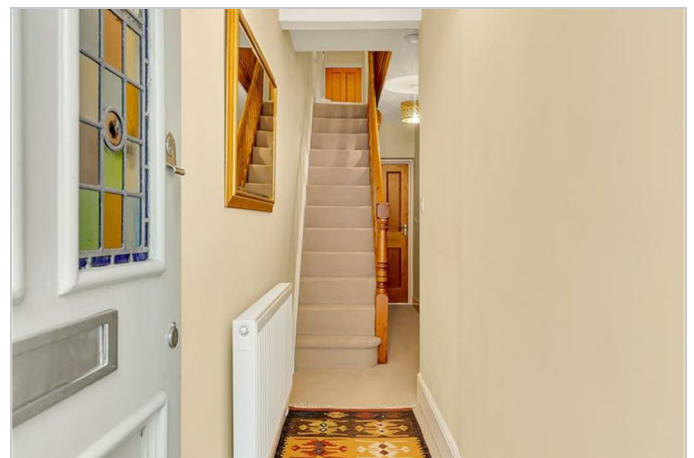
## Viewing

Please contact our Bedford Office on 01234 216612 if you wish to arrange a viewing appointment for this property or require further information.



This period semi-detached home has been thoroughly and thoughtfully refurbished by the present owner and occupies an enviable position within the Castle Road area, right next to Russell Park. Arranged over three floors, the accommodation now provides three double bedrooms, a fourth bedroom/study (currently used as a dressing room), first and second floor shower rooms as well as a useful ground floor utility room and WC. The spacious living accommodation includes a combined sitting/dining room with bay window, an extensively fitted kitchen/breakfast room, replaced around 18 months ago including some integrated appliances, and there is a side bay window for additional space and light. Further recent improvements have been made such as a new boiler, radiators and immersion heater, insulated floors, new internal doors and uPVC windows. Outside, the low-maintenance garden enjoys a sunny west-facing aspect.

Dudley Street is situated within the highly popular 'Castle Quarter' of the town, amongst the choice of coffee shops, cafes and other specialist shops such as a butchers and Italian delicatessen. In addition to Russell Park, The Embankment is close by for riverside walks, the local primary school is highly regarded and Bedford town centre is within easy reach. For the commuter, Bedford's mainline rail station offers fast links into London St Pancras. EER: TBC



163 Castle Road, MK40 3RT

Tel: 01234 216612

[www.hollandsmith.co.uk](http://www.hollandsmith.co.uk)