

Frank Harris & Co.



Witley Court, WC1N

£800,000

This well-presented two-bedroom apartment is located on the fifth floor of a sought-after 1930s portered mansion block. Heating and hot water are included within the service charge. Previously let as a three-bedroom property, it offers excellent flexibility and would make an attractive rental investment.



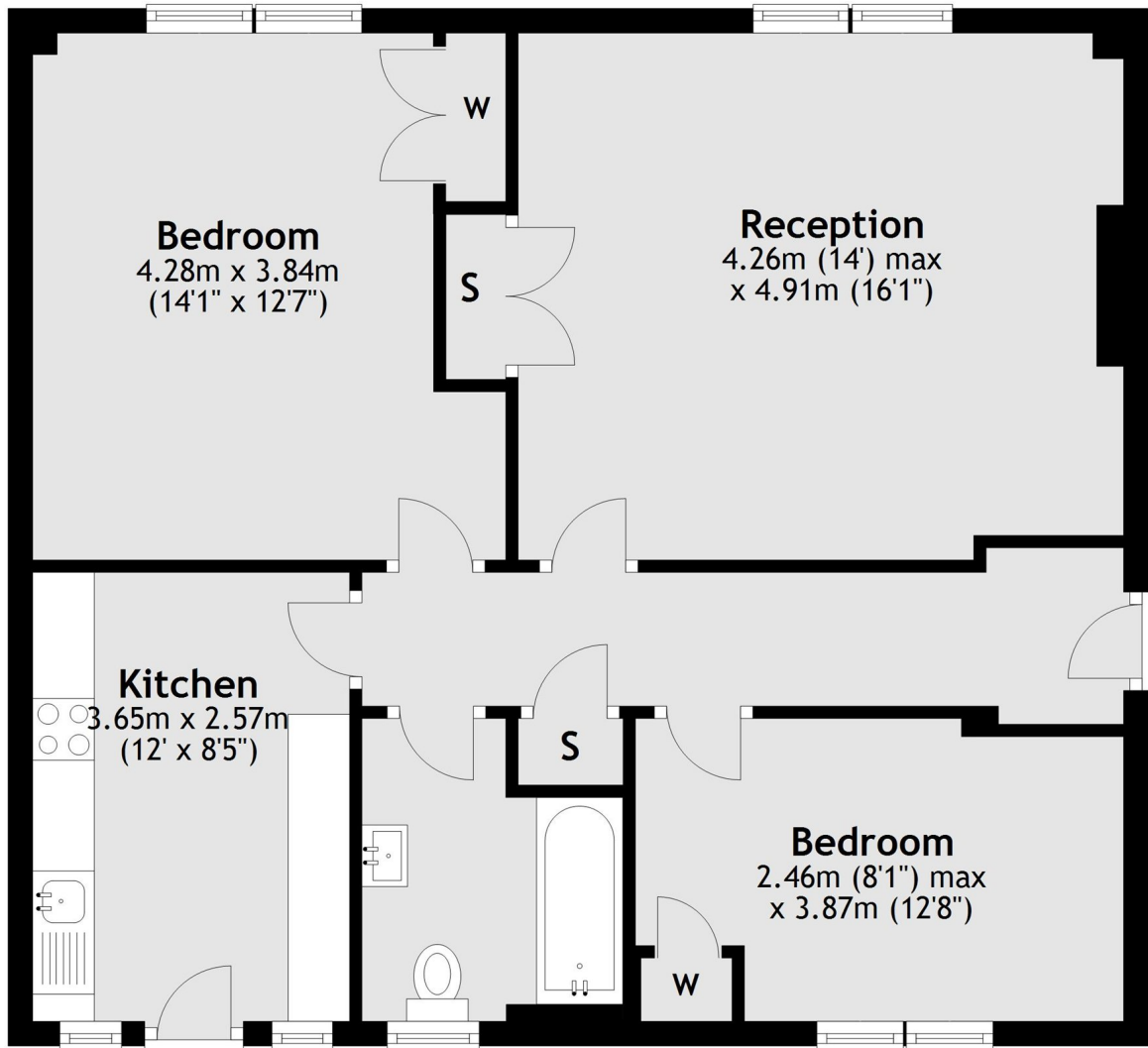
Situated on Coram Street in the heart of Bloomsbury, this two-bedroom apartment is well positioned for Russell Square Underground Station, The Brunswick Centre, and a range of renowned universities, including UCL, LSE, and King's College London.

- Fifth Floor • Lift Access • Two Double Bedrooms •
- Porter Service • Separate Kitchen • Mansion Block •



Frank Harris & Co.

Fifth Floor



Total area: approx. 71.1 sq. metres (764.9 sq. feet)

Frank Harris & Co. Bloomsbury and Kings Cross
81 Marchmont Street,
London, WC1N 1AL
020 7405 4444
bloomsburysales@frankharris.co.uk

Energy Rating: C. We aim to make our particulars both accurate and reliable. However they are not guaranteed; nor do they form part of an offer or contract. If you require clarification on any points then please contact us, especially if you're traveling some distance to view. Please note that appliances and heating systems have not been tested and therefore no warranties can be given as to their good working order.

