



pa peter
alan

Fishguard Road, £400,000

- Larger Style Extended Mid Terrace
- Private Rear Garden/Driveway
- Three Large Double Bedrooms
- Three Reception Rooms
- Ground Floor Wet Room
- EPC Rating: D



 3  1  3

pa peter
alan

02920 618552
llanishen@peteralan.co.uk



About the property

A deceptively spacious larger style extended mid terrace family home situated within a short walk to schools, shops and public transport. The property has a recently modernised kitchen, wet room and shower room with three large double bedrooms, off road parking and a private rear garden.

Accommodation

Entrance Hall

Reception One

Reception Two/Conservatory

Reception Three

Modern Fitted Kitchen

Wet Room



Landing

Front Driveway For Two Cars

Bedroom One

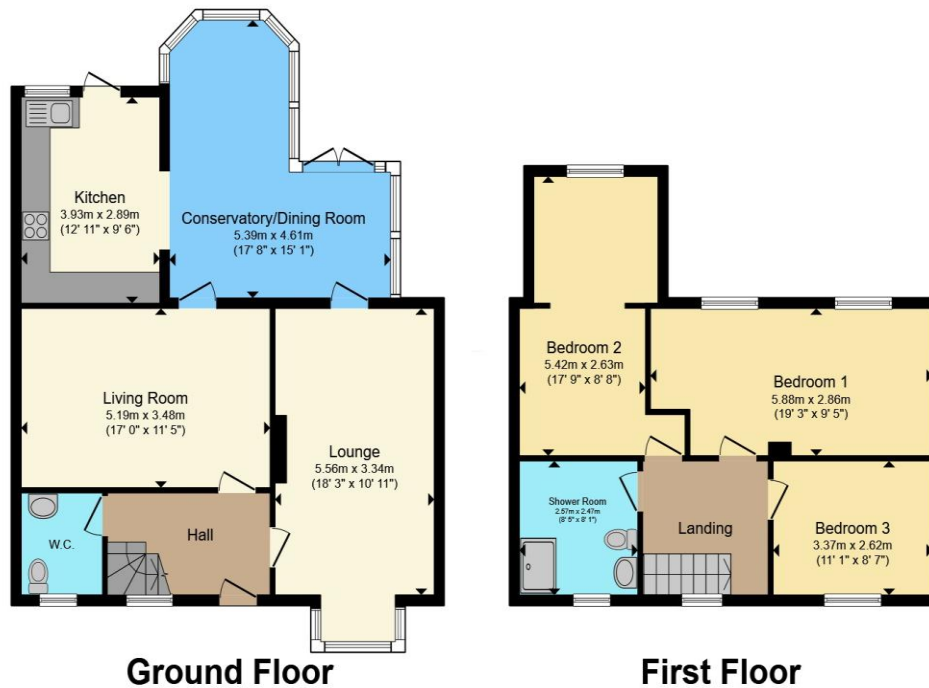
Private Rear Garden

Bedroom Two

Bedroom Three

Shower Room

Floorplan



Total floor area 135.6 m² (1,460 sq.ft.) approx

This floor plan is for illustrative purposes only. It is not drawn to scale. Any measurements, floor areas (including any total floor area), openings and orientation are approximate. No details are guaranteed, they cannot be relied upon for any purpose and they do not form part of any agreement. No liability is taken for any error, omission or misstatement. A party must rely upon its own inspection(s). Powered by www.propertybox.io

Important Information

Note while we endeavour to make our sales details accurate and reliable, if there is any point which is of particular interest to you, please contact the office and we will be pleased to confirm the position for you. We have not personally tested any apparatus, equipment, fixtures, fittings or services and cannot verify they are in working order or fit for their purposes. Nothing in these particulars is intended to indicate that carpets or curtains, furnishings or fittings, electrical goods (whether wired or not). Gas fires or light fittings or any other fixtures not expressly included form part of the property offered for sale. This computer generated Floorplan, if applicable, is intended as a general guide to the layout and design of the property. It is not to scale and should not be relied upon for dimensions. Tenure: We cannot confirm the tenure of the property as we have not had access to the legal documents. The buyer is advised to obtain verification from their solicitor or surveyor.