



Llandough House

£180,000

- COUNCIL TAX BAND - C
- NO CHAIN
- FIRST FLOOR POSITION
- CLOSE TO LOCAL AMMENITIES AND HOSPITAL
- GOOD TRANSPORT LINKS TO PENARTH AND CARDIFF
- GARAGE
- EPC Rating: C



🛏️ 2 🚿 1 🛋️ 1



About the property

A well-presented two-bedroom first floor flat with garage situated in the sought-after area of Llandough, providing excellent access to Penarth, Cardiff City Centre and local amenities.

This bright and spacious property offers comfortable living accommodation throughout, briefly comprising entrance hallway, generous lounge/dining room, fitted kitchen, two well-proportioned bedrooms, and a modern bathroom.

The property benefits from well-maintained communal gardens and a private garage.

Accommodation

Entrance Hall

Welcoming entrance hallway providing access to all rooms, with storage cupboard and space for coats and shoes.

Living Room

16' max x 10' 5" max (4.88m max x 3.17m max)

A bright and spacious reception room with large window allowing plenty of natural light. Ample space for both living and dining furniture, ideal for relaxing or entertaining.

Kitchen/ Diner

12' 1" max x 10' 10" max (3.68m max x 3.30m max)

Fitted kitchen comprising a range of wall and base units with work surfaces over. fitted storage cupboard.

Bedroom One

14' 7" max x 9' 1" max (4.45m max x 2.77m max)



Generous double bedroom with space for wardrobe and additional bedroom furniture. Window to rear aspect.

bedroom Two

10' 11" max x 10' 1" max (3.33m max x 3.07m max)

Good-sized second bedroom, ideal as a guest room, home office or nursery.

Bathroom

Modern suite comprising bath with shower over, wash hand basin and WC. Finished with tiled walls and flooring.

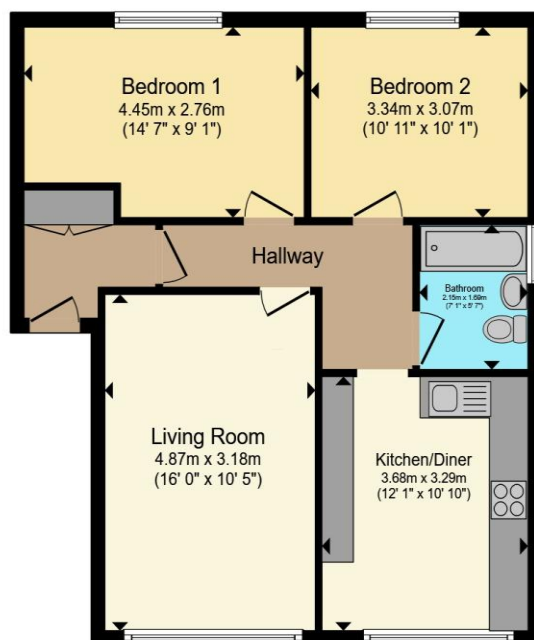
Outside

The property benefits from well-maintained communal gardens and a private garage

02920 703799

penarth@peteralan.co.uk

Floorplan



Ground Floor

Total floor area 62.8 m² (676 sq.ft.) approx

This floor plan is for illustrative purposes only. It is not drawn to scale. Any measurements, floor areas (including any total floor area), openings and orientation are approximate. No details are guaranteed, they cannot be relied upon for any purpose and they do not form part of any agreement. No liability is taken for any error, omission or misstatement. A party must rely upon its own inspection(s). Powered by www.propertybox.io

Important Information

Note while we endeavour to make our sales details accurate and reliable, if there is any point which is of particular interest to you, please contact the office and we will be pleased to confirm the position for you. We have not personally tested any apparatus, equipment, fixtures, fittings or services and cannot verify they are in working order or fit for their purposes. Nothing in these particulars is intended to indicate that carpets or curtains, furnishings or fittings, electrical goods (whether wired or not). Gas fires or light fittings or any other fixtures not expressly included form part of the property offered for sale. This computer generated Floorplan, if applicable, is intended as a general guide to the layout and design of the property. It is not to scale and should not be relied upon for dimensions. Tenure: We cannot confirm the tenure of the property as we have not had access to the legal documents. The buyer is advised to obtain verification from their solicitor or surveyor.

Peter Alan Limited is registered in England and Wales under company number 2073153. Registered Office is Cumbria House, 16-20 Hockliffe Street, Leighton Buzzard, Bedfordshire, LU7 1GN. VAT Registration Number is 500 2481 05. For activities relating to regulated mortgages and non-investment insurance contracts, Peter Alan Limited is an appointed representative of Connells Limited which is authorised and regulated by the Financial Conduct Authority. Connells Limited's Financial Services Register number is 302221. Most buy-to-let