

PHILLIPS & STUBBS



coastal +
COUNTRY



A three-bedroom semi-detached house occupying a sought after position in the heart of Rye Harbour, backing directly onto the internationally renowned Rye Harbour Nature Reserve and enjoying access to miles of coastal walking routes leading towards Winchelsea Beach and beyond to Pett Level.

The house offers bright, well-balanced accommodation arranged over two floors. At its heart is a generous open-plan sitting and dining room which opens through to the fitted kitchen and conservatory beyond. The conservatory opens out to the garden. A cloakroom serves the principal living accommodation.

On the first floor there are three bedrooms and a contemporary shower room, fitted with a large walk-in shower and finished with marble-effect tiling, creating a refined and modern feel.

Outside, the rear garden has been designed for ease of maintenance with an area of lawn, paved terrace and useful shed. Side access to the picket fence enclosed front garden. Off road parking for several cars.

Situation

Rye Harbour is a unique coastal village set within the spectacular landscape of the Rye Harbour Nature Reserve, an area celebrated for its diverse wildlife, open skies and extensive network of footpaths and cycle routes. From the property, walks can be enjoyed across the reserve towards Winchelsea Beach and along the coastline.

The house is at the end of a no-through road within a small development of similar properties. The Ancient Town and Cinque Port of Rye is a short distance away and offers an excellent range of independent shops, galleries, cafés and restaurants, together with rail services connecting to Ashford International and onward high speed connection to London.

Ground floor

The front door opens into an entrance hall with a cloakroom/wc and staircase rising to the first floor. To the front of the house is a generously proportioned sitting room measuring over 15ft in length, providing an excellent principal reception space with ample room for both seating and entertaining.

To the rear, the accommodation flows naturally into a separate dining room. Adjacent is the fitted kitchen, which enjoys a pleasant outlook the rear garden. A conservatory provides an additional reception space with doors opening directly onto the rear garden and terrace.

First floor

The first floor comprises three bedrooms. The principal bedroom is a double room extending to over 13ft in length, whilst the second bedroom is another good-sized double. The third bedroom offers flexibility as bedroom or home office. These are served by a family shower room with w.c and wash hand basin

Outside

Enclosed garden to front and rear, partly paved with lawn and summer house along with parking to front.

Local Authority: Rother District Council. Council Tax Band C

Mains electricity and water. Mains drainage.

Predicted mobile phone coverage: EE, Vodafone, Three and 02

Broadband speed: Ultrafast 1800Mbps available. Source Ofcom

River and Sea Flood risk summary: Very low risk. Source GOV.UK

Price Guide £359,950 Freehold

32 Lucas Shadwell Way, Rye, TN31 7HZ



A three-bedroom semi-detached house occupying a sought after position in the heart of Rye Harbour, backing directly onto the internationally renowned Rye Harbour Nature Reserve and enjoying access to miles of coastal walking routes leading towards Winchelsea Beach and beyond to Pett Level.

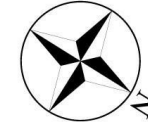
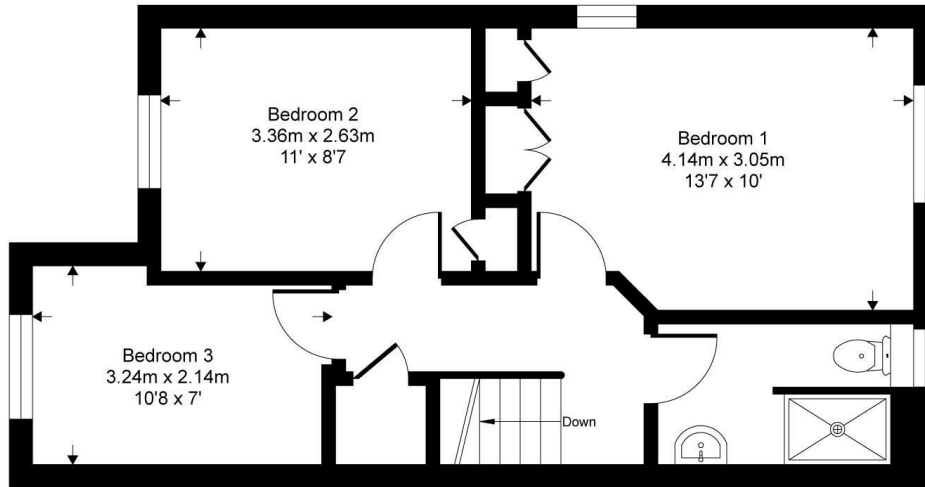
- Living/dining room • Kitchen • Conservatory • Cloakroom • Enclosed rear garden • Off road parking for several cars • Electric heating • Nearby access to Rye Harbour Nature Reserve



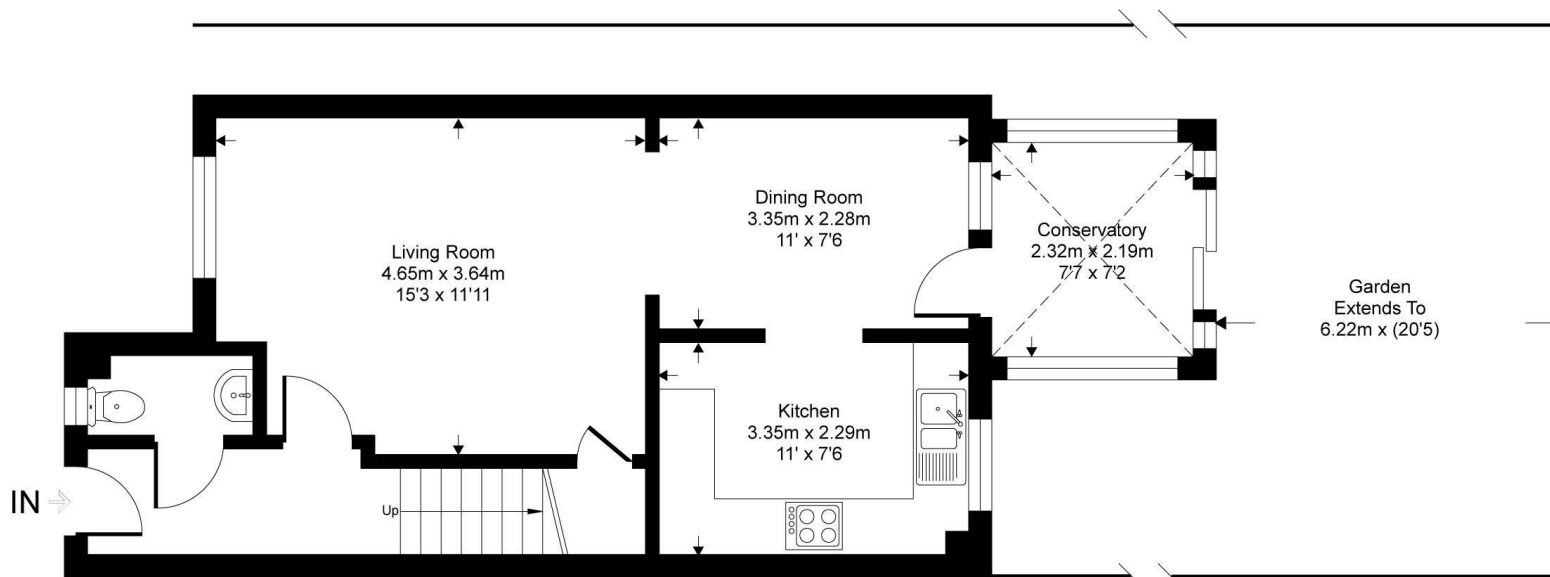
EPC: D
Local Authority: Rother District Council
Council Tax Band: C

Lucas Shadwell Close

Approximate Gross Internal Area = 88.5 sq m / 953 sq ft



First Floor



Ground Floor

This floor plan is for representation purposes only as defined by the RICS code of Measuring Practice (and IPMS where requested) and should be used as such by any prospective purchaser. Whilst every attempt has been made to ensure the accuracy contained here, the measurement of doors, windows and rooms is approximate and no responsibility is taken for any error, omission or mis-statement. Specifically no guarantee is given on the total area of the property if quoted on the plan. Any figure provided is for guidance only and should not be used for valuation purposes.

PHILLIPS & STUBBS



Viewing Arrangements : Strictly by appointment with Phillips & Stubbs

Important Notice:

Phillips & Stubbs, their clients and any joint agents give notice that:

1. They are not authorised to make or give any representations or warranties in relation to the property either here or elsewhere, either on our own behalf or on behalf of their clients or otherwise. They assume no responsibility for any statement that may be made in these particulars. These particulars do not form part of any offer or contract and must not be relied upon as statements or representations of fact.
2. These particulars have been provided in good faith and, whilst we endeavour to make them accurate and reliable, if there are any points of particular importance to you please contact our office and we will make further enquiries on your behalf. Any areas, measurements or distances are approximate. The text, photographs and plans are for guidance only and are not necessarily comprehensive. It should not be assumed that the property has all necessary planning, building regulation or other consents regarding alterations. Phillips and Stubbs have not tested any services, equipment or facilities. Purchasers must satisfy themselves by inspection or otherwise. All contents, fixtures, fittings and electrical appliances are expressly excluded from the sale unless specifically mentioned in the text of the sales particulars. A wide angle lens has been used in the photography.



47-49 Cinque Ports Street, Rye, East Sussex TN31 7AN 01797 227338 rye@phillipsandstubbs.co.uk
Mayfair Office, 41-43 Maddox Street, London W1S 2PD 0207 467 5330 mayfair@phillipsandstubbs.co.uk

www.phillipsandstubbs.co.uk