



Derwent Close, Waterlooille PO8 0DH

welcome to

Derwent Close, Waterloo

This well presented three bedroom detached home is set in a quiet cul-de-sac with lovely views over Clanfield, driveway parking and a garage. Inside offers open plan living, a modern kitchen and bath, plus an attractive rear garden close to amenities.

Entrance Hall

Stairs leading to first floor with under stair storage. Carpet flooring, radiator.

Cloakroom

Double glazed window to front aspect. Low level WC, vanity corner wash hand basin, heated towel rail.

Living / Dining Room

Double glazed sliding doors to rear garden. Double glazed window to rear aspect. Two radiators, carpet flooring, feature fireplace with electric fire, hearth and mantel over, serving hatch through to kitchen.

Kitchen

Double glazed window to front aspect. Range of wall and base units with work surface over incorporating sink unit with mixer tap over. Built-in low level oven and gas hob with extractor hood over. Space for fridge, freezer, washing machine and dishwasher. Wall mounted boiler. Radiator, vinyl flooring, spotlights.

First Floor Landing

Double glazed window to side aspect. Built-in storage cupboard. Access to loft space.

Bedroom One

Double glazed window to rear aspect with amazing views. Built-in wardrobes, carpet flooring, radiator.

En-Suite Shower Room

Vanity wash hand basin and shower cubicle.

Bedroom Two

Double glazed window to front aspect. Carpet flooring, radiator.

Bedroom Three

Double glazed window to front aspect. Built-in wardrobe, carpet flooring, radiator.

Bathroom

Double glazed window to rear aspect. Panel enclosed bath with shower over, low level WC and pedestal wash hand basin. Heated towel rail.

Outside

Front

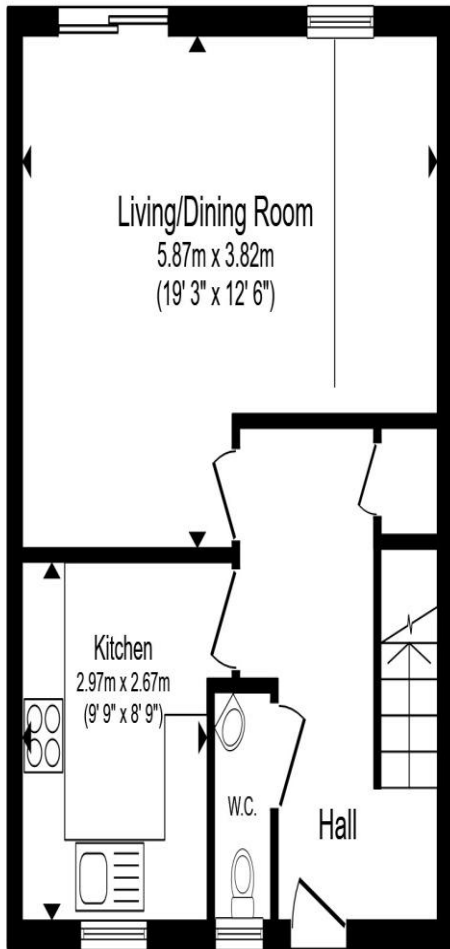
Laid to lawn with mature shrubs. Steps leading up to front door. Driveway, providing off road parking, leading to garage.

Garage

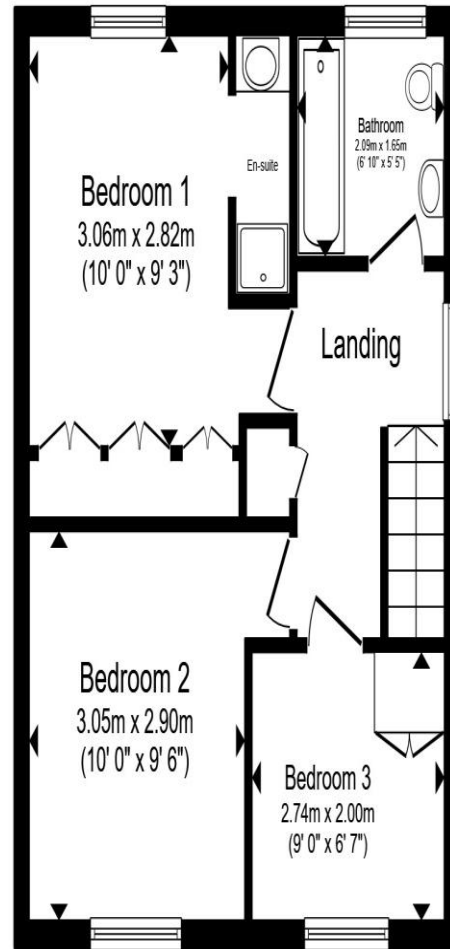
Up and over door.

Rear Garden

Tiered garden with patio and steps down to lawn with decking and mature shrubs.



Ground Floor



First Floor

Total floor area 77.4 m² (833 sq.ft.) approx

This floor plan is for illustrative purposes only. It is not drawn to scale. Any measurements, floor areas (including any total floor area), openings and orientation are approximate. No details are guaranteed, they cannot be relied upon for any purpose and they do not form part of any agreement. No liability is taken for any error, omission or misstatement. A party must rely upon its own inspection(s). Powered by www.propertybox.io



welcome to
Derwent Close,
Waterlooville

- Quiet Cul-de-Sac Location
- Views over Clanfield
- Driveway & Garage
- Open Plan Living
- Attractive Rear Garden

Tenure: Freehold EPC Rating: C
Council Tax Band: D

£390,000



view this property online fox-and-sons.co.uk/Property/WLV109714



Property Ref:
WLV109714 - 0004

1. MONEY LAUNDERING REGULATIONS Intending purchasers will be asked to produce identification documentation at a later stage and we would ask for your co-operation in order that there is no delay in agreeing the sale. 2. These particulars do not constitute part or all of an offer or contract. 3. The measurements indicated are supplied for guidance only and as such must be considered incorrect. Potential buyers are advised to recheck measurements before committing to any expense. 4. We have not tested any apparatus, equipment, fixtures or services and it is in the buyers interest to check the working condition of any appliances. 5. Where an EPC, or a Home Report (Scotland only) is held for this property, it is available for inspection at the branch by appointment. If you require a printed version of a Home Report, you will need to pay a reasonable production charge reflecting printing and other costs. 6. We are not able to offer an opinion either written or verbal on the content of these reports and this must be obtained from your legal representative. 7. Whilst we take care in preparing these reports, a buyer should ensure that his/her legal representative confirms as soon as possible all matters relating to title including the extent and boundaries of the property and other important matters before exchange of contracts.

Fox & Sons is a trading name of Sequence (UK) Limited which is registered in England and Wales under company number 4268443, Registered Office is Cumbria House, 16-20 Hockliffe Street, Leighton Buzzard, Bedfordshire, LU7 1GN. VAT Registration Number is 500 2481 05.

fox & sons



023 9226 2447



Waterlooville@fox-and-sons.co.uk



81B London Road, WATERLOOVILLE,
Hampshire, PO7 7ES



fox-and-sons.co.uk