



## Harlesden Gardens, NW10

£2,900 Per Month

AVAILABLE NOW TO LET – A stunning three-bedroom ground-floor garden flat, recently refurbished and thoughtfully designed throughout. Offering 896 sq ft of bright, well-planned accommodation, the property features an open-plan kitchen/reception room with direct access to the garden, three double bedrooms, and two modern bathrooms, including an en-suite to the principal bedroom. Ideally situated on the tree-lined Harlesden Gardens, within easy reach of local amenities, Roundwood Park, and excellent transport links via Willesden Junction and Harlesden stations.

- Spacious 3 bedroom Garden Flat
- Offering 896 sq ft of accommodation
- Private rear garden
- Open plan kitchen/reception leading to bright patio
- Within walking distance of local amenities and transport
- Deposit: £3,230. COUNCIL: Brent (C)

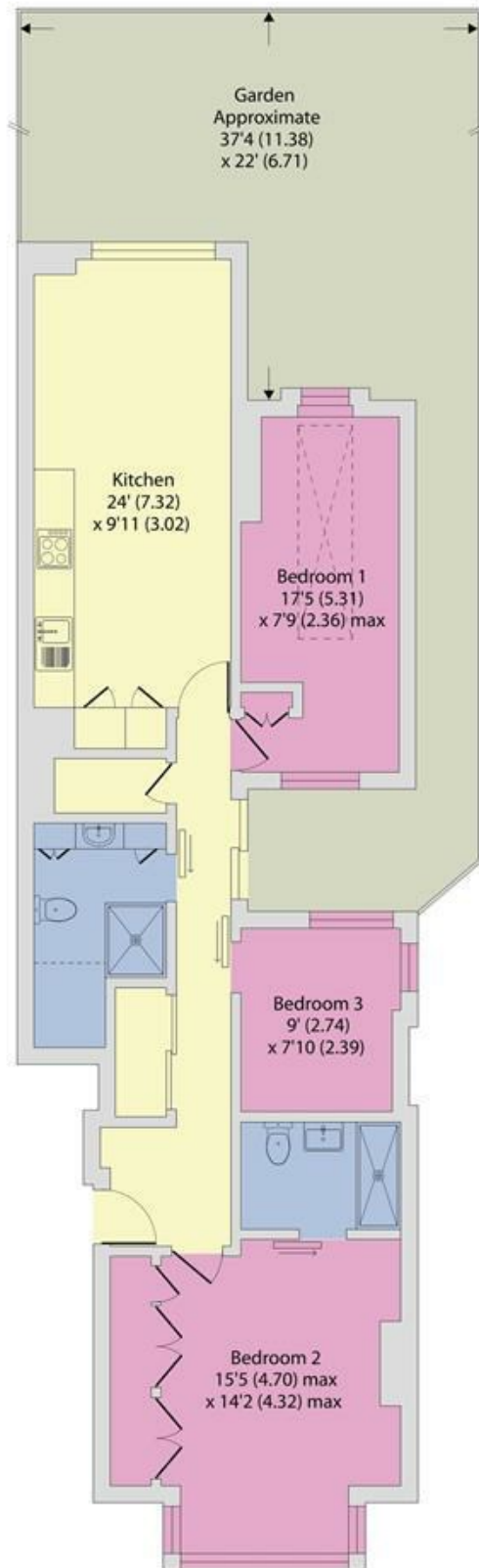


020 8450 9377 - 020 8459 1133  
rentals@cameronsstiff.co.uk

## Harlesden Gardens, London, NW10

Approximate Area = 896 sq ft / 83 sq m

For identification only - Not to scale



**GROUND FLOOR**

EPC: E

Ref: 15389961



Floor plan produced in accordance with RICS Property Measurement 2nd Edition, Incorporating International Property Measurement Standards (IPMS2 Residential). © nichecom 2025. Produced for Camerons Stiff & Co. REF: 623549

