



Weaver Close, Ipswich, IP1 5RB

welcome to

Weaver Close, Ipswich

This well-presented, end-terraced home benefits from three bedrooms, an open plan lounge, a kitchen/diner with doors to the rear garden, a ground floor cloakroom, a 1st floor bathroom, a corner plot rear garden and ample residents parking.

Entrance Hall

Oak effect flooring, one radiator and a storage cupboard.

Cloakroom

Low level WC, vanity sink and double glazed window to the front.

Lounge

Double glazed window to the front, TV point and an opening to the kitchen/diner.

Kitchen/Diner

Modern, spacious kitchen/diner with an opening to the lounge, patio doors to the garden, double glazed window to the rear, tiled flooring, one radiator, eye and base level units in grey with grey stone effect worktop surfaces, a stainless steel sink plus drainer and chrome mixer tap, an integrated oven with gas hob and extractor hood, tiled splashback, space for a fridge/freezer, washing machine and tumble dryer.

First Floor Landing

An airing cupboard, carpet flooring and loft hatch.

Master Bedroom

Double glazed window to the front, carpet flooring, one radiator and a full wall of fitted, sliding wardrobes.

Bedroom Two

Double glazed window to the rear, carpet flooring and one radiator.

Bedroom Three

Double glazed window to the front, carpet flooring, a storage cupboard over the stairs and one radiator.

Bathroom

Low level WC, vanity sink, a bath with overhead shower and glass screen, fully tiled walls, double glazed window to the rear, chrome heated towel rail, spotlights and extractor fan.

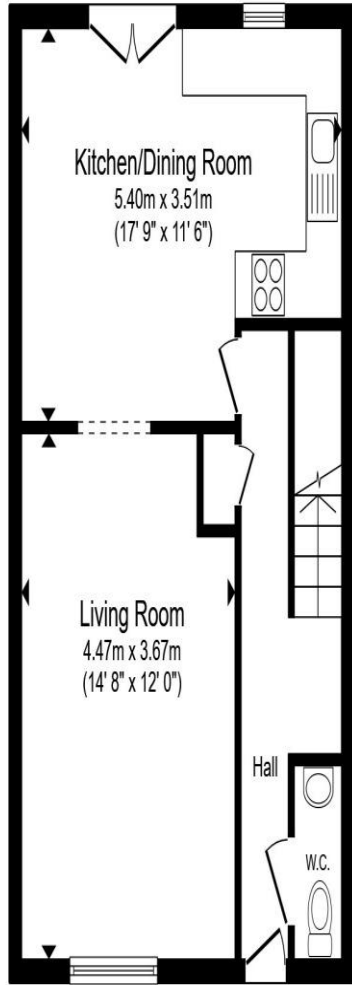
Outside:

Front Garden

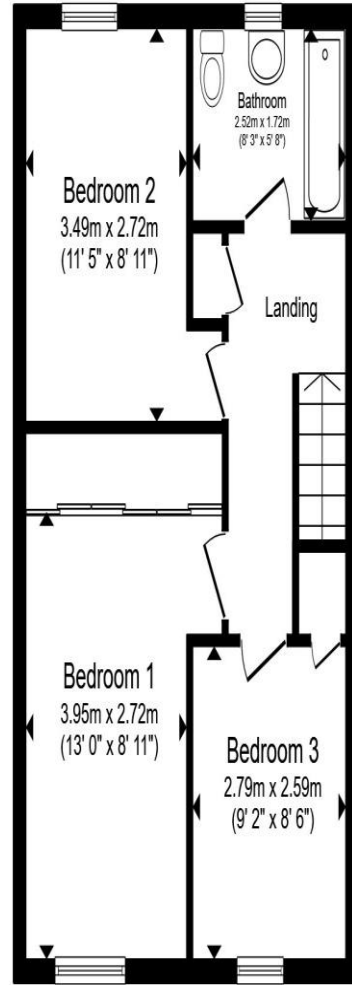
A paved frontage with railings, a gate for access and a dropped kerb to the side.

Rear Garden

Corner plot rear garden with a patio seating area, a grassed area, a raised decking area, a shed to the side, raised planters and a fully enclosed border.



Ground Floor



First Floor

Total floor area 89.7 m² (965 sq.ft.) approx

This floor plan is for illustrative purposes only. It is not drawn to scale. Any measurements, floor areas (including any total floor area), openings and orientation are approximate. No details are guaranteed, they cannot be relied upon for any purpose and they do not form part of any agreement. No liability is taken for any error, omission or misstatement. A party must rely upon its own inspection(s). Powered by www.propertybox.io



welcome to
Weaver Close,
Ipswich

- Three bedrooms
- Modern kitchen
- Ground floor cloakroom & 1st floor bathroom
- Kitchen/diner with doors to the rear garden
- Ample residents parking

Tenure: Freehold EPC Rating: C
Council Tax Band: B

offers over
£225,000



view this property online williamhbrown.co.uk/Property/IPS121609



Property Ref:
IPS121609 - 0002

1. MONEY LAUNDERING REGULATIONS Intending purchasers will be asked to produce identification documentation at a later stage and we would ask for your co-operation in order that there is no delay in agreeing the sale. 2. These particulars do not constitute part or all of an offer or contract. 3. The measurements indicated are supplied for guidance only and as such must be considered incorrect. Potential buyers are advised to recheck measurements before committing to any expense. 4. We have not tested any apparatus, equipment, fixtures or services and it is in the buyers interest to check the working condition of any appliances. 5. Where an EPC, or a Home Report (Scotland only) is held for this property, it is available for inspection at the branch by appointment. If you require a printed version of a Home Report, you will need to pay a reasonable production charge reflecting printing and other costs. 6. We are not able to offer an opinion either written or verbal on the content of these reports and this must be obtained from your legal representative. 7. Whilst we take care in preparing these reports, a buyer should ensure that his/her legal representative confirms as soon as possible all matters relating to title including the extent and boundaries of the property and other important matters before exchange of contracts.

William H Brown is a trading name of Sequence (UK) Limited which is registered in England and Wales under company number 4268443, Registered Office is Cumbria House, 16-20 Hockliffe Street, Leighton Buzzard, Bedfordshire, LU7 1GN. VAT Registration Number is 500 2481 05.



william h brown



01473 226101



ipswich@williamhbrown.co.uk



16-18 Wolsey House, Princes Street, IPSWICH,
Suffolk, IP1 1QT



williamhbrown.co.uk