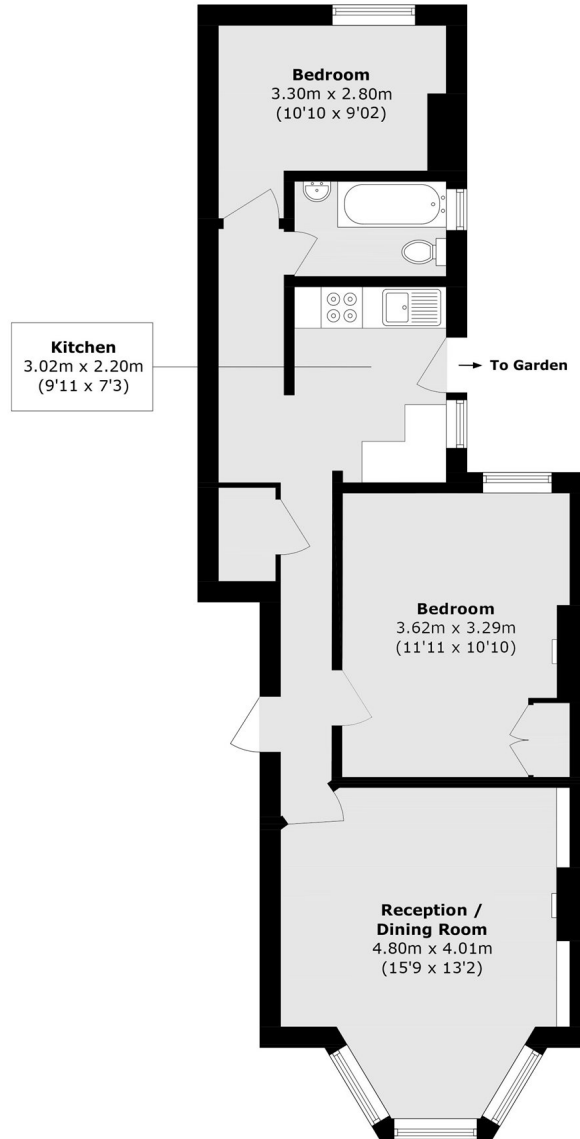




Newton Avenue, W3

£499,950

A two bedroom period conversion garden flat on the borders of Chiswick and moments from South Acton Park. The property has a private west facing garden, a share of the freehold and is offered with no onward chain. Newton Avenue is within half a mile of both South Acton and Acton Town stations offering excellent access into town. The shops and amenities of Chiswick High Road and Turnham Green Terrace are also within a mile of the property.



Total area (approx.): 58.7 sq. m (631.8 sq. ft)

Robertson Smith & Kempson Acton Sales
137 High Street, Acton,
London, W3 6LY
020 8896 3996
actonsales@robertsonsmithandkempson.co.uk

Energy Rating: D. We aim to make our particulars both accurate and reliable. However they are not guaranteed; nor do they form part of an offer or contract. If you require clarification on any points then please contact us, especially if you're traveling some distance to view. Please note that appliances and heating systems have not been tested and therefore no warranties can be given as to their good working order.