

Althorpe Drive, Loughborough

welcome to

Althorpe Drive, Loughborough

Four-bedroom family home featuring a conservatory, ground floor WC, modern kitchen, private garden, and driveway parking in a popular residential location.

Entrance

Entrance to the property is via a upvc double glazed door into the entrance hallway. The entrance hallway has parquet flooring, a radiator, doors to all ground floor rooms and stairs rising to the first floor.

Lounge

11' 6" x 11' 6" (3.51m x 3.51m)

The lounge has a large upvc double glazed front-facing window, carpeted flooring, a radiator and leads through to the dining area.

Dining Room

18' x 13' 1" (5.49m x 3.99m)

The dining room has a door leading to the kitchen, laminate flooring, under stairs storage and UPVC French doors opening to the conservatory.

Kitchen

13' 1" x 8' 8" (3.99m x 2.64m)

The kitchen is fitted with a range of base and wall mounted units, space and plumbing for a washing machine, ceiling spotlights, gas cooker, dishwasher, tiled flooring, tiled splashbacks and a UPVC double glazed window to the rear and a upvc double glazed door to the side.

Conservatory

11' 11" x 9' 9" (3.63m x 2.97m)

The conservatory has upvc double glazing throughout, laminate flooring, electric wall heater and upvc French doors leading to the rear garden.

Ground Floor Wc

The ground floor wc has a low level wc, pedestal hand wash basin, vinyl flooring, a radiator and a small upvc double glazed window to the front elevation.

First Floor Landing

The first-floor landing has stairs rising from the ground floor, carpeted flooring and doors to all first-floor rooms.

Bedroom One

11' 5" x 8' 7" (3.48m x 2.62m)

Bedroom one has carpeted flooring, a radiator and a upvc double glazed window to the rear elevation.

Bedroom Two

12' x 10' (3.66m x 3.05m)

Bedroom two has carpeted flooring, a radiator and a upvc double glazed window to the rear elevation.

Bedroom Three

9' 9" x 6' 10" (2.97m x 2.08m)

Bedroom three has carpeted flooring, a radiator and a upvc double glazed window to the front elevation.

Bedroom Four

8' x 6' 8" (2.44m x 2.03m)

Bedroom four has carpeted flooring, a radiator and a upvc double glazed window to the front elevation.





Bathroom

The bathroom is fitted with a three-piece suite comprising of panelled bath with shower over, low level wc and hand wash basin. The bathroom has tiled walls, tiled flooring, storage cupboard and a upvc double glazed window to the side elevation.

Outside

To the front of the property there is a driveway providing off road parking and access to a single garage and a side gate providing access to the rear garden. To the rear of the property there is a patio seating area and steps to a lawned area with flower borders, shrubs and fenced to all boundaries.



view this property online williamhbrown.co.uk/Property/LBH115917



welcome to

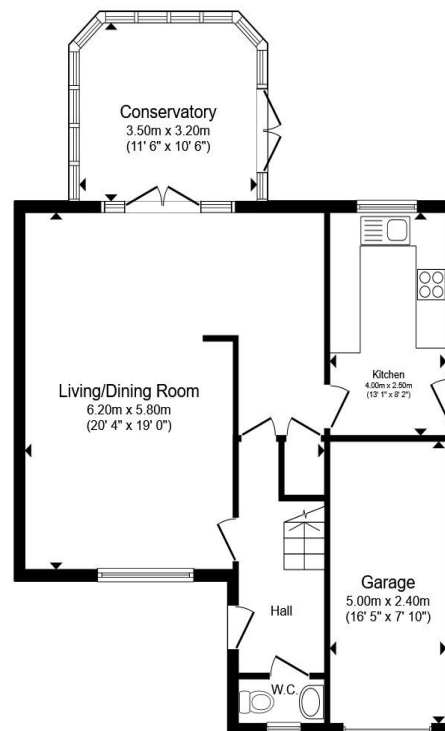
Althorpe Drive, Loughborough

- Detached Property
- Four Well-proportioned Bedrooms
- Ground Floor WC
- Conservatory overlooking the rear garden
- Close to local amenities and transport links

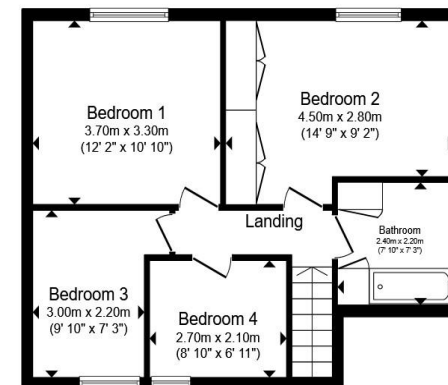
Tenure: Freehold EPC Rating: D

Council Tax Band: D

£330,000



Ground Floor



First Floor

Total floor area 126.1 m² (1,357 sq.ft.) approx

This floor plan is for illustrative purposes only. It is not drawn to scale. Any measurements, floor areas (including any total floor area), openings and orientation are approximate. No details are guaranteed, they cannot be relied upon for any purpose and they do not form part of any agreement. No liability is taken for any error, omission or misstatement. A party must rely upon its own inspection(s). Powered by www.propertybox.io



view this property online williamhbrown.co.uk/Property/LBH115917



Property Ref:
LBH115917 - 0003

1. MONEY LAUNDERING REGULATIONS Intending purchasers will be asked to produce identification documentation at a later stage and we would ask for your co-operation in order that there is no delay in agreeing the sale. 2. These particulars do not constitute part or all of an offer or contract. 3. The measurements indicated are supplied for guidance only and as such must be considered incorrect. Potential buyers are advised to recheck measurements before committing to any expense. 4. We have not tested any apparatus, equipment, fixtures or services and it is in the buyers interest to check the working condition of any appliances. 5. Where an EPC, or a Home Report (Scotland only) is held for this property, it is available for inspection at the branch by appointment. If you require a printed version of a Home Report, you will need to pay a reasonable production charge reflecting printing and other costs. 6. We are not able to offer an opinion either written or verbal on the content of these reports and this must be obtained from your legal representative. 7. Whilst we take care in preparing these reports, a buyer should ensure that his/her legal representative confirms as soon as possible all matters relating to title including the extent and boundaries of the property and other important matters before exchange of contracts.

William H Brown is a trading name of Sequence (UK) Limited which is registered in England and Wales under company number 4268443, Registered Office is Cumbria House, 16-20 Hockliffe Street, Leighton Buzzard, Bedfordshire, LU7 1GN. VAT Registration Number is 500 2481 05.

william h brown



01509 214686



loughborough@williamhbrown.co.uk



22-23 Swan Street, LOUGHBOROUGH,
Leicestershire, LE11 5BL



williamhbrown.co.uk