



## Princes Gardens, W3

£4,000 pw (£4000 pcm)

This beautifully presented four bedroom semi detached home is situated on one of West Acton's most sought after tree lined residential roads. Ideally located within easy reach of the local Japanese School and West Acton Primary School, the property is perfectly suited to families or professional sharers.

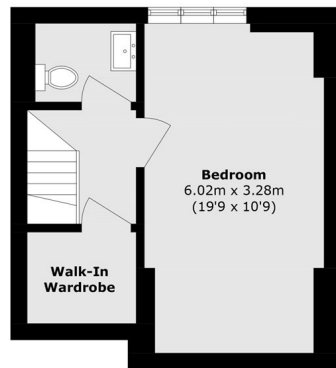


The ground floor features a spacious reception room and a modern open plan kitchen, creating an ideal space for both everyday living and entertaining. The first floor comprises two generous double bedrooms, a single bedroom and a family bathroom. The property further benefits from a spacious fourth bedroom on the top floor, complete with its own en-suite bathroom.

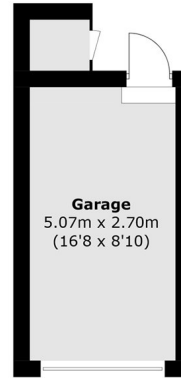
Princes Gardens is less than half a mile from both West Acton (Central line) and North Ealing (Piccadilly line) stations.

- Four Bedroom • West Acton • Newly Refurbished •
  - Private Garden • Wooden Flooring • Garage •
-

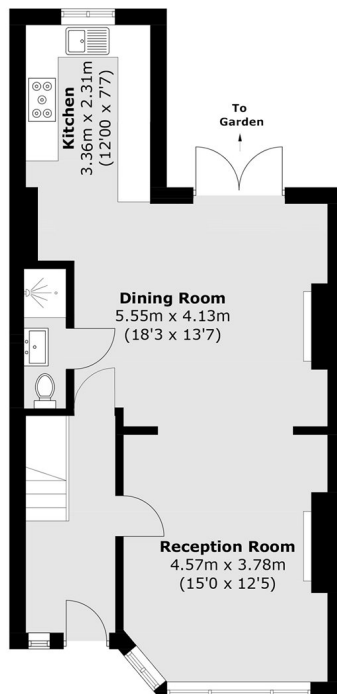




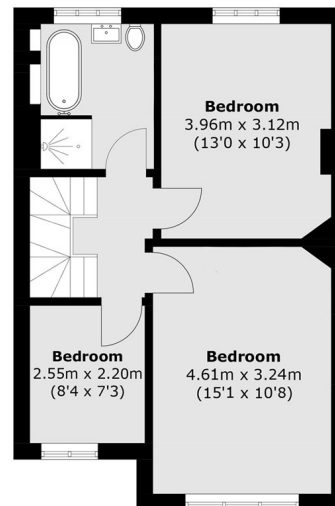
**Second Floor**



**Ground Floor**



**Ground Floor**



**First Floor**

Total area (approx.): 130.0 sq. m (1,399.3 sq. ft)  
 Garage & External Cupboard (approx.): 14.9 sq. m (160.4 sq. ft)

Robertson Smith & Kempson Acton  
 137 High Street, Acton,  
 London, W3 6LY  
 020 8896 3967  
[actonlettings@robertsonsmithandkempson.co.uk](mailto:actonlettings@robertsonsmithandkempson.co.uk)

Energy Rating: . We aim to make our particulars both accurate and reliable. However they are not guaranteed; nor do they form part of an offer or contract. If you require clarification on any points then please contact us, especially if you're traveling some distance to view. Please note that appliances and heating systems have not been tested and therefore no warranties can be given as to their good working order.