

# SNELLERS

ESTATE AGENTS



## Rowlls Road, KT1

£435,000

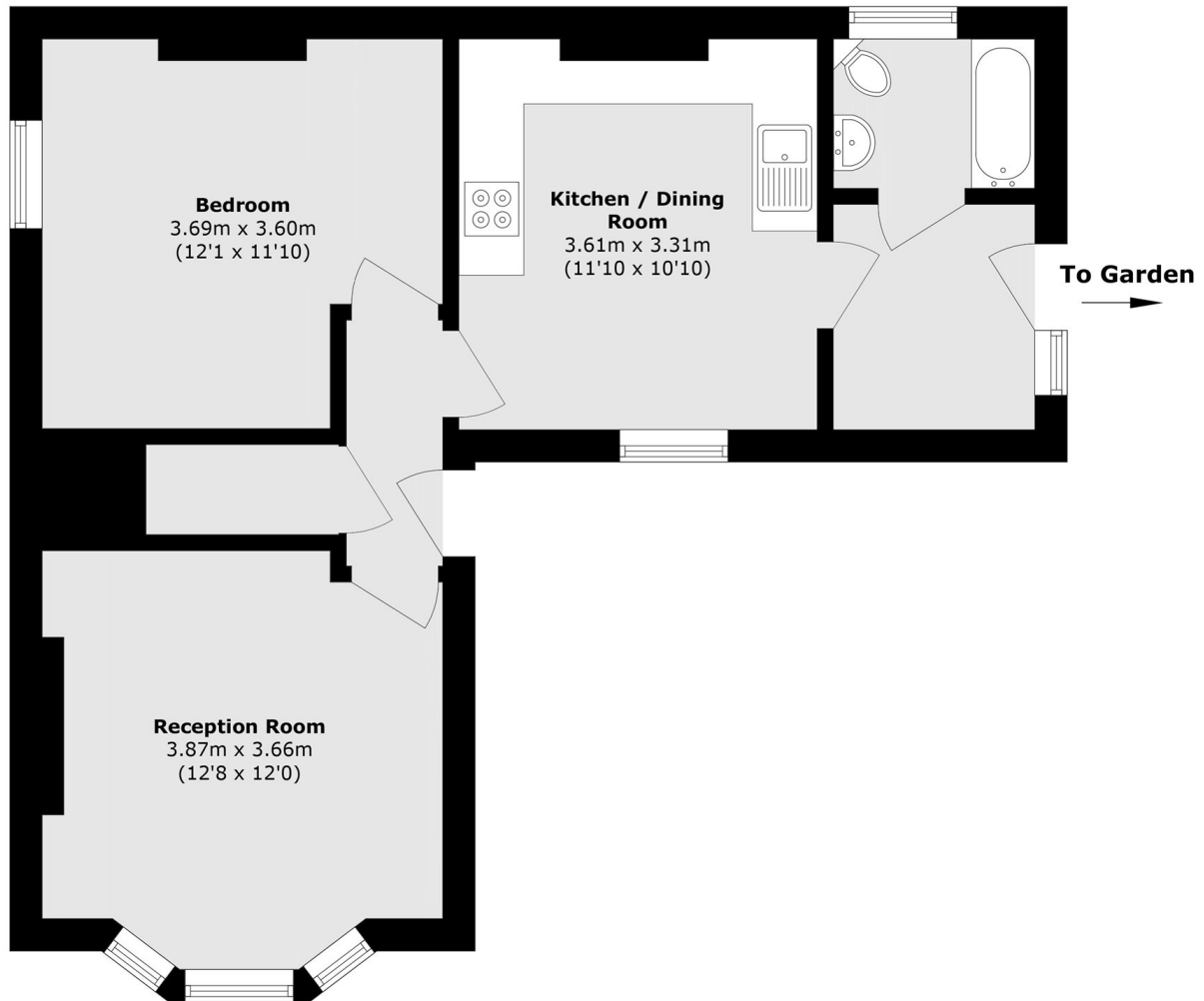
Offered with no onward chain is this spacious apartment situated on the ground floor of this detached Victorian building and it benefits from having one double bedroom, two private gardens, the freehold and the potential to extend and create a second bedroom if required.

Rowlls Road is a popular, quiet and family orientated residential road, close to the Fairfield Recreation Ground and within half a mile of Kingston town centre. Norbiton, Surbiton and Kingston railway stations are also both very close by, providing an ideal opportunity for those wanting to commute into London.

- No Onward Chain • Ground Floor • Comes With The Freehold •
- Two Private Gardens • Potential To Extend • Quiet Location •

# SNELLERS

ESTATE AGENTS



Total area (approx.): 50.6 sq. m (544.6 sq. ft)

Snellers Kingston Sales  
17-21 Richmond Road  
Kingston  
KT2 5BW  
020 8546 8715  
kingstonsales@snellers.co.uk

Energy Rating: D We aim to make our particulars both accurate and reliable. However they are not guaranteed; nor do they form part of an offer or contract. If you require clarification on any points then please contact us, especially if you're traveling some distance to view. Please note that appliances and heating systems have not been tested and therefore no warranties can be given as to their good working order