



**WELLINGTON CLOSE WALTON-ON-THAMES.**  
**£1,500 PER MONTH** AVAILABLE 31/07/2026

**Hamptons**

THE HOME EXPERTS

# { THE PARTICULARS

Wellington Close  
Walton-on-Thames. KT12

£1,500 Per Month  
Furnished

 2 Bedrooms  
 1 Bathroom  
 1 Reception

## Features

- Two Bedrooms, - Lift Access, - Communal Garden, - Off Street Parking, - Furnished, - Council Tax Band C

## Council Tax

Council Tax Band C

Hamptons  
26 High Street  
Weybridge, KT13 8AB  
01932639001  
WeybridgeLettings@hamptons.co.uk  
www.hamptons.co.uk

# { A TWO BEDROOM FURNISHED APARTMENT SITUATED IN A CENTRAL LOCATION IN THE HEART OF WALTON ON THAMES.

## The Property

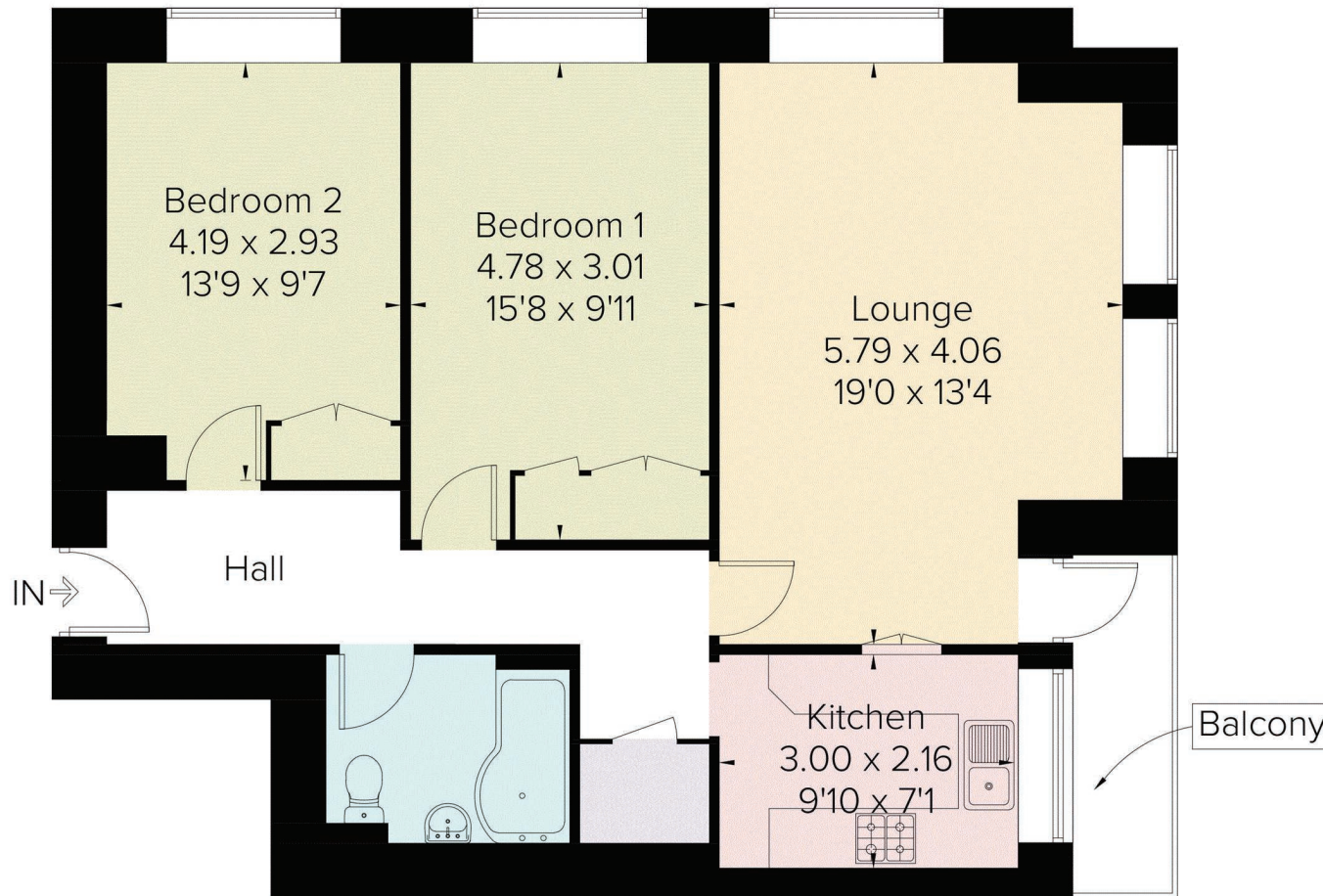
A two bedroom furnished apartment situated in a central location in the heart of Walton on Thames. This well presented apartment offers spacious accommodation to include reception room, kitchen, two double bedrooms, family bathroom, lift, parking and communal gardens.

## Location

Wellington Close is located in the centre of Walton on Thames which offers many shops and restaurants including Al Fresco style dining. The mainline station at Walton on Thames is within one mile and offers access to London Waterloo within 25 minutes whilst the A3 is within just over four miles for London and major airports via the M25. The area has a superb range of leisure facilities including numerous golf, tennis and health clubs and renowned schools.



Approximate Area = 76.6 sq m / 824 sq ft  
Including Limited Use Area (4.0 sq m / 43 sq ft)



## Fourth Floor

Surveyed and drawn in accordance with the International Property Measurement Standards (IPMS 2: Residential)  
fourwalls-group.com 232883

### For Clarification

We wish to inform prospective tenants that we have prepared these particulars as a general guide and they have been confirmed as accurate by the landlord. We have not verified permissions, nor carried out a survey, tested the services, appliances and specific fittings. Room sizes are approximate and measurement figures rounded: they are taken between internal wall surfaces and therefore include cupboards/shelves, etc. Accordingly, they should not be relied upon for

carpets and furnishings. It should also be noted that all fixtures and fittings, carpeted, curtains/blinds, kitchen equipment and garden statuary, whether fitted or not, are deemed removable by the landlord unless specifically itemised with these particulars. Please enquire in office or on our website for details on holding deposit and tenancy deposit figures.

