



Westbourne Road, Ipswich, IP1 5EW

welcome to

Westbourne Road, Ipswich

This attractive, bay fronted, end-terraced home benefits from three good-sized bedrooms, an open plan lounge/diner, a 1st floor shower room, a large, landscaped rear garden, off street parking and a COMPLETE ONWARD CHAIN!!

Entrance Porch

A door to the hall.

Entrance Hall

Wood effect flooring, one radiator and staircase to the first floor.

Lounge/Diner

Stunning, open plan lounge/diner, flooded with light, with double glazed bay window to the front, a further double glazed window to the rear, wood effect flooring throughout, two radiators, TV point and an understairs storage cupboard.

Kitchen

Patio doors leading to the rear garden, eye and base level units in wood with wood effect worktop surfaces, a stainless steel sink plus drainer and chrome mixer tap, tiled splashback, space for all appliances, tiled effect flooring and a double glazed window to the side.

First Floor Landing

Carpet flooring, an airing cupboard and loft hatch.

Master Bedroom

Double glazed window to the front, a further double glazed bay window to the front, carpet flooring and one radiator.

Bedroom Two

Double glazed window to the rear, carpet flooring and one radiator.

Bedroom Three

Double glazed window to the rear, carpet flooring and one radiator.

Shower Room

A shower with glass enclosure and waterfall showerhead, enclosed WC, vanity sink, tiled effect flooring, fully tiled walls, chrome heated towel rail and double glazed window to the side.

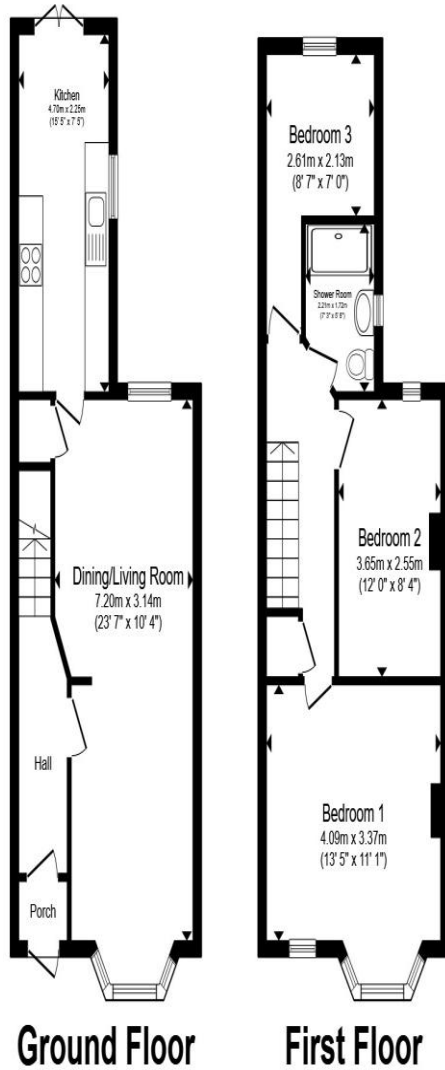
Outside:

Front Garden

A driveway providing off street parking for one large vehicle.

Rear Garden

Beautifully landscaped rear garden with a large block paved seating area, a pathway leading to the rear of the garden, a hard standing seating area to the rear, a side access and a fully enclosed border.



Total floor area 86.8 m² (934 sq.ft.) approx

This floor plan is for illustrative purposes only. It is not drawn to scale. Any measurements, floor areas (including any total floor area), openings and orientation are approximate. No details are guaranteed, they cannot be relied upon for any purpose and they do not form part of any agreement. No liability is taken for any error, omission or misstatement. A party must rely upon its own inspection(s). Powered by www.propertybox.io



welcome to
Westbourne Road,
Ipswich

- Complete onward chain
- Three good-sized bedrooms
- Open plan lounge/diner
- Large landscaped rear garden
- Off street parking

Tenure: Freehold EPC Rating: D
Council Tax Band: B

£230,000



view this property online williamhbrown.co.uk/Property/IPS121601



Property Ref:
IPS121601 - 0002

1. MONEY LAUNDERING REGULATIONS Intending purchasers will be asked to produce identification documentation at a later stage and we would ask for your co-operation in order that there is no delay in agreeing the sale. 2. These particulars do not constitute part or all of an offer or contract. 3. The measurements indicated are supplied for guidance only and as such must be considered incorrect. Potential buyers are advised to recheck measurements before committing to any expense. 4. We have not tested any apparatus, equipment, fixtures or services and it is in the buyers interest to check the working condition of any appliances. 5. Where an EPC, or a Home Report (Scotland only) is held for this property, it is available for inspection at the branch by appointment. If you require a printed version of a Home Report, you will need to pay a reasonable production charge reflecting printing and other costs. 6. We are not able to offer an opinion either written or verbal on the content of these reports and this must be obtained from your legal representative. 7. Whilst we take care in preparing these reports, a buyer should ensure that his/her legal representative confirms as soon as possible all matters relating to title including the extent and boundaries of the property and other important matters before exchange of contracts.

William H Brown is a trading name of Sequence (UK) Limited which is registered in England and Wales under company number 4268443, Registered Office is Cumbria House, 16-20 Hockliffe Street, Leighton Buzzard, Bedfordshire, LU7 1GN. VAT Registration Number is 500 2481 05.



william h brown



01473 226101



ipswich@williamhbrown.co.uk



16-18 Wolsey House, Princes Street, IPSWICH,
Suffolk, IP1 1QT



williamhbrown.co.uk