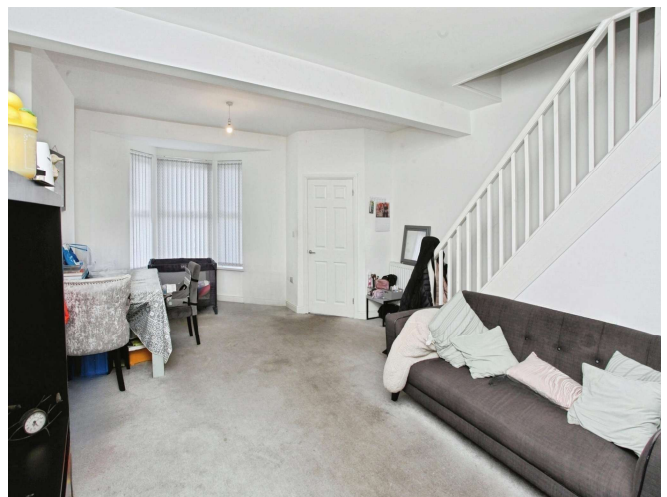




Van Road, ##Invalid offers over £230,000

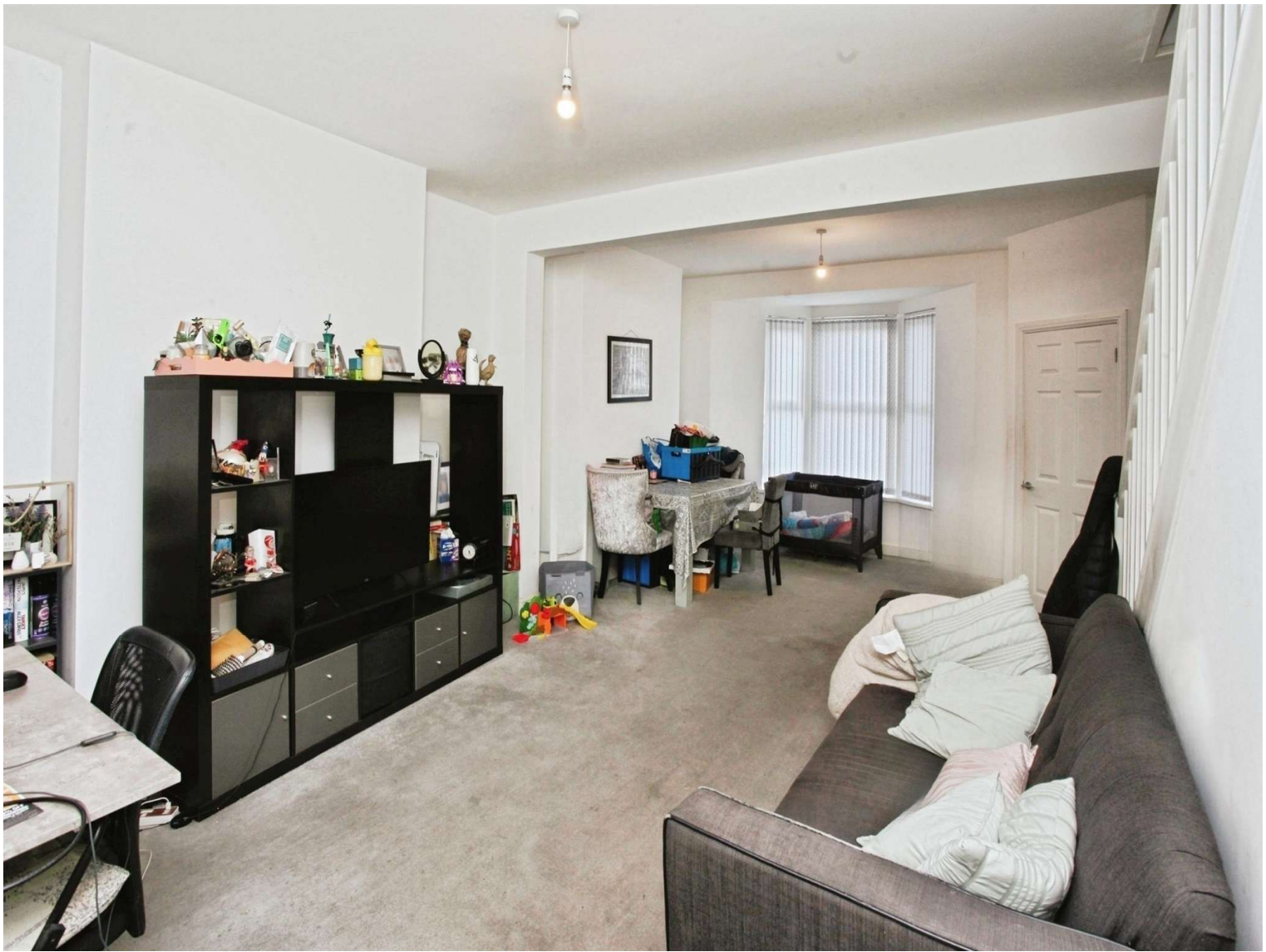
- Three Bedrooms
- Terraced Home
- Great Location
- Close to Town Centre
- Close to amenities
- Garage to the rear
- Front and rear gardens
- Downstairs Wc and Upstairs Bathroom
- EPC Rating: D



 3  1  1

 peter
alan

02920 867611
caerphilly@peteralan.co.uk



About the property

Located on the popular Van Road in Caerphilly, this three-bedroom mid-terrace home offers comfortable living in a great location. Ideal for first-time buyers, families, or anyone looking for a well-connected home, the property is within walking distance of Caerphilly town centre and close to a wide range of local amenities, including shops, schools, cafes, and transport links.

Inside, the home offers a practical layout with a good-sized living area, a functional kitchen, and three well-proportioned bedrooms. There is also a family bathroom and some outdoor space to enjoy at the rear of the property.

With everything you need close by and excellent access to local services, this is a fantastic opportunity to own a home in one of Caerphilly's most convenient locations.

Accommodation

Ground Floor

Hall

Living Room/Dining Room 21' 3" max x 15' 7" max (6.48m max x 4.75m max)

Kitchen 11' 2" x 9' 5" (3.40m x 2.87m)

Utility Room 9' 5" max x 9' 1" max (2.87m max x 2.77m max)

Wc

First Floor

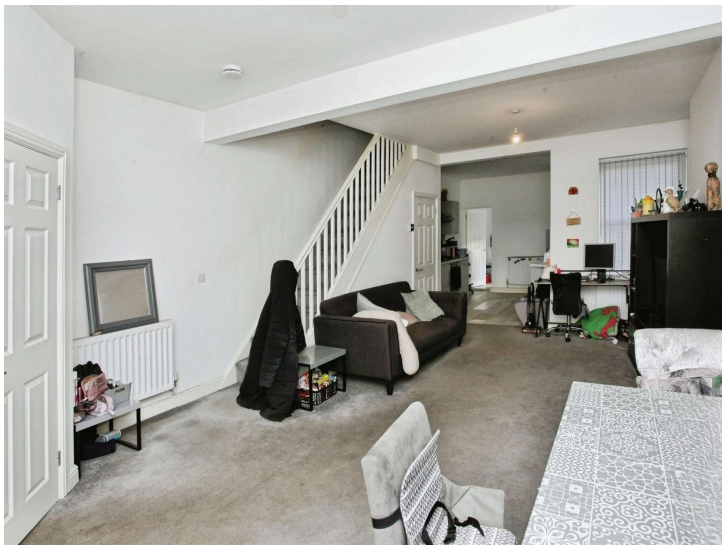
Landing

Bedroom One 11' 8" x 9' 5" (3.56m x 2.87m)

Bedroom Two 9' 5" max x 9' 5" max (2.87m max x 2.87m max)

Garage

Single Garage at the rear of the garden



Floorplan



This floor plan is for illustrative purposes only. It is not drawn to scale. Any measurements, floor areas (including any total floor area), openings and orientation are approximate. No details are guaranteed, they cannot be relied upon for any purpose and they do not form part of any agreement. No liability is taken for any error, omission or misstatement. A party must rely upon its own inspection(s). Powered by www.focalagent.com

Important Information

Note while we endeavour to make our sales details accurate and reliable, if there is any point which is of particular interest to you, please contact the office and we will be pleased to confirm the position for you. We have not personally tested any apparatus, equipment, fixtures, fittings or services and cannot verify they are in working order or fit for their purposes. Nothing in these particulars is intended to indicate that carpets or curtains, furnishings or fittings, electrical goods (whether wired or not). Gas fires or light fittings or any other fixtures not expressly included form part of the property offered for sale. This computer generated Floorplan, if applicable, is intended as a general guide to the layout and design of the property. It is not to scale and should not be relied upon for dimensions. Tenure: We cannot confirm the tenure of the property as we have not had access to the legal documents. The buyer is advised to obtain verification from their solicitor or surveyor.

Peter Alan Limited is registered in England and Wales under company number 2073153, Registered Office is Cumbria House, 16-20 Hockliffe Street, Leighton Buzzard, Bedfordshire, LU7 1GN. VAT Registration Number is 500 2481 05. For activities relating to regulated mortgages and non-investment insurance contracts, Peter Alan Limited is an appointed representative of Connells Limited which is authorised and regulated by the Financial Conduct Authority. Connells Limited's Financial Services Register number is 302221. Most buy-to-let