



Gayford Road W12

**FINLAY
BREWER**

Gayford Road W12

**4/5 Bedrooms * Reception
Kitchen/Breakfast Room
Study/Bedroom 5 * Bathroom
3 En Suite Shower Rooms
South Facing Roof Terrace
Inner Courtyard
EPC Rating B 88**

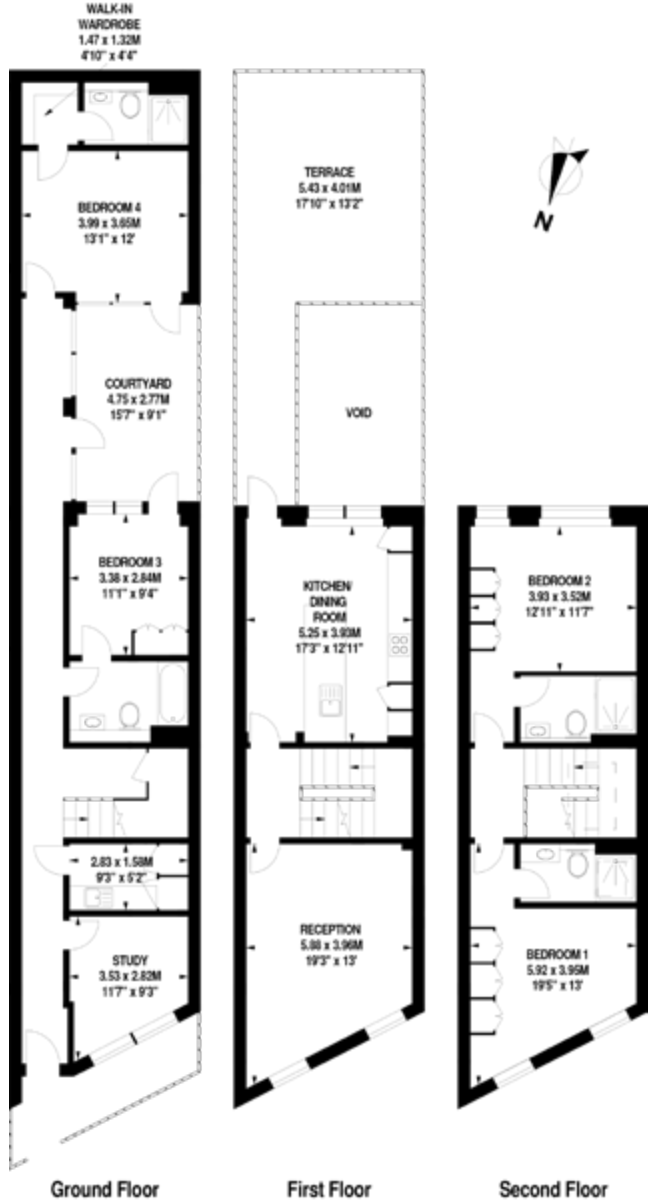
A fabulous contemporary 4/5 bedroom 4 bathroom townhouse over 3 floors with a south facing roof terrace leading directly off the kitchen/breakfast room in addition to a ground floor internal courtyard. The ground floor has the study/bedroom 5 to the front of the house, separate utility room, family bathroom and 2 further double bedrooms (1 with an en suite shower room) both having access directly to the courtyard. The first floor has the reception to the front with the kitchen/breakfast room to the rear opening onto the south facing generous roof terrace. There are 2 further suites of double bedrooms with fitted cupboards and en suite contemporary shower rooms. Offering flexible living/entertaining space and ideally located for the amenities of Askew Road, good local schools and with both Ravenscourt Park and Wendell Park being within easy walking distance this is a MUST SEE!

**GUIDE: £1.4M
FREEHOLD**

SUBJECT TO CONTRACT







FOR ILLUSTRATIVE PURPOSES ONLY - NOT TO SCALE
The position & size of doors, windows, appliances and other features are approximate only.