



Ashchurch Grove W12

FINLAY
BREWER

Ashchurch Grove W12

4 Double Bedrooms * Double Reception
Kitchen/Breakfast/Family Room
Bathroom * Shower Room
Guest Cloakroom * Utility * Garden Office/
Studio * 40'7 x 20'5 Westerly Garden
Bike Storage * EPC Rating C 70 *

A fabulous 4 bedroom 2 bathroom Victorian family home set back from the road with a fantastic westerly garden. The ground floor, all on the same level, comprises a double reception which flows through to the full width kitchen/breakfast/family room. Glass sliding doors open to the garden, which is initially paved then lawned, at the bottom of which is an office/studio and also garden storage. There is also a guest cloakroom on this floor and useful bike storage to the side of the front garden. The first floor half landing has a bedroom overlooking the garden, shower room and utility. Off the main landing is the master bedroom to the front and double bedroom behind. The top floor comprises a dual aspect double bedroom and further bathroom. All bedrooms have built-in cupboards providing excellent storage space.

These houses rarely come to the market and being a cul-de-sac makes Ashchurch Grove a very quiet residential street – an opportunity not to be missed!

GUIDE: £2.285M
FREEHOLD

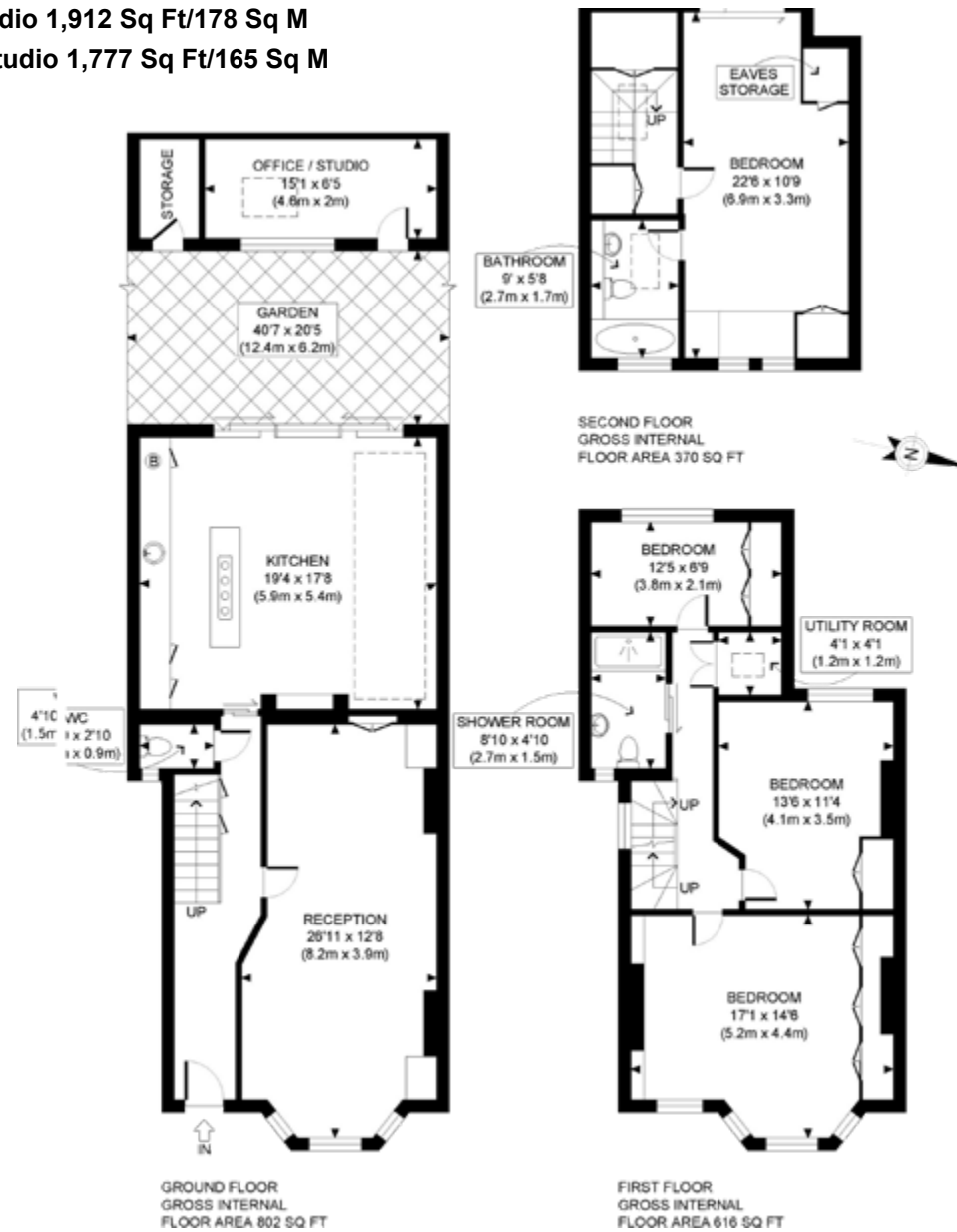
SUBJECT TO CONTRACT







Approximate Gross Internal Area with studio 1,912 Sq Ft/178 Sq M
Approximate Gross Internal Area without studio 1,777 Sq Ft/165 Sq M



FOR ILLUSTRATIVE PURPOSES ONLY - NOT TO SCALE
The position & size of doors, windows, appliances and other features are approximate only.