



Abdale Road W12

FINLAY  
BREWER  
FOR SALE

FINLAY  
BREWER

## Abdale Road W12

**3 Double Bedrooms  
Double Reception  
Kitchen/Breakfast Room \* Dining Room  
2 Shower Rooms (1 En Suite)  
Westerly Paved Garden  
No Onward Chain \* EPC Rating TBC**

---

**A charming 3 double bedroom 2 bathroom house situated on the western side of this tree lined residential street.**

The house has wood flooring to the double reception and all bedrooms whilst the kitchen, dining room and both bathrooms have tiled flooring. The house is presented in good order throughout, has French doors to the paved patio area from both receptions, and a feature marble fireplace to the front of the sitting room.

Ideally located for transport links at Shepherds Bush Green and with no onward chain an early viewing is recommended!

---

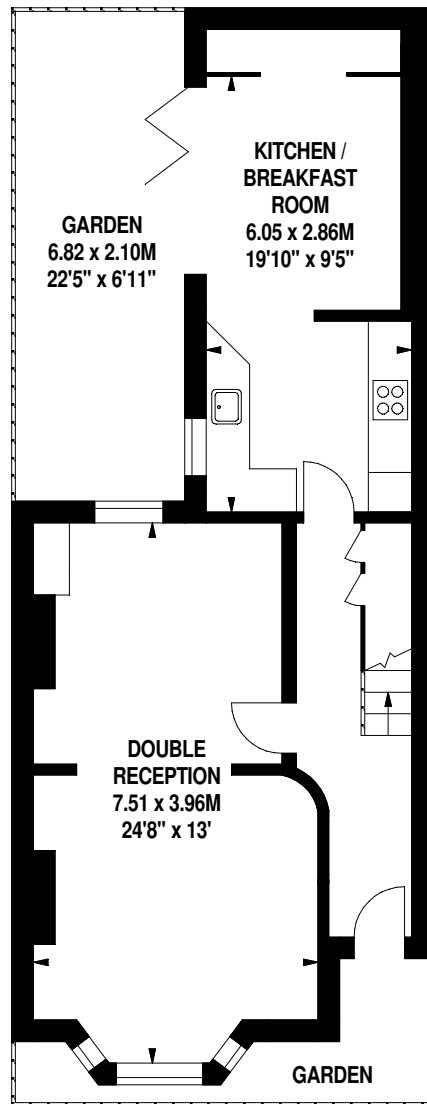
**GUIDE: £975,000  
FREEHOLD**

SUBJECT TO CONTRACT

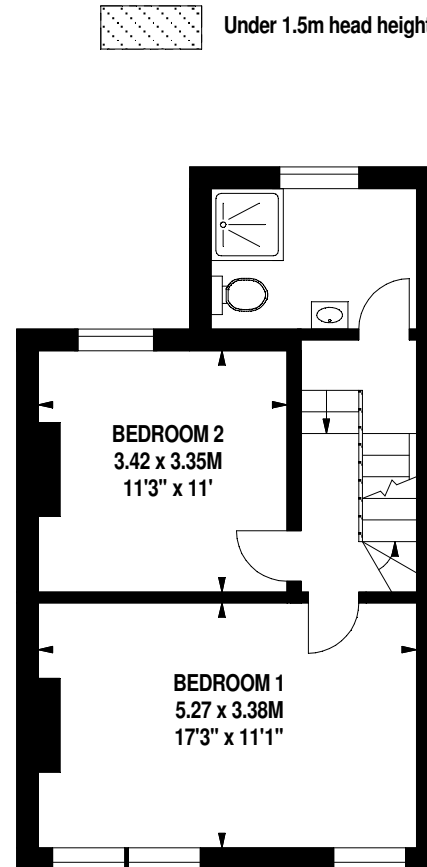




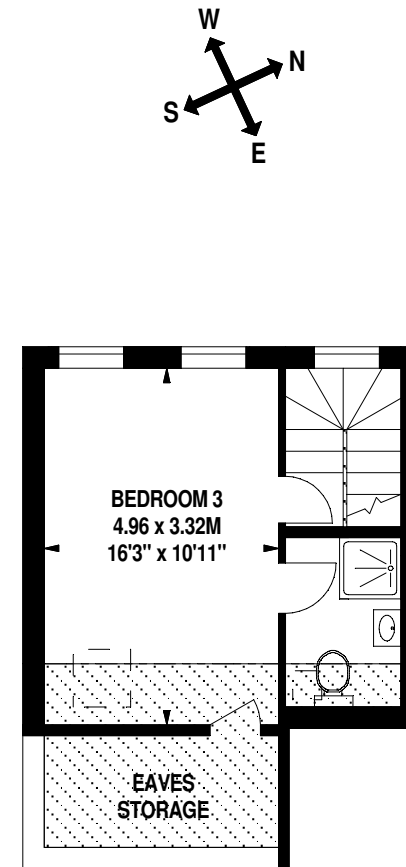
Approximate Gross Internal Area 1,313 Sq Ft/122 Sq M  
Including Restricted Height of 43 Sq Ft/4 Sq M  
Excluding Eaves Storage of 54 Sq Ft/5 Sq M



Ground Floor

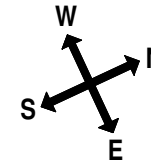


First Floor



Second Floor

Under 1.5m head height



FOR ILLUSTRATIVE PURPOSES ONLY - NOT TO SCALE  
The position & size of doors, windows, appliances and other features are approximate only.