



**Bevan Mews W12**

**FINLAY  
BREWER**

## Bevan Mews W12

**3 Double Bedrooms**  
**Open Plan Kitchen/Breakfast/Reception**  
**2 Bathrooms (1 En Suite)**  
**Utility/Cloakroom**  
**Paved & Walled Garden**  
**Private Parking for 2 Cars**  
**Bike Storage \* EPC Rating C 77**

---

**A fabulous 3 double bedroom 2 bathroom house within a secure gated development of only 8 mews properties.**

The open plan kitchen/breakfast/reception occupies the entire ground floor with bi fold doors onto the paved walled garden. There is also a utility/cloakroom on this floor. With wonderful vaulted ceilings the first floor has the master bedroom with en suite bathroom, 2 further double bedrooms and family bathroom.

Immaculately presented this property really is a **MUST SEE!**



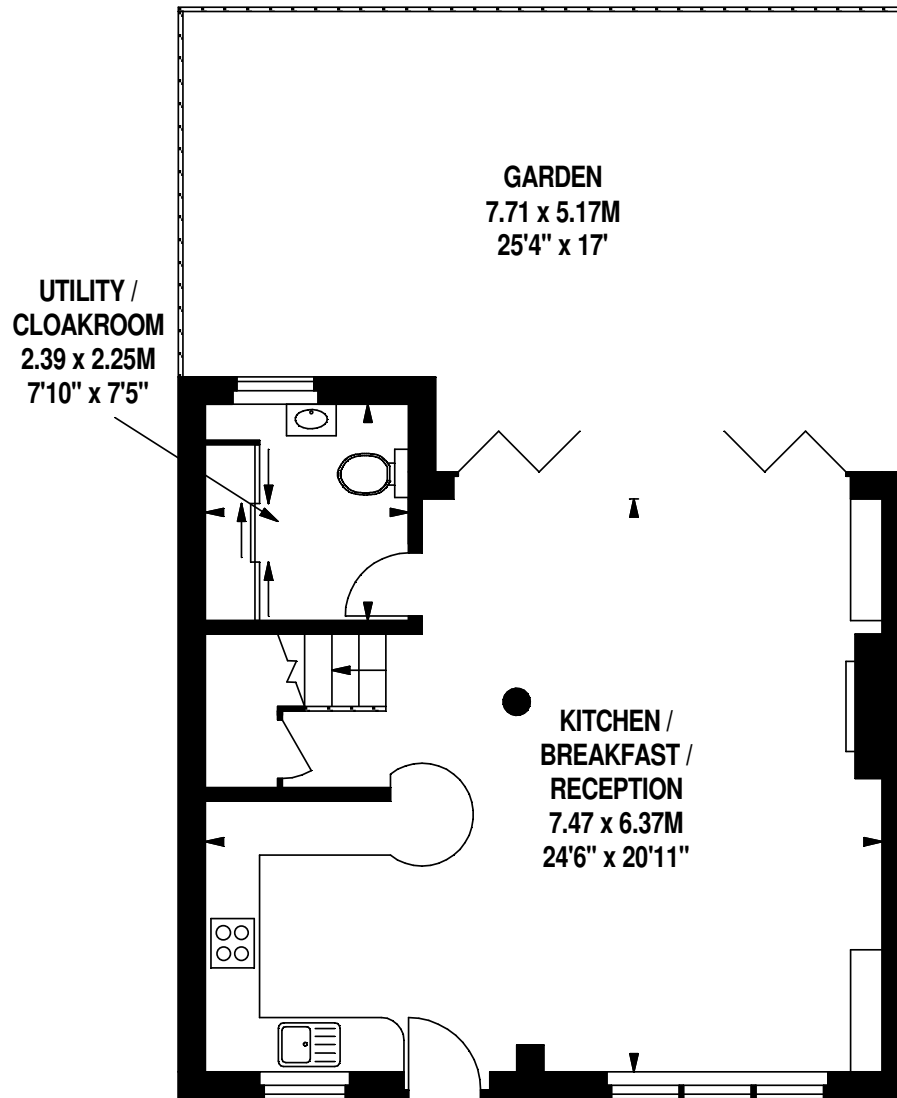
---

**GUIDE: £1,050,000**  
**FREEHOLD**

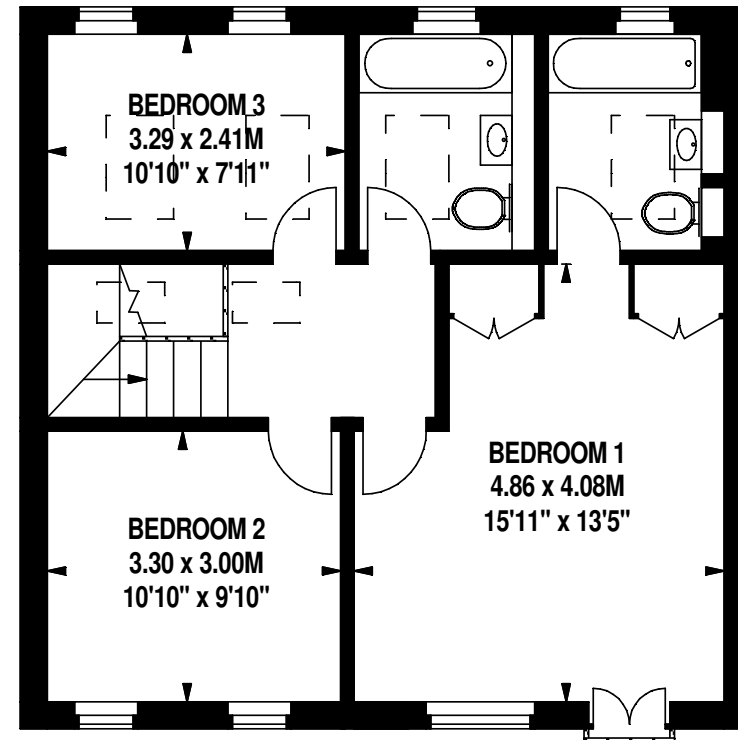
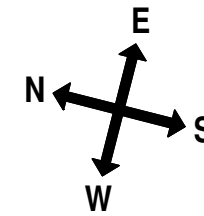
**SUBJECT TO CONTRACT**  
**SERVICE CHARGE: APX £1400 PA**



Approximate Gross Internal Area 1,152 Sq Ft/107 Sq M



**Ground Floor**



**First Floor**

FOR ILLUSTRATIVE PURPOSES ONLY - NOT TO SCALE  
The position & size of doors, windows, appliances and other features are approximate only.