



3 & 4 Willow Mews W12

**FINLAY
BREWER**

Willow Mews W12

2 & 3 Bedroom Eco-Friendly Houses
Open Plan Kitchen/Breakfast/Reception
2 Bathrooms (3 Bed Houses only)
Courtyard Gardens * Off Street Parking
PodPoint Electric Charging Points
CCTV Entry * EPC Rating TBC

A unique gated development of 4 new build, Eco-friendly mews properties each with off street parking and PodPoint electric car charging points.

There are two 3 bedroom 2 bathroom houses with private gardens and balconies, and two 2 bedroom 1 bathroom houses each with inner courtyards and green Sedum roofs. The two-storey houses have vaulted ceilings, whilst all four properties have electric opening roof lights with an automatic rain-activated closing mechanism and all have underfloor heating; Neff integrated cooking appliances; Baumatic washer and dryer; extensive storage and built-in wardrobes. The properties are fully wired for networks with TV and data (Cat 6 sockets in all rooms) and set within a secure gated environment with CCTV entry controls.

These are fabulous new built homes ready to move into without further expense – an early viewing is recommended!

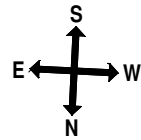
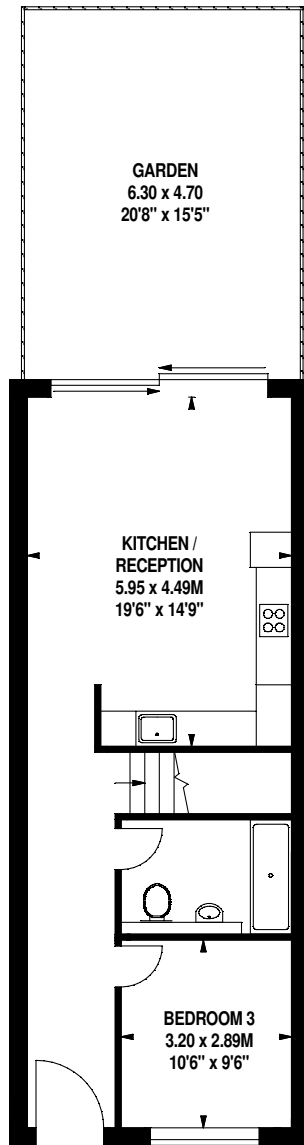
GUIDE £750,000 (2 BEDROOMS)
GUIDE £950,000 (3 BEDROOMS)
FREEHOLD

SUBJECT TO CONTRACT

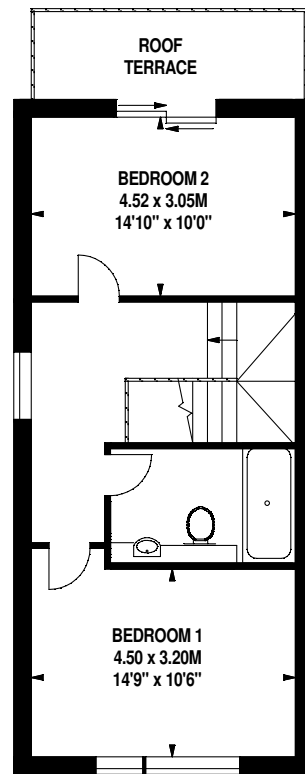


Approximate Gross Internal Area 102 sq m / 1097 sq ft

Approximate Gross Internal Area 105 sq m / 1130 sq ft

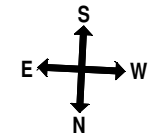
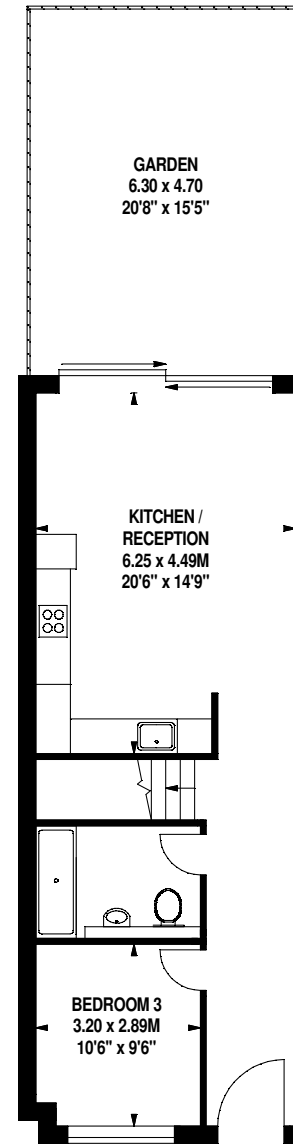


House 3

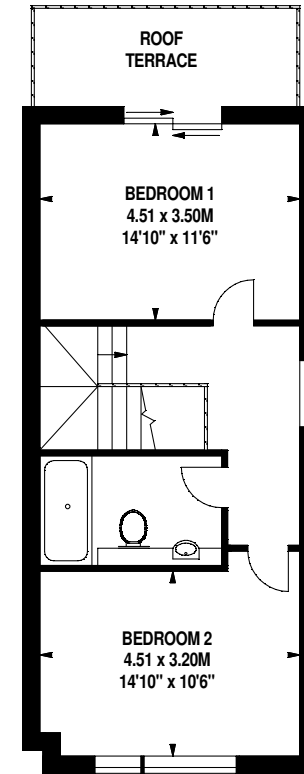


Ground Floor

First Floor



House 4



Ground Floor

First Floor

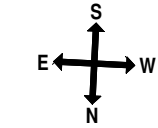
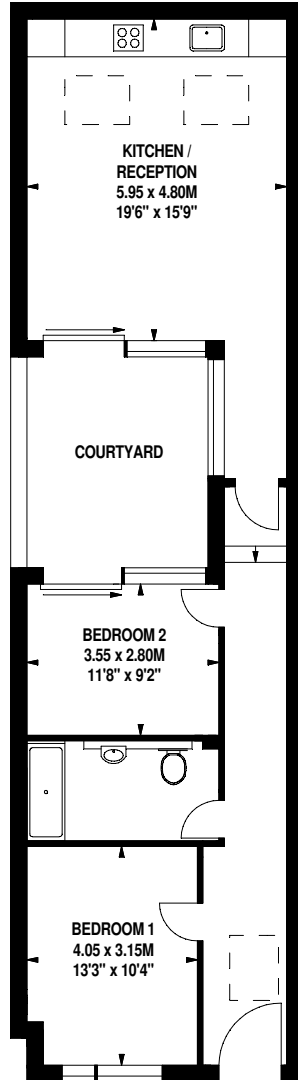
MEASUREMENTS TAKEN FROM DEVELOPMENT BROCHURE
FOR ILLUSTRATIVE PURPOSES ONLY - NOT TO SCALE
The position & size of doors, windows, appliances and other features are approximate only.



2 & 5 Willow Mews W12



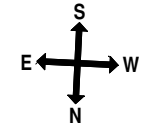
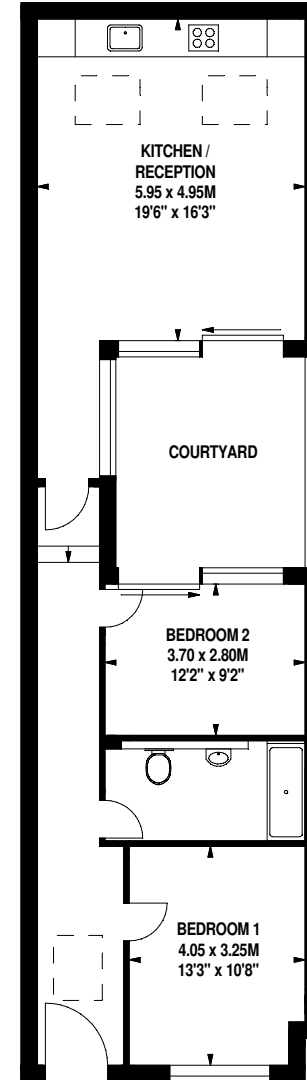
Approximate Gross Internal Area 77 sq m / 828 sq ft



House 2

Ground Floor

Approximate Gross Internal Area 79 sq m / 850 sq ft



House 5

Ground Floor

MEASUREMENTS TAKEN FROM DEVELOPMENT BROCHURE
FOR ILLUSTRATIVE PURPOSES ONLY - NOT TO SCALE
The position & size of doors, windows, appliances and other features are approximate only.