



Coverdale Road W12

FINLAY  
BREWER

## Coverdale Road W12

**5 Double Bedrooms  
Elegant Double Reception  
Full Width Kitchen/Breakfast Room  
Family Bathroom  
2 Shower Rooms (1 En Suite)  
Westerly Garden \* Cellar Storage  
No Onward Chain \* EPC Rating E 42**

---

A handsome 'big-boned' 5 double bedroom 3 bathroom Victorian family house contemporary in style whilst retaining many original features and arranged over 3 floors and providing flexible living/entertaining space.

The high ceilinged reception leads into the full width contemporary kitchen/breakfast room which is flooded with light and opens onto the westerly facing garden. There are 5 double bedrooms, 2 shower rooms and a family bathroom on the upper floors.

This house has a great feel, is very conveniently located for excellent local schools and transport links and appears to be in good order throughout. With no onward chain an early viewing is strongly recommended!

---

**GUIDE: £1.795M  
FREEHOLD**

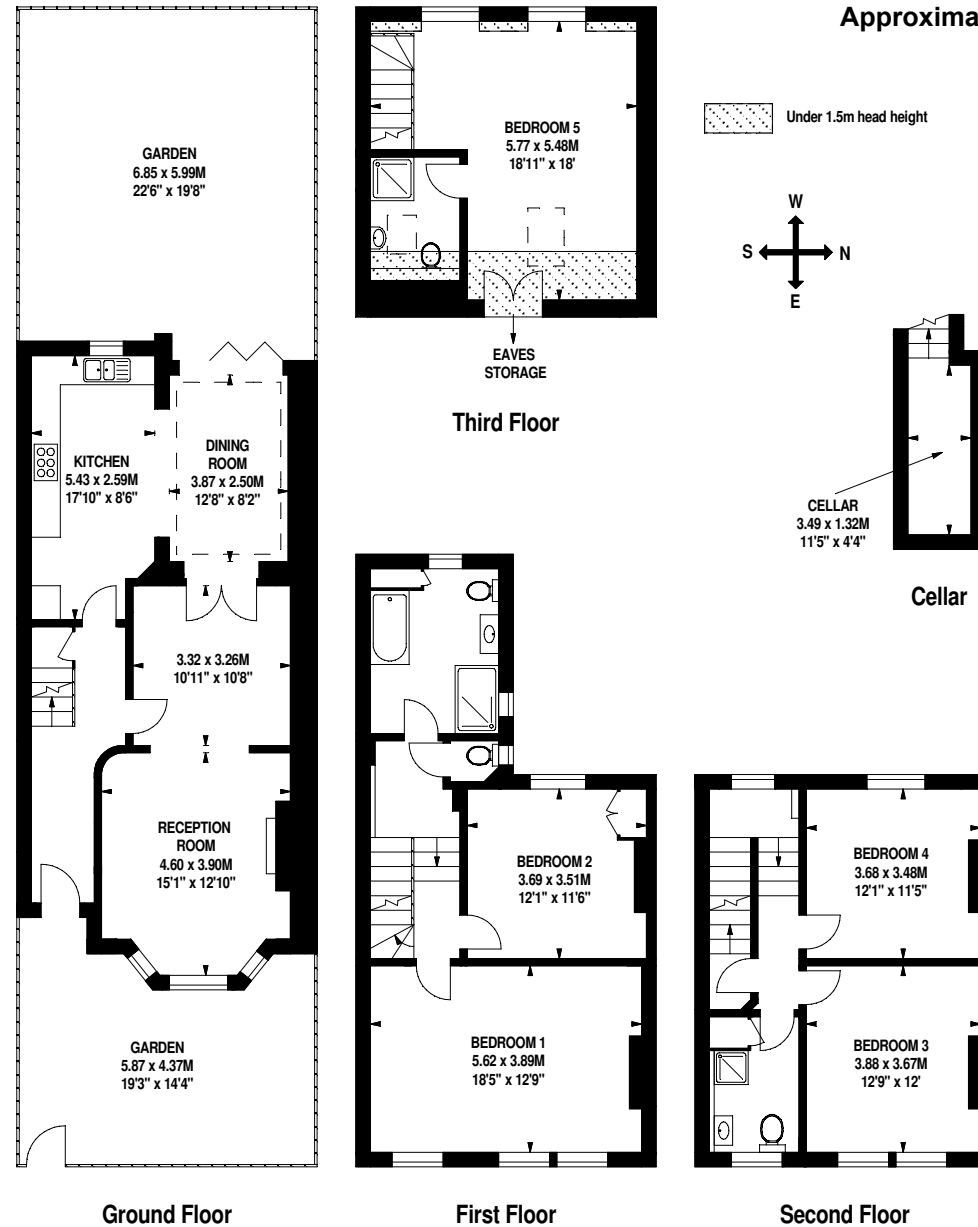
SUBJECT TO CONTRACT





\* Please note these are old photos.

Approximate Gross Internal Area 2,110 Sq Ft/196 Sq M



FOR ILLUSTRATIVE PURPOSES ONLY - NOT TO SCALE  
The position & size of doors, windows, appliances and other features are approximate only.