



Glenfield Close, Outwell, WISBECH, PE14 8RU

welcome to

Glenfield Close, Outwell, WISBECH

Peacefully positioned with field views to the front, this spacious home offers huge potential on a large mature plot. Featuring versatile living space, extensive gardens and ample parking, it's perfect for buyers looking to update and create a home in a popular rural setting.



Accommodation:

Double-glazed entrance door to:

Entrance Hall

Radiator. Storage cupboard. Stairs leading to the first floor landing.

Dining Room

Feature fireplace. Radiator. Opening to:

Lounge

Double-glazed bay window to the front. Feature fireplace (not currently working). Radiator.

Sun Room

Double-glazed French doors to the rear leading to the rear garden. Double-glazed skylight window.

Kitchen

Fitted with wall & base units with work surfaces over, a sink & drainer unit & space for a freestanding cooker. Radiator. Double-glazed window to the rear.

Utility Room

Fitted with sink & drainer unit. Work surfaces. Space & plumbing for a washing machine & tumble dryer. Two double-glazed windows to the rear. Double-glazed door to the side.

Bedroom Two

Double-glazed window to the side. Double-glazed door to the rear.

Bathroom

Fitted with WC, wash hand basin & bath. Double-glazed windows to the front & side.

First Floor Landing

Stairs from the entrance hall.

Bedroom One

Single-glazed window to the front. Radiator.

Bedroom Three

Single-glazed window to the rear. Airing cupboard. Radiator.

Bedroom Four

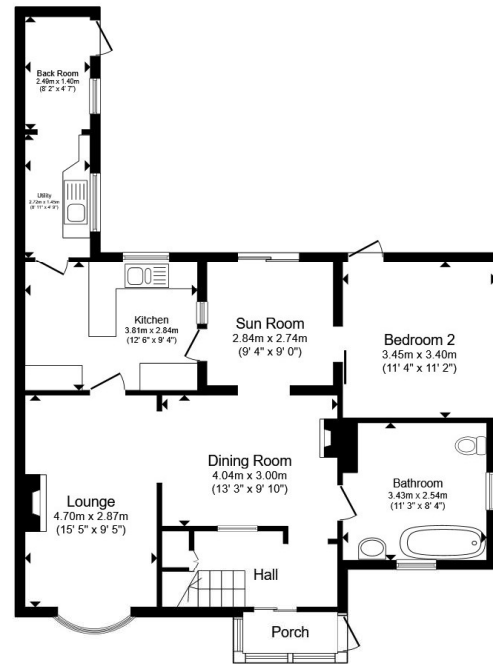
Single-glazed window to the front. Radiator.

Outside

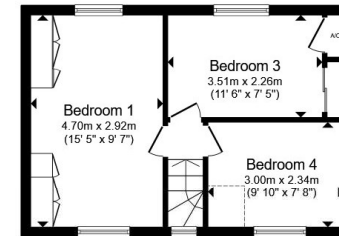
To the front of the property, a large gravelled driveway provides off-road parking for multiple vehicles. To the rear, the extensive garden offers fantastic potential, being mainly laid to lawn, alongside a number of mature trees, shrubs & hedges, as well as a generous patio area.

Agent's Note

Heating to the property is served by oil central heating. Please contact the branch for further information if required.



Ground Floor



First Floor

Total floor area 118.2 m² (1,272 sq.ft.) approx

This floor plan is for illustrative purposes only. It is not drawn to scale. Any measurements, floor areas (including any total floor area), openings and orientation are approximate. No details are guaranteed, they cannot be relied upon for any purpose and they do not form part of any agreement. No liability is taken for any error, omission or misstatement. A party must rely upon its own inspection(s). Powered by www.propertybox.io



welcome to

Glenfield Close, Outwell, WISBECH

- Four bedroom semi-detached house
- Large, mature plot
- Scope for updating
- Field views
- Multiple reception rooms

Tenure: Freehold EPC Rating: D

Council Tax Band: A

offers over

£220,000



Please note the marker reflects the postcode not the actual property

check out more properties at williamhbrown.co.uk



Property Ref:
DHM112901 - 0002

1. MONEY LAUNDERING REGULATIONS Intending purchasers will be asked to produce identification documentation at a later stage and we would ask for your co-operation in order that there is no delay in agreeing the sale. 2. These particulars do not constitute part or all of an offer or contract. 3. The measurements indicated are supplied for guidance only and as such must be considered incorrect. Potential buyers are advised to recheck measurements before committing to any expense. 4. We have not tested any apparatus, equipment, fixtures or services and it is in the buyers interest to check the working condition of any appliances. 5. Where an EPC, or a Home Report (Scotland only) is held for this property, it is available for inspection at the branch by appointment. If you require a printed version of a Home Report, you will need to pay a reasonable production charge reflecting printing and other costs. 6. We are not able to offer an opinion either written or verbal on the content of these reports and this must be obtained from your legal representative. 7. Whilst we take care in preparing these reports, a buyer should ensure that his/her legal representative confirms as soon as possible all matters relating to title including the extent and boundaries of the property and other important matters before exchange of contracts.



01366 387638



DownhamMarket@williamhbrown.co.uk



2 Market Place, DOWNHAM MARKET, Norfolk,
PE38 9DE



williamhbrown.co.uk