



Nuns Way, Cambridge
£375,000 Freehold

**Sharman
Quinney**

Key Features



- Mid Terrace family home
- Three / four bedrooms
- Versatile Layout Throughout
- Spacious and bright living room
- Studio/Workshop
- New and Replaced boiler in May 2026
- Desirable Location
- EPC is TBC

Located on Nuns Way, this family home presents an excellent opportunity for both first time buyers and home movers. The ground floor features a modern kitchen with integrated appliances and ample space for a dining table, providing a functional and comfortable area for family life.

The property has been thoughtfully reconfigured, with the original living/dining area converted into a fourth bedroom. The living room is bright and versatile, offering plenty of space for a range of furniture layouts. Should the new owners prefer the original arrangement, reinstating the former living/dining space would be straightforward.



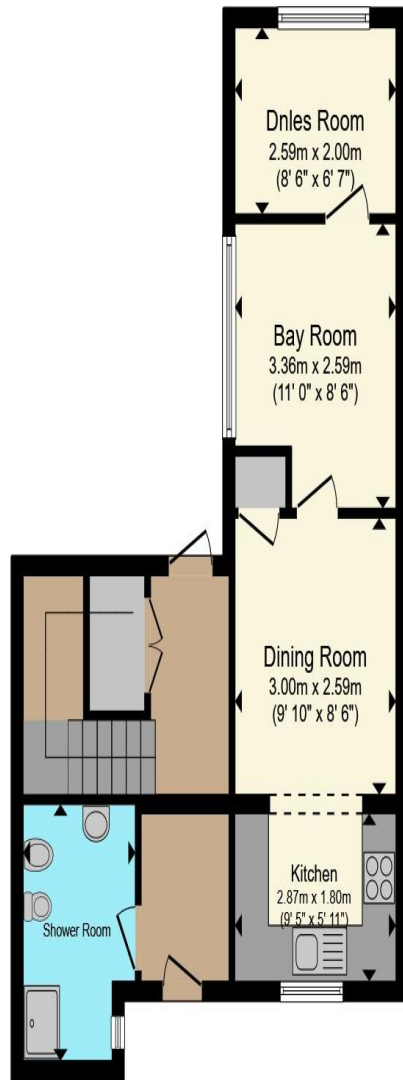
A dedicated study and home office provides an ideal environment for remote working or quiet focus. Completing the ground floor is a well appointed shower room, adding further convenience for busy households.

Upstairs, the home offers three well-presented bedrooms. Bedroom one is a generously proportioned double, providing a calm and comfortable retreat with a large, fitted wardrobe and room additional furnishings. Bedroom two is also a well sized double, ideal for guests or family members. Bedroom three offers impressive versatility, whether used as a child's room, guest space, dressing room, or home office.

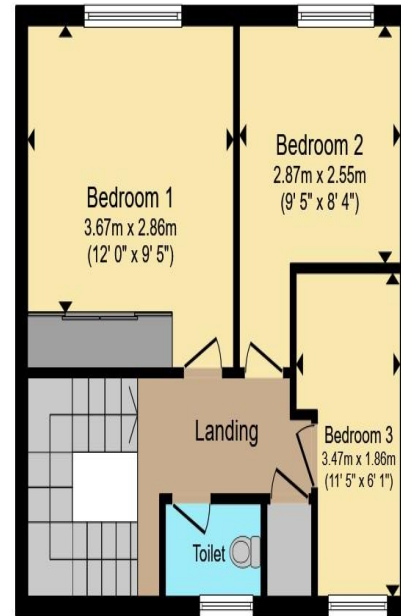
The loft has been fully updated and now features complete carpeting, boarding, insulation throughout, and fully installed power and electrics.

Externally, the property includes a useful studio/workshop, ideal for hobbies, storage, or practical workspace. There is residents' parking available on the street, providing convenient access for the household. The home was extended to the front in 1990, giving additional space, and it still retains its original flooring with oak flooring throughout the ground floor. The boiler was replaced in May 2026, offering improved efficiency for the new owners.





Ground Floor



First Floor

Total floor area 87.7 m² (944 sq.ft.) approx

This floor plan is for illustrative purposes only. It is not drawn to scale. Any measurements, floor areas (including any total floor area), openings and orientation are approximate. No details are guaranteed, they cannot be relied upon for any purpose and they do not form part of any agreement. No liability is taken for any error, omission or misstatement. A party must rely upon its own inspection(s). Powered by www.propertybox.io

**Sharman
Quinney**

All measurements are stated on the floorplan

To view this property call Sharman Quinney on:
01223 426139

Selling your property?

Contact us to arrange a **FREE** home valuation.

 01223 426139

 Unit 5 Orchard House Unwin Square, Orchard Park, CAMBRIDGE, Cambridgeshire, CB4 2AD

 orchardpark@sharmanquinney.co.uk

 www.sharmanquinney.co.uk



 SCAN ME



Sharman Quinney Holdings Limited is registered in England and Wales under company number 4174227, Registered Office is Cumbria House, 16-20 Hockliffe Street, Leighton Buzzard, Bedfordshire, LU7 1GN. VAT Registration Number is 500 2481 05.

1: These particulars do not constitute part or all of an offer or contract. 2: The measurements indicated are supplied for guidance only and as such must be considered incorrect. 3: Potential buyers are advised to recheck the measurements before committing to any expense. 4: Sharman Quinney has not tested any apparatus, equipment, fixtures, fittings or services and it is the buyers interests to check the working condition of any appliances. 5: Sharman Quinney has not sought to verify the legal title of the property and buyers must obtain verification from their legal representative. 6: Intending purchasers will be asked to produce identification documentation at a later stage and we would ask your co-operation in order that there will be no delay in agreeing the sale. Ref: ORP102341 - 0005

