



WARE & CO
estate and letting agents

63 Stockmoor Drive, Bridgwater – TA6 6AH
£202,500

63 Stockmoor Drive

Bridgwater

- Modern two-bedroom mid-terrace home
- Sought-after Stockmoor Village location
- Garage with personal door to the rear garden
- Driveway parking
- Entrance hall with cloakroom/WC
- Fitted kitchen overlooking the front aspect
- Spacious living room with double doors to the garden
- Modern three-piece bathroom suite
- Excellent access to the M5 motorway and local amenities

TOTAL FLOOR AREA 56 sq.m.

TENURE Freehold

COUNCIL TAX Somerset Council Tax Band B. Charges payable for 2026/27 - £1,944.08

SERVICES Main services of gas, electricity, water and drainage are connected. Broadband speeds of up to 1800mbps are available and good mobile signal across the four main networks (source: Ofcom)

EPC Energy Efficiency Rating: C



Situated within the highly regarded Stockmoor Village development, this modern two-bedroom mid-terrace home offers well-presented accommodation throughout together with the added benefits of driveway parking, a garage and an enclosed rear garden. Ideal for first-time buyers, downsizers or investors alike, the property enjoys a convenient position with excellent access to local amenities and transport links.

The accommodation is approached via an entrance hall with stairs rising to the first floor and a useful cloakroom/WC. Positioned at the front of the property is a fitted kitchen offering a range of storage units, work surfaces and space for everyday appliances.

To the rear, the living room provides a comfortable and versatile reception space with ample room for seating. Double doors open directly onto the rear garden, allowing plenty of natural light to flood the room and creating an ideal setting for both relaxing and entertaining.

On the first floor are two generously proportioned bedrooms and a well-appointed three-piece bathroom comprising a panelled bath with shower over, wash hand basin and WC.





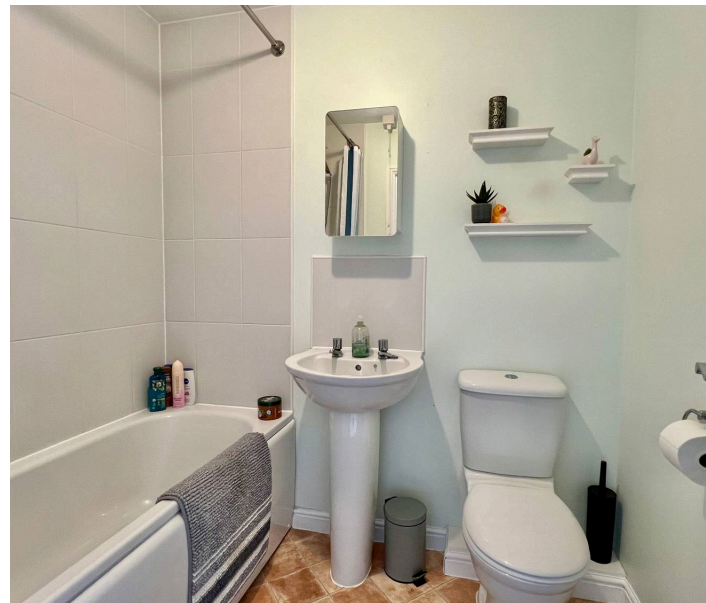
Outside, the enclosed rear garden provides a pleasant space for outdoor enjoyment and benefits from a personal door leading directly into the garage. The garage offers excellent storage or workshop potential and is complemented by driveway parking to the front of the garage. This attractive home combines modern convenience with practical living space in a sought-after location and is available for those seeking an easy-to-maintain property close to excellent amenities.

Area Summary

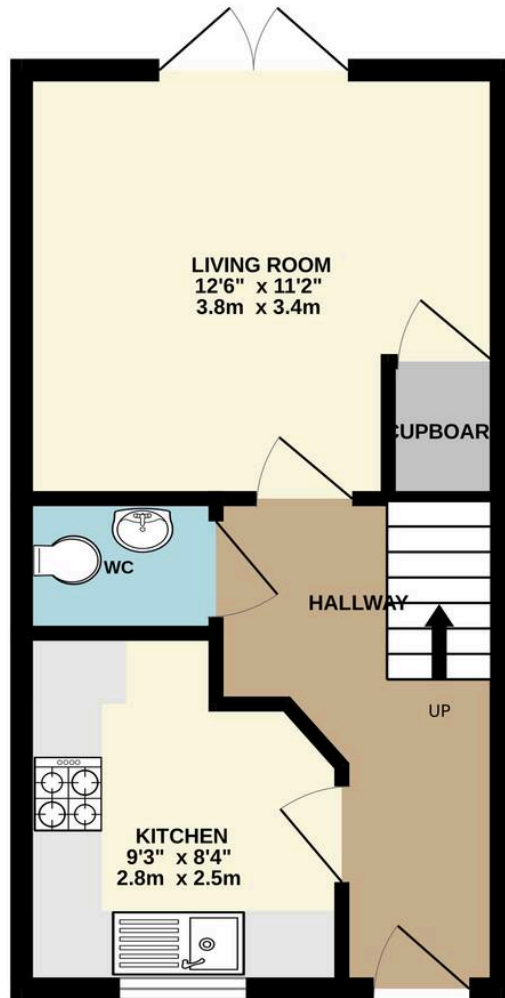
Stockmoor Village is one of Bridgwater's most popular modern developments, offering a range of everyday amenities including local shops, schools, play parks and pleasant walking routes. Bridgwater town centre provides a wider selection of shopping, leisure and educational facilities, whilst the nearby Somerset countryside and coastline offer numerous opportunities for outdoor recreation.

For commuters, the property is exceptionally well placed with Junction 24 of the M5 motorway situated within easy reach, providing convenient access north towards Bristol and south towards Exeter. Bridgwater railway station offers regular services to Taunton, Bristol and beyond, making the location ideal for those travelling throughout the South West and further afield.

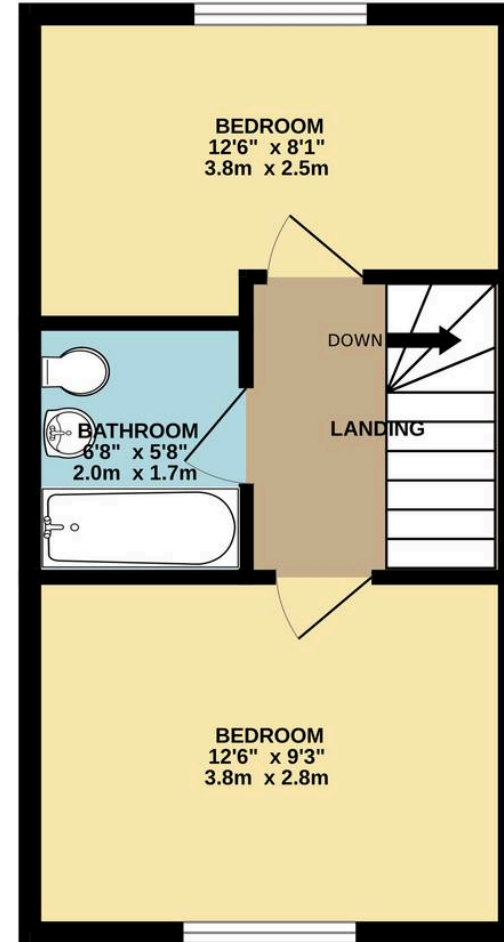
AGENTS NOTE The owners of this property are related to a staff member of Ware & Company



GROUND FLOOR
300 sq.ft. (27.9 sq.m.) approx.



1ST FLOOR
300 sq.ft. (27.9 sq.m.) approx.



TOTAL FLOOR AREA : 600 sq.ft. (55.8 sq.m.) approx.

Whilst every attempt has been made to ensure the accuracy of the floorplan contained here, measurements of doors, windows, rooms and any other items are approximate and no responsibility is taken for any error, omission or mis-statement. This plan is for illustrative purposes only and should be used as such by any prospective purchaser. The services, systems and appliances shown have not been tested and no guarantee as to their operability or efficiency can be given.
Made with Metropix ©2026



Ware & Co

Ware & Co, 53 Bridge Street - TA1 1TP

01823259604 • info@wareandco.com • www.wareandco.com

