



Old Masters Close, Walsall WS1 2QP

welcome to

Old Masters Close, Walsall

*** TWO - BEDROOM TOWN HOUSE *** RECEPTION ROOM *** FITTED KITCHEN *** MODERN BATHROOM *** LOCAL SHOPS, SCHOOLS & AMENITIES *** TRANSPORT LINKS INCLUDING ROAD & RAIL *** IDEAL FOR FIRST TIMES BUYERS, INVESTORS OR DOWNSIZERS ***

Agent Note

This property is council tax band B.

Entrance Hall

Stair to first floor, door to reception room.

Reception Room

14' 10" x 10' 1" (4.52m x 3.07m)

Double glazed window to front, door to kitchen/diner, feature fireplace with inset fire, ceiling light connection, central heating radiator, carpet.

Kitchen/Diner

13' 3" x 8' 8" (4.04m x 2.64m)

Double glazed window & door to rear, ceiling light connection, range of fitted modern wall & base units with worktops over, tiled splash-back, freestanding cooker, sink & drainer.

Landing

Doors to two bathrooms & bathroom.

Bedroom 1

13' 4" x 9' 4" (4.06m x 2.84m)

Double glazed window to rear, ceiling light connection, carpet, central heating radiator.

Bedroom 2

13' 3" x 8' 3" (4.04m x 2.51m)

Double glazed window to front, ceiling light connection, carpet, central heating radiator.

Bathroom

Double glazed frosted window, bath, low level flush w/c, wash hand basin with hot & cold taps and mirror above, tiled floor & to splash-prone areas, shaving point.

Front Garden

Path to front door, small lawned area.

Rear Garden

Patio area, mainly laid to lawn, fully fenced surrounds for privacy, a few small trees.

Parking

Allocated parking.





check out more properties at shipways.co.uk



welcome to

Old Masters Close, Walsall

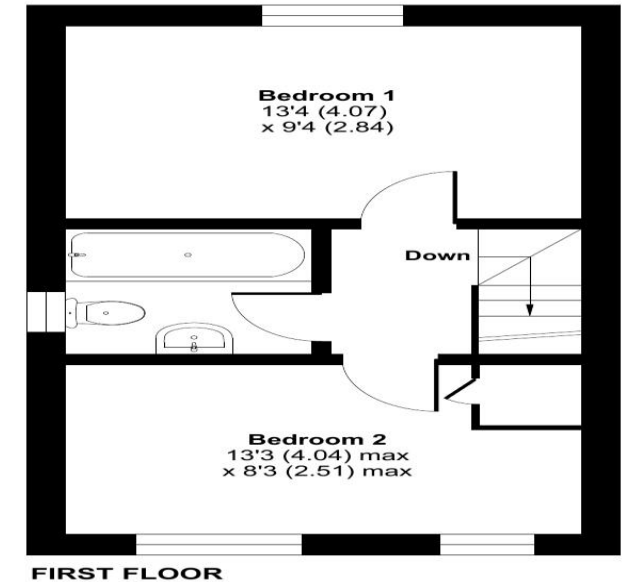
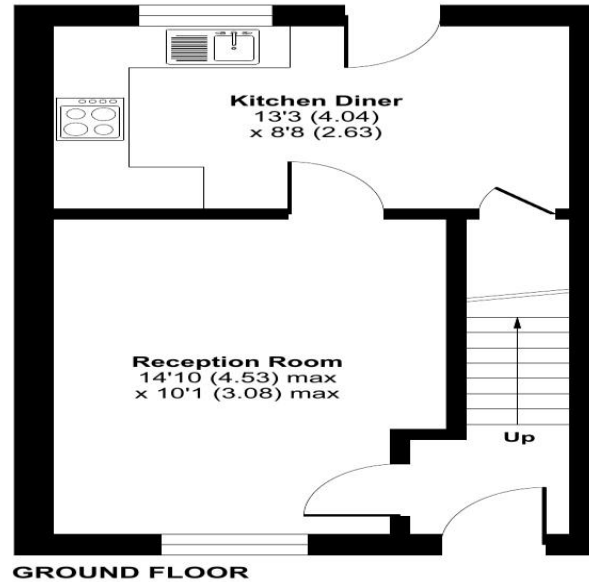
- Offered For Sale with No Upward Chain
- Modern Style Property
- Two Bedrooms
- Family Bathroom
- Fitted Kitchen with Integral Appliances

Tenure: Freehold EPC Rating: D
Council Tax Band: B

offers in excess of
£220,000

Old Masters Close, Walsall, WS1

Approximate Area = 636 sq ft / 59 sq m
For identification only - Not to scale



 Floor plan produced in accordance with RICS Property Measurement 2nd Edition, incorporating International Property Measurement Standards (IPMS2 Residential). © nichecom 2026. Produced for Flyp Homes Limited. REF: 1439922

check out more properties at shipways.co.uk



Property Ref:
HBN112413 - 0002

1. MONEY LAUNDERING REGULATIONS Intending purchasers will be asked to produce identification documentation at a later stage and we would ask for your co-operation in order that there is no delay in agreeing the sale. 2. These particulars do not constitute part or all of an offer or contract. 3. The measurements indicated are supplied for guidance only and as such must be considered incorrect. Potential buyers are advised to recheck measurements before committing to any expense. 4. We have not tested any apparatus, equipment, fixtures or services and it is in the buyers interest to check the working condition of any appliances. 5. Where an EPC, or a Home Report (Scotland only) is held for this property, it is available for inspection at the branch by appointment. If you require a printed version of a Home Report, you will need to pay a reasonable production charge reflecting printing and other costs. 6. We are not able to offer an opinion either written or verbal on the content of these reports and this must be obtained from your legal representative. 7. Whilst we take care in preparing these reports, a buyer should ensure that his/her legal representative confirms as soon as possible all matters relating to title including the extent and boundaries of the property and other important matters before exchange of contracts.

Shipways is a trading name of Sequence (UK) Limited which is registered in England and Wales under company number 4268443, Registered Office is Cumbria House, 16-20 Hockliffe Street, Leighton Buzzard, Bedfordshire, LU7 1GN. VAT Registration Number is 500 2481 05.

Not for marketing purposes INTERNAL USE ONLY



0121 427 3264



harborne@shipways.co.uk



172 High Street, Harborne, BIRMINGHAM,
West Midlands, B17 9PP



shipways.co.uk