



**Stakes Road, Waterlooville PO7 5NP**

**welcome to**

## **Stakes Road, Waterlooville**

Chalet bungalow with downstairs bedroom and shower room, two doubles upstairs plus and office/bed four and family bathroom. Landscaped rear garden, garage and off road parking.

### **Entrance Hall**

Stairs to first floor. Two storage cupboards. Doors to:

### **Lounge**

Double glazed bay window to front aspect. Carpet flooring, radiator, wall mounted fire.

### **Dining Room**

Double glazed bay window to front aspect. Wood flooring, radiator, closed off fireplace with hearth and mantel over.

### **Kitchen**

Double glazed French doors leading to rear garden. Range of wall and base cupboards and drawers with work surface over, incorporating one and a half bowl sink unit with mixer tap over. Space for freestanding oven and hob with extractor hood over, built-in fridge/freezer. Tiled floor.

### **Shower Room**

Double glazed window to rear aspect. Shower cubicle, wash hand basin, low level WC. Vinyl flooring, heated towel rail.

### **Bedroom Three**

Double glazed window to rear aspect. Laminate flooring, radiator.

### **First Floor Landing**

Storage space. Doors to:

### **Bedroom One**

Double glazed box bay window to front aspect. Laminate flooring, radiator. Storage cupboards

### **Bedroom Two**

Double glazed box bay window to front aspect. Carpet flooring, radiator, storage space.

### **Office / Bedroom Four**

Double glazed window to rear aspect. Carpet flooring, radiator.

### **Bathroom**

Double glazed window to rear aspect. Panel enclosed bath with telephone style shower attachment, pedestal wash hand basin and low level WC. Radiator.

### **Outside**

#### **Front**

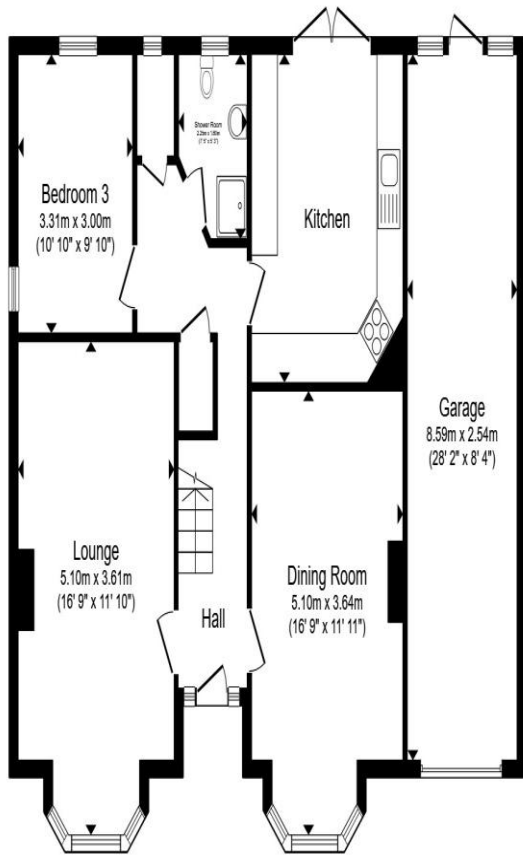
Block paved driveway, providing off road parking, leading to garage.

### **Garage**

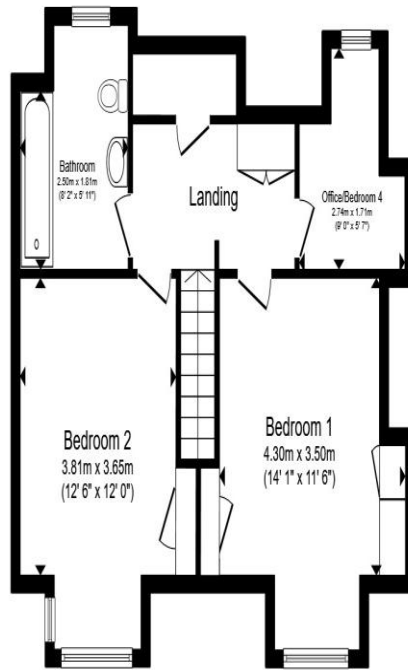
Up and over electric roller door. Windows to the rear and personal door to rear garden. Power and light.

### **Rear Garden**

Landscaped garden, laid to patio with steps down to lawn with established shrubs, fruit trees, a pond, and summer house.



**Ground Floor**



**First Floor**

Total floor area 155.6 m<sup>2</sup> (1,675 sq.ft.) approx

This floor plan is for illustrative purposes only. It is not drawn to scale. Any measurements, floor areas (including any total floor area), openings and orientation are approximate. No details are guaranteed, they cannot be relied upon for any purpose and they do not form part of any agreement. No liability is taken for any error, omission or misstatement. A party must rely upon its own inspection(s). Powered by [www.propertybox.io](http://www.propertybox.io)



**welcome to**  
**Stakes Road,**  
**Waterlooville**

- No Forward Chain
- Four Bedrooms
- Landscaped Rear Garden
- Downstairs Shower Room / Upstairs Bathroom
- Garage & Off Road Parking

Tenure: Freehold EPC Rating: C  
Council Tax Band: E

**£450,000**



**view this property online** [fox-and-sons.co.uk/Property/WLV109778](https://fox-and-sons.co.uk/Property/WLV109778)



Property Ref:  
WLV109778 - 0003

1. MONEY LAUNDERING REGULATIONS Intending purchasers will be asked to produce identification documentation at a later stage and we would ask for your co-operation in order that there is no delay in agreeing the sale. 2. These particulars do not constitute part or all of an offer or contract. 3. The measurements indicated are supplied for guidance only and as such must be considered incorrect. Potential buyers are advised to recheck measurements before committing to any expense. 4. We have not tested any apparatus, equipment, fixtures or services and it is in the buyers interest to check the working condition of any appliances. 5. Where an EPC, or a Home Report (Scotland only) is held for this property, it is available for inspection at the branch by appointment. If you require a printed version of a Home Report, you will need to pay a reasonable production charge reflecting printing and other costs. 6. We are not able to offer an opinion either written or verbal on the content of these reports and this must be obtained from your legal representative. 7. Whilst we take care in preparing these reports, a buyer should ensure that his/her legal representative confirms as soon as possible all matters relating to title including the extent and boundaries of the property and other important matters before exchange of contracts.

Fox & Sons is a trading name of Sequence (UK) Limited which is registered in England and Wales under company number 4268443, Registered Office is Cumbria House, 16-20 Hockliffe Street, Leighton Buzzard, Bedfordshire, LU7 1GN. VAT Registration Number is 500 2481 05.

  
fox & sons



**023 9226 2447**



[Waterlooville@fox-and-sons.co.uk](mailto:Waterlooville@fox-and-sons.co.uk)



81B London Road, WATERLOOVILLE,  
Hampshire, PO7 7ES



**fox-and-sons.co.uk**