



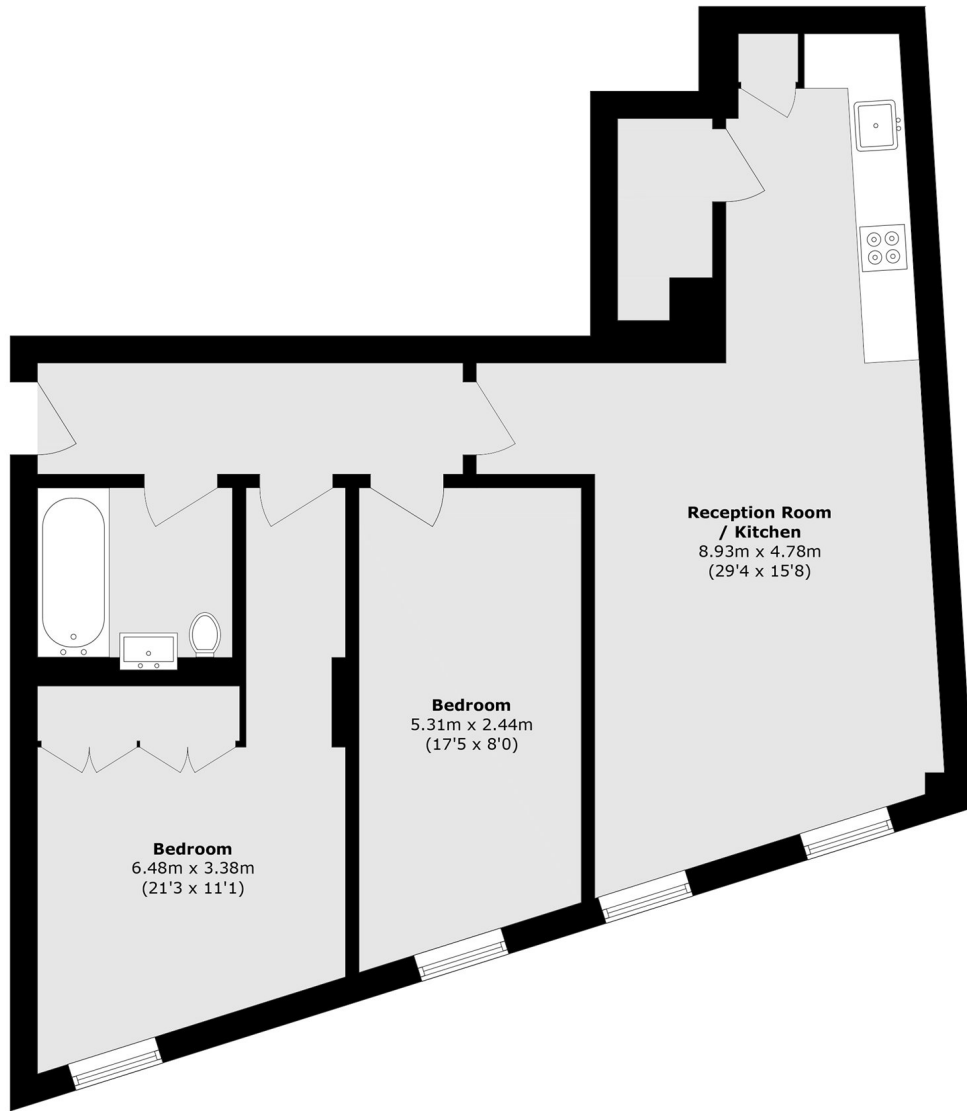
Warple Way, W3

£553 pw (£2,400 pcm)

An immaculately presented two bedroom, one bathroom apartment located on the borders of Acton, Chiswick and Shepherds Bush. Warple Way offers contemporary living space with an open plan kitchen/reception.

Warple Way is located one mile from Turham Green (District line) station and 0.9 miles from Acton Central (overground) station.

- Two Bedrooms • One Bathroom • Open Plan Kitchen •
- Modern • Third Floor • Central Heating •



Total area (approx.): 71.9 sq. m (773.9 sq. ft)

Robertson Smith & Kempson Acton Lettings
137 High Street,
Acton, London, W3
020 8896 3967
actonlettings@robertsonsmithandkempson.co.uk

Energy Rating: B. We aim to make our particulars both accurate and reliable. However they are not guaranteed; nor do they form part of an offer or contract. If you require clarification on any points then please contact us, especially if you're traveling some distance to view. Please note that appliances and heating systems have not been tested and therefore no warranties can be given as to their good working order.