



Pinkmove

Cromwell Road

Guide Price £210,000 to £220,000

- No Chain
- Double Garage
- Separate Living Room and Dining Area
- Modern and Bright Bathroom
- Low-Maintenance Enclosed Rear Garden
- Excellent transport links including nearby train stations
- Close to Risca High Street shops and



3 1 2

Pinkmove

01633 746088
team@pinkmove.co.uk



About the property

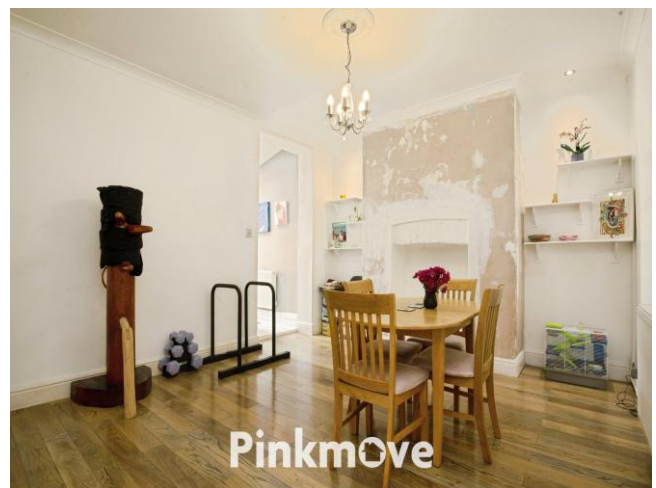
Introducing this well-maintained home, offering generous living space, modern comforts, and excellent practicality throughout. Enjoying a highly convenient position, the property is just a short walk from Risca High Street, where a wide range of shops and amenities can be found. Excellent transport links are also close by, including local train stations and major road connections.

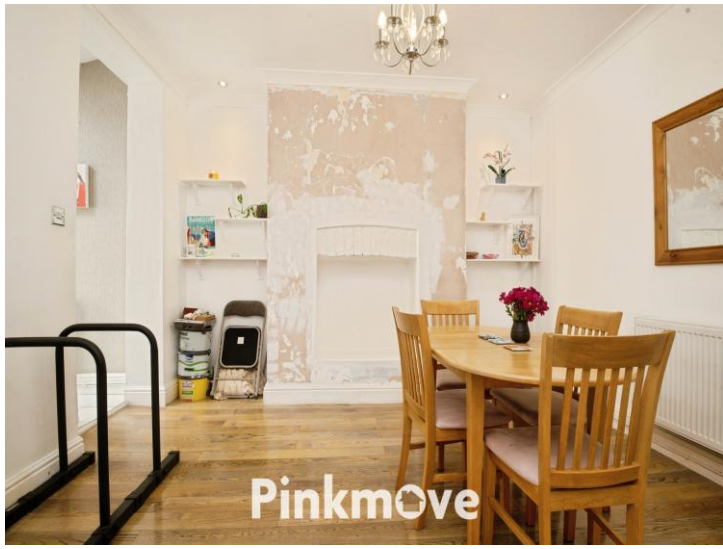
On the ground floor, the home features a spacious living room with a charming bay window, allowing natural light to flood the space and creating a warm, inviting atmosphere. A separate dining room provides flexibility for family meals, hosting, or home working. The modern kitchen is thoughtfully designed with ample storage and workspace, and from here you can access the contemporary family bathroom.

Upstairs, the property offers two double bedrooms—both benefiting from fitted wardrobes—alongside a versatile single bedroom that could serve as a nursery, office, or dressing room.

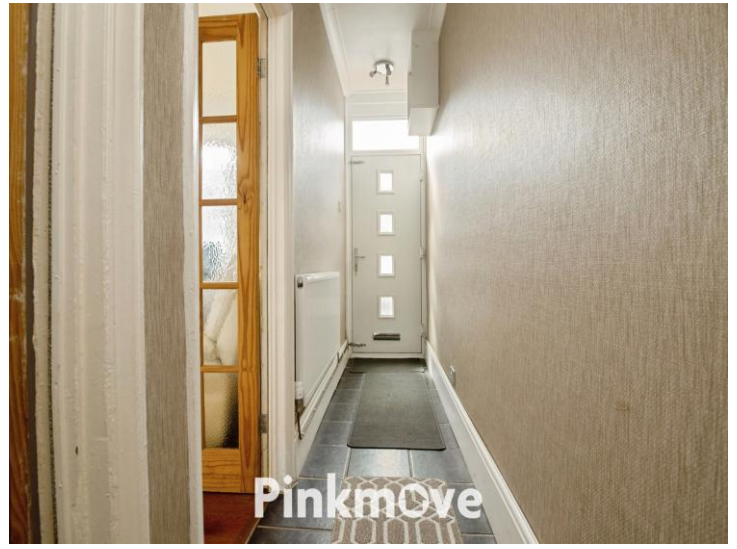
Externally, the home boasts a double garage, ideal for secure parking or additional storage, as well as a low-maintenance, enclosed rear garden that offers a private outdoor retreat perfect for relaxing or entertaining.

Combining practicality with everyday comfort, this property presents an appealing option for anyone seeking a well-kept home in a well-connected area. It provides a comfortable and well-balanced layout suited to a wide range of lifestyles.





Pinkmove



Pinkmove



Pinkmove



Pinkmove

Accommodation

Living Room

Dining Room

Kitchen

Bathroom

Bedroom 1

Bedroom 2

Bedroom 3

01633 746088

team@pinkmove.co.uk

Pinkmove

Floorplan



Total floor area 98.5 sq.m. (1,060 sq.ft.) approx

This floor plan is for illustrative purposes only. It is not drawn to scale. Any measurements, floor areas (including any total floor area), openings and orientation are approximate. No details are guaranteed, they cannot be relied upon for any purpose and they do not form part of any agreement. No liability is taken for any error, omission or misstatement. A party must rely upon its own inspection(s). Powered by www.focalagent.com

Pinkmove

Important Information

Note while we endeavour to make our sales details accurate and reliable, if there is any point which is of particular interest to you, please contact the office and we will be pleased to confirm the position for you. We have not personally tested any apparatus, equipment, fixtures, fittings or services and cannot verify they are in working order or fit for their purposes. Nothing in these particulars is intended to indicate that carpets or curtains, furnishings or fittings, electrical goods (whether wired or not). Gas fires or light fittings or any other fixtures not expressly included form part of the property offered for sale. This computer generated Floorplan, if applicable, is intended as a general guide to the layout and design of the property. It is not to scale and should not be relied upon for dimensions. Tenure: We cannot confirm the tenure of the property as we have not had access to the legal documents. The buyer is advised to obtain verification from their solicitor or surveyor.

Peter Alan Limited is registered in England and Wales under company number 2073153, Registered Office is Cumbria House, 16-20 Hockliffe Street, Leighton Buzzard, Bedfordshire, LU7 1GN. VAT Registration Number is 500 2481 05. For activities relating to regulated mortgages and non-investment insurance contracts, Peter Alan Limited is an appointed representative of Connells Limited which is authorised and regulated by the Financial Conduct Authority. Connells Limited's Financial Services Register number is 302221. Most buy-to-let

