



Woodchurch Road, Birkenhead, CH42 9LQ

welcome to

Woodchurch Road, Birkenhead

If you crave style without having to make the bold choices yourself this property is for you! Absolutely stunning throughout this spacious end-terraced house is truly just a joy to view, so what are you waiting for? Call to book your slot today!



Property Description

This stylish three-bedroom end-terraced home offers spacious and versatile living accommodation, perfectly suited to families or first-time buyers seeking a property where the work has already been done!

Upon entering, the property boasts a welcoming and well-proportioned lounge, complete with a charming fireplace feature, creating a warm and inviting focal point. A separate dining room provides further living space, ideal for entertaining or family meals.

The highlight of the home is the stunning kitchen, finished to a high standard with modern fittings, ample storage and workspace, making it both practical and visually impressive.

To the first floor, there are three excellent sized bedrooms as well as a useful upstairs utility room and a modern family bathroom complete with walk-in shower, free-standing bath, hidden mood lighting, in-built wall shelves and a floating sink unit.

This property truly stands out for its presentation, space and style as well as for how well it has been maintained. So often upon buying property the first few months are taken up by tedious maintenance work neglected by the previous owners, but in this property the owners have taken care of so many of those jobs, including rewiring, heating systems, fascias and gutters, doors, door handles and door frames - the list goes on! If you want to hear the rest or indeed see it for yourself give us a call to book a viewing today!

Lounge

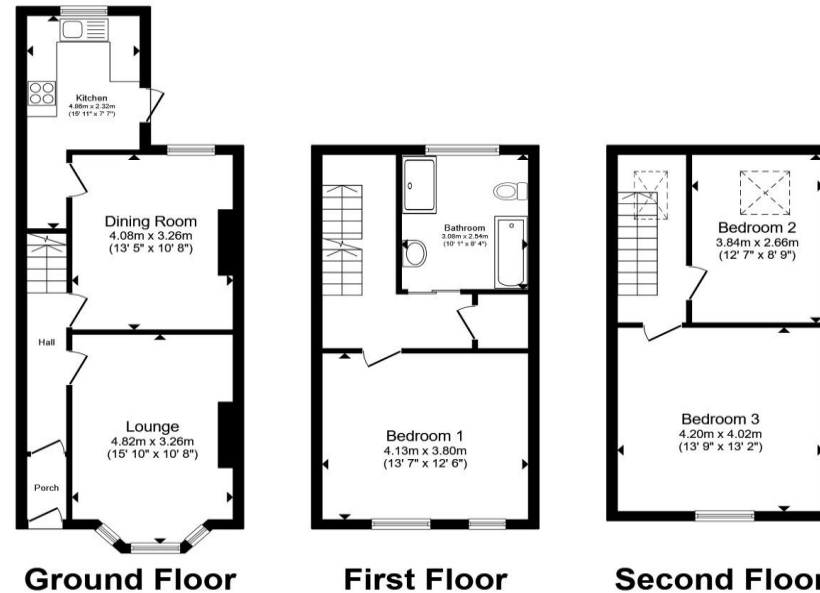
10' 8" x 16' 3" (3.25m x 4.95m)

Double-glazed bay window to the front, radiator and feature fireplace.

Dining Room

10' 7" x 13' 1" (3.23m x 3.99m)

Double-glazed window to the rear, radiator and feature fireplace.



Ground Floor

First Floor

Second Floor

Total floor area 110.4 m² (1,188 sq.ft.) approx

This floor plan is for illustrative purposes only. It is not drawn to scale. Any measurements, floor areas (including any total floor area), openings and orientation are approximate. No details are guaranteed, they cannot be relied upon for any purpose and they do not form part of any agreement. No liability is taken for any error, omission or misstatement. A party must rely upon its own inspection(s). Powered by www.propertybox.io



Kitchen

14' 3" x 7' 5" (4.34m x 2.26m)

fitted kitchen comprising wall and base cupboards, sink and drainer unit and complementary work surfaces. Electric oven, gas hob and central heating boiler. Double-glazed door giving access to the side.

First Floor Landing

Bedroom One

12' 8" x 14' 2" (3.86m x 4.32m)

Two double-glazed windows to the front and radiator.

Bathroom

Tiled bathroom with four-piece bathroom suite comprising freestanding bath with mixer taps, walk-in shower, WC and hand wash basin set within vanity area. Radiator and double-glazed window to the rear.

First Floor Utility Room

5' 1" x 3' 9" (1.55m x 1.14m)

Second Floor

Bedroom Two

13' x 14' 4" (3.96m x 4.37m)

Double-glazed window to the front and radiator.

Bedroom Three

8' 3" x 13' (2.51m x 3.96m)

With skylight and radiator.



view this property online jonesandchapman.co.uk/Property/PTN116473



welcome to

Woodchurch Road, Birkenhead

- Three-bedroom end terraced house
- Beautifully and stylishly presented throughout
- Spacious lounge with fireplace feature
- Separate dining room
- Stunning modern kitchen

Tenure: Freehold EPC Rating: E
Council Tax Band: A

£230,000



Please note the marker reflects the
postcode not the actual property

view this property online [jonesandchapman.co.uk/Property/PTN116473](https://www.jonesandchapman.co.uk/Property/PTN116473)



Property Ref:
PTN116473 - 0003

1. MONEY LAUNDERING REGULATIONS Intending purchasers will be asked to produce identification documentation at a later stage and we would ask for your co-operation in order that there is no delay in agreeing the sale. 2. These particulars do not constitute part or all of an offer or contract. 3. The measurements indicated are supplied for guidance only and as such must be considered incorrect. Potential buyers are advised to recheck measurements before committing to any expense. 4. We have not tested any apparatus, equipment, fixtures or services and it is in the buyers interest to check the working condition of any appliances. 5. Where an EPC, or a Home Report (Scotland only) is held for this property, it is available for inspection at the branch by appointment. If you require a printed version of a Home Report, you will need to pay a reasonable production charge reflecting printing and other costs. 6. We are not able to offer an opinion either written or verbal on the content of these reports and this must be obtained from your legal representative. 7. Whilst we take care in preparing these reports, a buyer should ensure that his/her legal representative confirms as soon as possible all matters relating to title including the extent and boundaries of the property and other important matters before exchange of contracts.

Jones & Chapman is a trading name of Sequence (UK) Limited which is registered in England and Wales under company number 4268443, Registered Office is Cumbria House, 16-20 Hockliffe Street, Leighton Buzzard, Bedfordshire, LU7 1GN. VAT Registration Number is 500 2481 05.

 jones & chapman



0151 608 2287



Prenton@jonesandchapman.co.uk



349 Woodchurch Road, Prenton, PRENTON,
Merseyside, CH42 8PE



[jonesandchapman.co.uk](https://www.jonesandchapman.co.uk)