



St. Martins Road, Eastbourne BN22 0LG



welcome to

St. Martins Road, Eastbourne

A modern three-bedroom townhouse in the popular Lower Willingdon area, arranged over three floors. Features include an open-plan kitchen/dining room, lounge, cloakroom, two bedrooms and family bathroom, plus a top-floor master with en-suite. Benefits from off-road parking and a large rear garden.



Entrance Porch

Lounge

Double glazed window to the front and side aspect. Cupboard. Radiator.

Open Plan Kitchen/ Dining Room

A range of wall and base units with work top over incorporating a stainless steel sink and drainer unit. Eye level oven with gas hob and cooker hood above. Cupboard containing boiler. Space and plumbing for washing machine and dish washer. Radiator. Space for fridge / freezer. Double glazed window and patio doors to the rear aspect.

Cloakroom

Low level W.C. Wash hand basin.

First Floor Landing

Stairs leading from ground floor to first floor landing.

Bedroom 2

Double glazed window to the rear aspect. Built in wardrobes. Radiator.

Bedroom 3

Double glazed window to the front aspect. Radiator.

Bathroom

Comprising a bath with mixer taps and over head shower attachment. Low level W.C. Wash hand basin with vanity unit below. Heated towel rail. Double glazed window to the rear aspect.

Second Floor Landing

Stairs leading from first floor to second floor.

Bedroom 1

Double glazed window to the front aspect. Two Velux windows. Radiator.

En - Suite

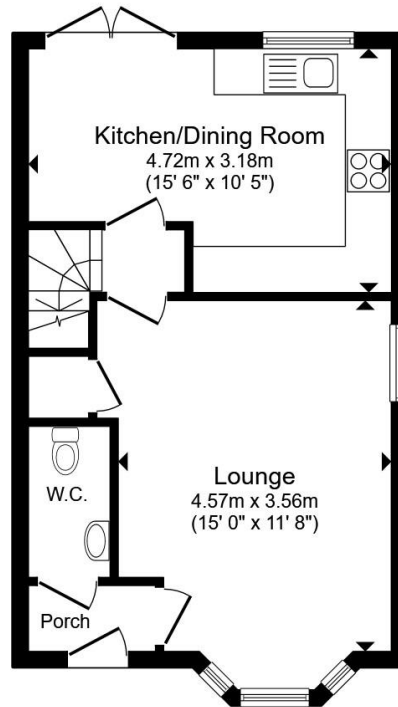
Comprising a shower cubicle with over head shower attachment. Low level W.C. Wash hand basin with vanity unit below. Heated towel rail. Velux window.

Rear Garden

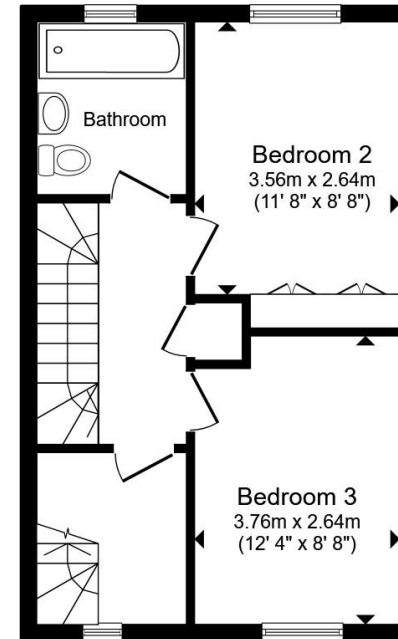
Patio area leading to an area mainly laid to lawn. Garden shed. Fence surround.

Off Street Parking

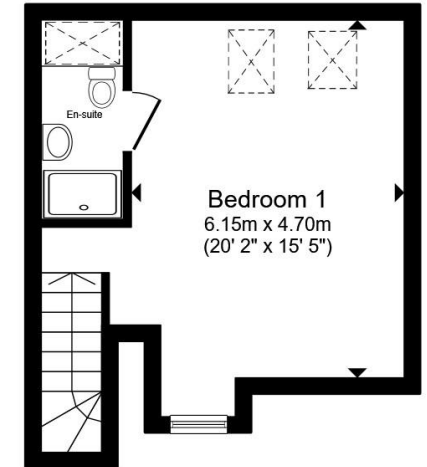
Driveway to the front of the property.



Ground Floor



First Floor



Second Floor

Total floor area 97.6 m² (1,051 sq.ft.) approx

This floor plan is for illustrative purposes only. It is not drawn to scale. Any measurements, floor areas (including any total floor area), openings and orientation are approximate. No details are guaranteed, they cannot be relied upon for any purpose and they do not form part of any agreement. No liability is taken for any error, omission or misstatement. A party must rely upon its own inspection(s). Powered by www.propertybox.io

 fox & sons



view this property online fox-and-sons.co.uk/Property/EBN121005



welcome to

St. Martins Road, Eastbourne

- THREE BEDROOM TOWNHOUSE
- LOWER WILLINGDON LOCATION
- OPEN-PLAN KITCHEN/DINING ROOM
- SPACIOUS LOUNGE
- GROUND FLOOR CLOAKROOM

Tenure: Freehold EPC Rating: B

Council Tax Band: D

£370,000



Please note the marker reflects the postcode not the actual property

view this property online fox-and-sons.co.uk/Property/EBN121005



Property Ref:
EBN121005 - 0002

1. MONEY LAUNDERING REGULATIONS Intending purchasers will be asked to produce identification documentation at a later stage and we would ask for your co-operation in order that there is no delay in agreeing the sale. 2. These particulars do not constitute part or all of an offer or contract. 3. The measurements indicated are supplied for guidance only and as such must be considered incorrect. Potential buyers are advised to recheck measurements before committing to any expense. 4. We have not tested any apparatus, equipment, fixtures or services and it is in the buyers interest to check the working condition of any appliances. 5. Where an EPC, or a Home Report (Scotland only) is held for this property, it is available for inspection at the branch by appointment. If you require a printed version of a Home Report, you will need to pay a reasonable production charge reflecting printing and other costs. 6. We are not able to offer an opinion either written or verbal on the content of these reports and this must be obtained from your legal representative. 7. Whilst we take care in preparing these reports, a buyer should ensure that his/her legal representative confirms as soon as possible all matters relating to title including the extent and boundaries of the property and other important matters before exchange of contracts.

Fox & Sons is a trading name of Sequence (UK) Limited which is registered in England and Wales under company number 4268443, Registered Office is Cumbria House, 16-20 Hockliffe Street, Leighton Buzzard, Bedfordshire, LU7 1GN. VAT Registration Number is 500 2481 05.


fox & sons



01323 410911



Eastbourne@fox-and-sons.co.uk



19 Cornfield Road, EASTBOURNE, East Sussex,
BN21 4QD



fox-and-sons.co.uk