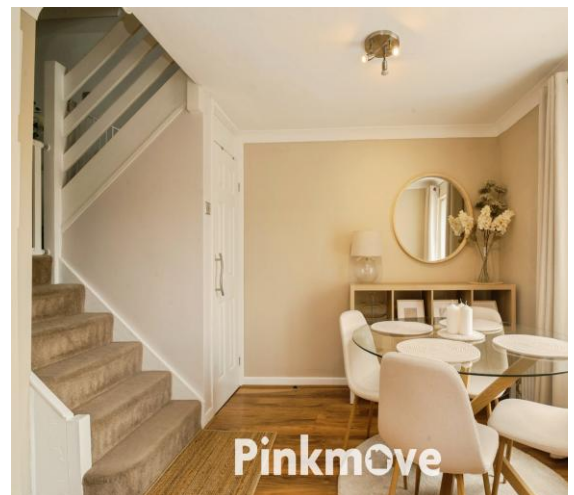




Tern Court

Offers in the region of £185,000

- Driveway providing off-road parking
- Three bedrooms
- Open-plan dining area
- Ideal for first-time buyers or families
- Spacious lounge
- Modern fitted kitchen
- EPC Rating: C



 3  1  1

Pinkmove

01633 746088
team@pinkmove.co.uk



About the property

Located in a popular residential area, the property benefits from off-road parking and a thoughtful layout throughout.

Upon entering, a welcoming hallway leads to a generous lounge at the front, providing a comfortable space for relaxing or entertaining.

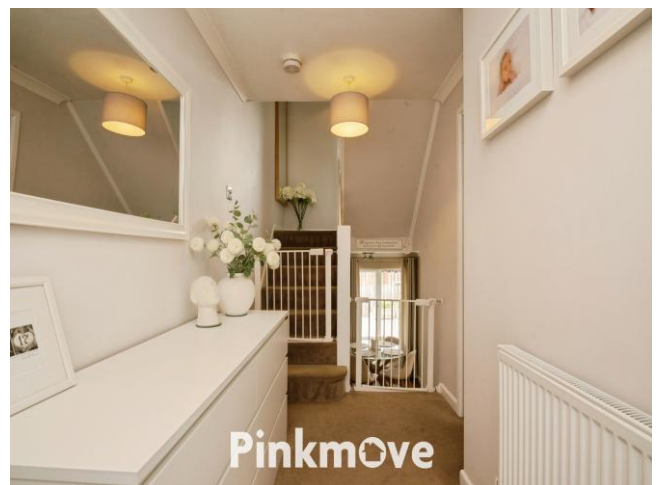
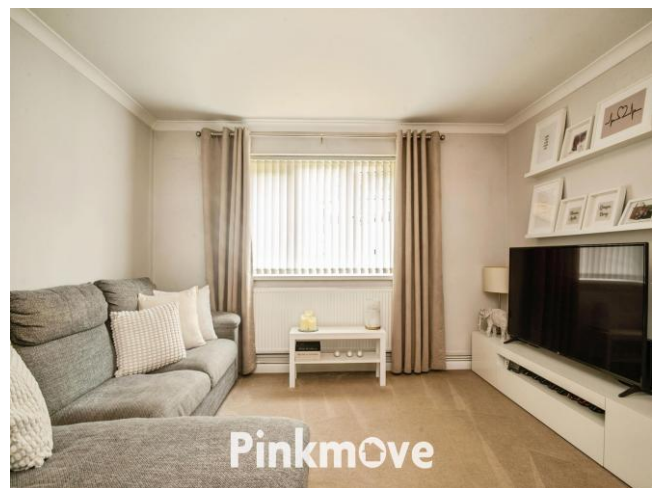
To the rear, the property boasts a modern open-plan kitchen and dining area, fitted with contemporary units and ample worktop space, with plenty of room for a family dining table and access to the rear garden.

Upstairs, the landing leads to three well-proportioned bedrooms, including a spacious principal double bedroom, alongside two further rooms suitable for children, guests or home office use.

A modern family bathroom completes the first floor.

Externally, the property features a driveway to the front offering convenient off-road parking, along with a lawned area and pathway to the entrance, while the rear provides additional outdoor space perfect for relaxation or entertaining.

This is a superb opportunity to acquire a ready-to-move-into home, and early viewing is highly recommended.

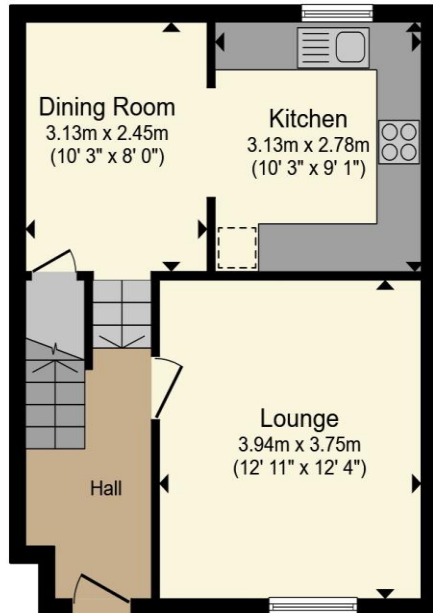




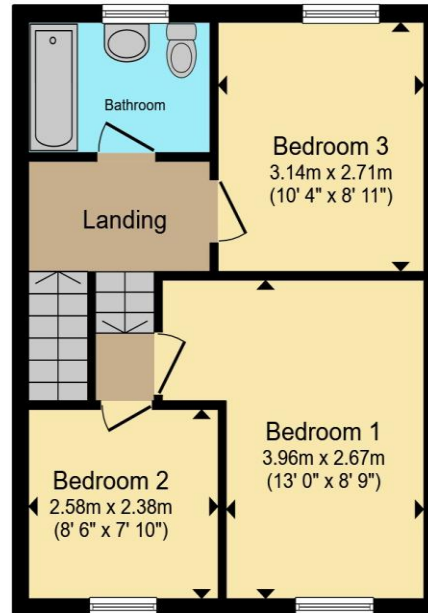
Accommodation

- Lounge
- Dining Room
- Kitchen
- Bedroom 1
- Bedroom 2
- Bedroom 3
- Bathroom

Floorplan



Ground Floor



First Floor

Total floor area 76.8 sq.m. (827 sq.ft.) approx

This floor plan is for illustrative purposes only. It is not drawn to scale. Any measurements, floor areas (including any total floor area), openings and orientation are approximate. No details are guaranteed, they cannot be relied upon for any purpose and they do not form part of any agreement. No liability is taken for any error, omission or misstatement. A party must rely upon its own inspection(s). Powered by www.focalagent.com

Pinkmove

Important Information

Note while we endeavour to make our sales details accurate and reliable, if there is any point which is of particular interest to you, please contact the office and we will be pleased to confirm the position for you. We have not personally tested any apparatus, equipment, fixtures, fittings or services and cannot verify they are in working order or fit for their purposes. Nothing in these particulars is intended to indicate that carpets or curtains, furnishings or fittings, electrical goods (whether wired or not). Gas fires or light fittings or any other fixtures not expressly included form part of the property offered for sale. This computer generated Floorplan, if applicable, is intended as a general guide to the layout and design of the property. It is not to scale and should not be relied upon for dimensions. Tenure: We cannot confirm the tenure of the property as we have not had access to the legal documents. The buyer is advised to obtain verification from their solicitor or surveyor.

Peter Alan Limited is registered in England and Wales under company number 2073153. Registered Office is Cumbria House, 16-20 Hockliffe Street, Leighton Buzzard, Bedfordshire, LU7 1GN. VAT Registration Number is 500 2481 05. For activities relating to regulated mortgages and non-investment insurance contracts, Peter Alan Limited is an appointed representative of Connells Limited which is authorised and regulated by the Financial Conduct Authority. Connells Limited's Financial Services Register number is 302221. Most buy-to-let

