



Stanley Avenue, CAMBRIDGE  
**£475,000 Freehold**

**Sharman  
Quinney**

# Key Features



- Four-bedroom town house
- Separate living room
- Three storey living
- Two en-suite shower rooms to bedroom one and two
- Additional bathroom on second floor and ground floor wc

The ground floor opens into a bright and welcoming living room positioned at the front of the home, providing scope for a range of layouts. Moving through the hallway, you enter the full length kitchen, including a four-ring gas hob, single oven, dishwasher and washing. This space can accommodate a dining table while still offering generous storage and preparation space, whilst providing access to the rear garden with the patio doors. A conveniently located W.C. completes this level, adding practicality for guests and day to day use.

The first floor is dedicated to two well proportioned bedrooms and a private en suite shower room, offering an excellent arrangement for children, guests or home working. The larger bedroom on this level provides a bright and comfortable space with room for wardrobes, desks



or additional furniture.

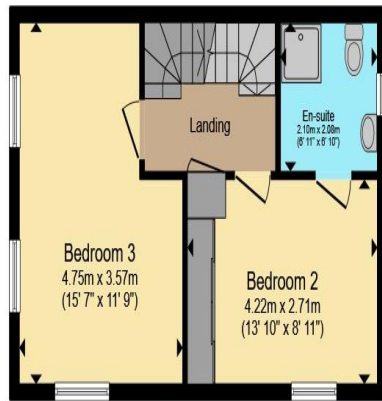
The second floor offers two doubles bedrooms. The principal bedroom benefits from its own modern en suite, creating a comfortable and private space. A second double bedroom sits alongside it, ideal for guests, older children or a home office. A separate family bathroom completes this level, making the top floor a practical and self contained space. Orchard Park is a modern and well-connected neighbourhood in North Cambridge, benefitting from excellent transport links via the A14, guided busway and dedicated cycle routes creating convenient access to the Cambridge Science Park, Cambridge North station and further into the city. This property represents an excellent opportunity for anyone seeking a comfortable family home, while also offering strong potential to be converted into an appealing investment, thanks to its generous layout and well separated floors.

All measurements are stated on the floorplan

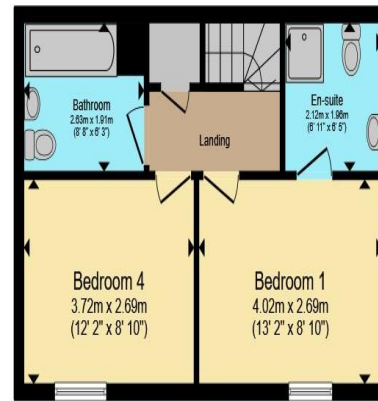




**Ground Floor**



**First Floor**



**Second Floor**

Total floor area 111.3 m<sup>2</sup> (1,198 sq.ft.) approx

This floor plan is for illustrative purposes only. It is not drawn to scale. Any measurements, floor areas (including any total floor area), openings and orientation are approximate. No details are guaranteed, they cannot be relied upon for any purpose and they do not form part of any agreement. No liability is taken for any error, omission or misstatement. A party must rely upon its own inspection(s). Powered by [www.propertybox.io](http://www.propertybox.io)

**Sharman  
Quinney**

To view this property call Sharman Quinney on:  
**01223 426139**

# Selling your property?

Contact us to arrange a **FREE** home valuation.

 01223 426139

 Unit 5 Orchard House Unwin Square, Orchard Park, CAMBRIDGE, Cambridgeshire, CB4 2AD

 orchardpark@sharmanquinney.co.uk

 [www.sharmanquinney.co.uk](http://www.sharmanquinney.co.uk)



 SCAN ME



Sharman Quinney Holdings Limited is registered in England and Wales under company number 4174227, Registered Office is Cumbria House, 16-20 Hockliffe Street, Leighton Buzzard, Bedfordshire, LU7 1GN. VAT Registration Number is 500 2481 05.

1: These particulars do not constitute part or all of an offer or contract. 2: The measurements indicated are supplied for guidance only and as such must be considered incorrect. 3: Potential buyers are advised to recheck the measurements before committing to any expense. 4: Sharman Quinney has not tested any apparatus, equipment, fixtures, fittings or services and it is the buyers interests to check the working condition of any appliances. 5: Sharman Quinney has not sought to verify the legal title of the property and buyers must obtain verification from their legal representative. 6: Intending purchasers will be asked to produce identification documentation at a later stage and we would ask your co-operation in order that there will be no delay in agreeing the sale. Ref: ORP102334 - 0006

