



Grove Court, Leeds LS6 4AE

welcome to

Grove Court, Leeds

A practical 1 bedroom flat featuring a light-filled lounge, generous hallway, and a fitted kitchen with essential appliances. Includes a comfortable double bedroom with built-in storage and a modern bathroom. Also benefits from shared gardens, parking, and a garage.

Entrance Hall

Entrance hall with laminate flooring and access to the electric box.

Lounge

Spacious lounge with laminate flooring, front-facing window providing natural light, and a radiator.

Kitchen

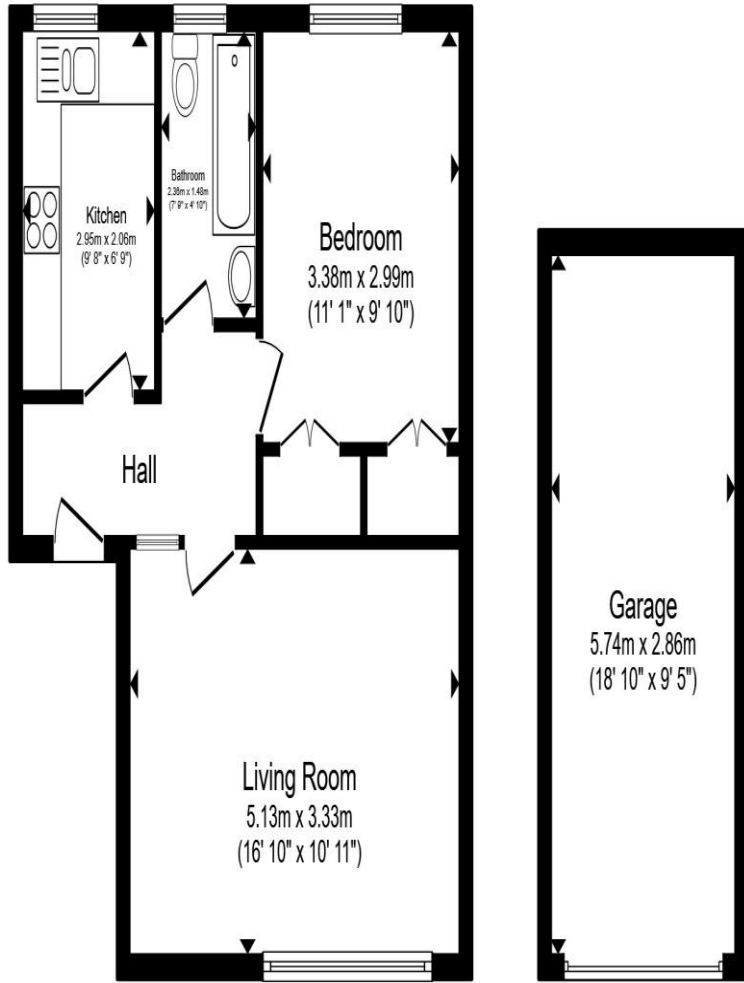
Kitchen with laminate flooring, shaker-style units, laminate worktops, rear window, and radiator. Includes oven, four-ring gas hob, freestanding appliances, boiler, and part-tiled walls.

Bedroom

Bedroom with laminate flooring, rear window, radiator, built-in wardrobes, and space for freestanding furniture and a double bed.

Bathroom

Bathroom with laminate flooring, pedestal sink, WC, and panel bath with shower over. Rear window, radiator, extractor fan, metro tiling to shower and part walls, with one wall featuring half wooden panelling.



Floor Plan 1

Garage

Total floor area 62.2 m² (670 sq.ft.) approx

This floor plan is for illustrative purposes only. It is not drawn to scale. Any measurements, floor areas (including any total floor area), openings and orientation are approximate. No details are guaranteed, they cannot be relied upon for any purpose and they do not form part of any agreement. No liability is taken for any error, omission or misstatement. A party must rely upon its own inspection(s). Powered by www.propertybox.io



welcome to Grove Court, Leeds

- Spacious one-bedroom flat
- Double bedroom with built in storage
- Laminate flooring throughout
- Shared garden space
- Garage and parking available

Tenure: Leasehold EPC Rating: D

Council Tax Band: A Service Charge: 932.46

Ground Rent: 932.46

This is a Leasehold property. We are awaiting further details about the Term of the lease. For further information please contact the branch. Please note additional fees could be incurred for items such as Leasehold packs.

fixed price

£120,000



check out more properties at williamhbrown.co.uk



Property Ref:
HEA109798 - 0007

1. MONEY LAUNDERING REGULATIONS Intending purchasers will be asked to produce identification documentation at a later stage and we would ask for your co-operation in order that there is no delay in agreeing the sale. 2. These particulars do not constitute part or all of an offer or contract. 3. The measurements indicated are supplied for guidance only and as such must be considered incorrect. Potential buyers are advised to recheck measurements before committing to any expense. 4. We have not tested any apparatus, equipment, fixtures or services and it is in the buyers interest to check the working condition of any appliances. 5. Where an EPC, or a Home Report (Scotland only) is held for this property, it is available for inspection at the branch by appointment. If you require a printed version of a Home Report, you will need to pay a reasonable production charge reflecting printing and other costs. 6. We are not able to offer an opinion either written or verbal on the content of these reports and this must be obtained from your legal representative. 7. Whilst we take care in preparing these reports, a buyer should ensure that his/her legal representative confirms as soon as possible all matters relating to title including the extent and boundaries of the property and other important matters before exchange of contracts.

William H Brown is a trading name of Sequence (UK) Limited which is registered in England and Wales under company number 4268443, Registered Office is Cumbria House, 16-20 Hockliffe Street, Leighton Buzzard, Bedfordshire, LU7 1GN. VAT Registration Number is 500 2481 05.

Not for marketing purposes INTERNAL USE ONLY



0113 278 5337



Headingley@williamhbrown.co.uk



1a Arndale Centre, Otley Road, LEEDS, West
Yorkshire, LS6 2UE



williamhbrown.co.uk