

31 Oldfield, Clevedon, BS21 5DQ

£795 Per Calendar Month

marktemples

RESIDENTIAL LETTINGS





PROPERTY TYPE

Flat



LOCATION

Lower Clevedon



BEDROOMS

1



RECEPTION ROOMS

1



BATHROOMS

1



WARMTH

Electric Heating



PARKING

One allocated space



OUTSIDE SPACE

None here



EPC RATING

D



COUNCIL TAX BAND

A



One Bedroom Apartment  
Top floor, within Oldfield  
Holding deposit - £183.46  
Security deposit - £917.30  
EPC Rating - D  
Council tax band - A

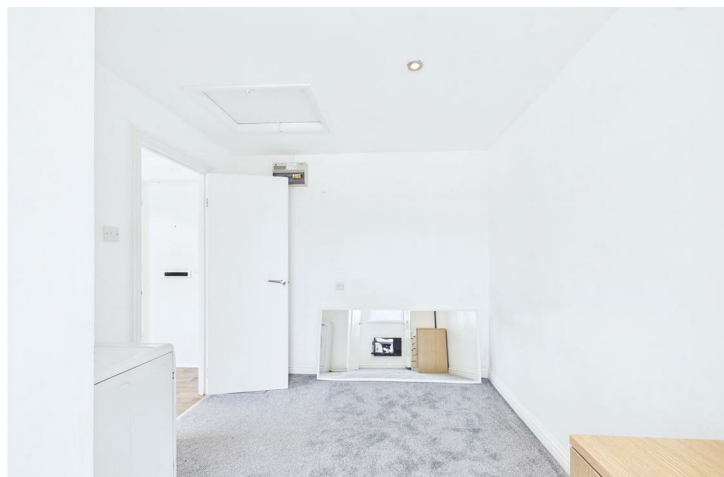
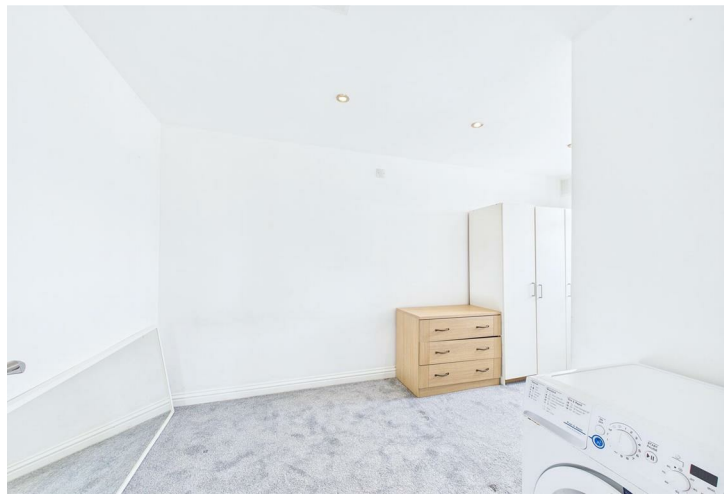
## What will it cost to rent this property?

When you submit a completed application form, we will discuss the details with the Landlord. If the Landlord is happy to proceed you will be required to pay:

1. Holding deposit, equivalent to 1 week's rent. This will reserve the property.

Once references are complete, you will be asked to pay:

2. First month's rent
3. Security deposit, equivalent to 5 weeks' rent (for rents under £50,000 per year). This covers damages or defaults on the part of the tenant during the tenancy.



Open plan living/kitchen area with fridge freezer and cooker/hob included  
Bedroom with space for a double bed and wardrobe storage, along with washing machine

Bathroom comprising shower and toilet  
Ideally located close to Clevedon riverbank and within easy walking distance of Clevedon town centre and local amenities

Available From:

This property is available to move into from approximately 5th June 2026



### Utilities

Mains water and drainage, Mains electric supply, Electric heating. This information has been provided by the Landlord and is correct to the best of our knowledge

### Broadband

Ultrafast broadband available with highest available download speed 1000 Mbps and highest available upload speed 100 Mbps. This information is sourced via [checker.ofcom.org.uk](https://checker.ofcom.org.uk), we advise you make your own enquires

### Mobile phone signal/coverage

You are likely to have coverage indoor and outside the property with a range of providers. This information is sourced via [checker.ofcom.org.uk](https://checker.ofcom.org.uk), we advise you make your own enquires

For the latest properties and local news follow Mark Templer Residential Lettings on:



