



Metcalf Road, Rackheath, Norwich, NR13 6UE

welcome to

Metcalfe Road, Rackheath, Norwich

Offered with the advantage of no onward chain, this impeccably presented four-bedroom townhouse is situated in the desirable village of Rackheath. Spanning three light-filled storeys and benefiting from the remainder of an NHBC warranty.



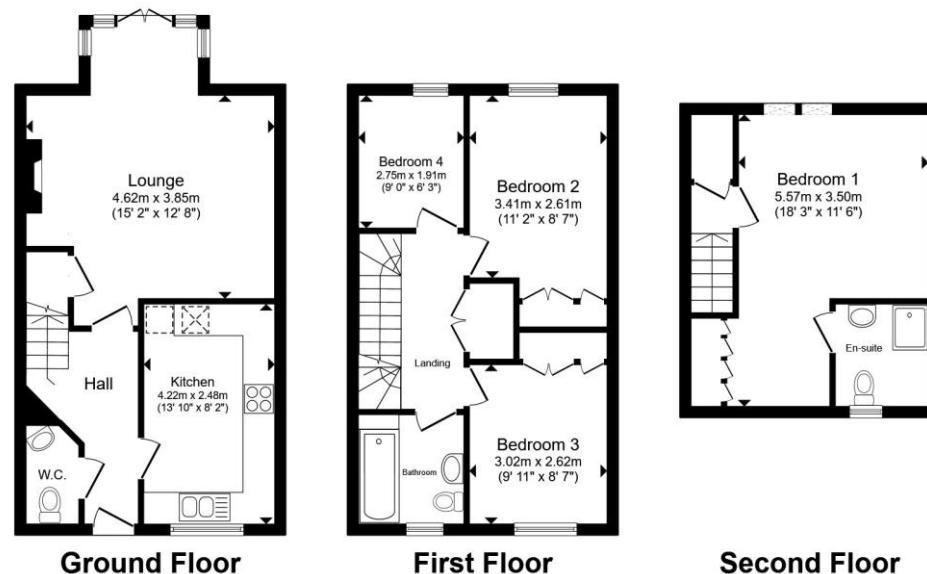
Description

Welcome to this stunning, modern family residence located in the heart of the popular village of Rackheath. Boasting a high-specification finish throughout, this fantastically presented townhouse provides generous, well-proportioned accommodation that is ready for immediate occupation.

Upon entering, you are greeted by an inviting entrance hall featuring stylish wood-effect flooring and a convenient ground floor W.C. The heart of the home is the rear-facing living room, which is flooded with natural light via a bay window and French doors that lead into the garden. This sophisticated space features a bespoke media wall with integrated shelving and an inset electric fire, creating the perfect atmosphere for relaxation. The ground floor is completed by a sleek, modern kitchen equipped with high-gloss cabinetry and premium integrated appliances.

The first floor hosts three well-proportioned bedrooms—including two generous doubles—all featuring built-in storage, and is served by a luxurious, contemporary family bathroom. The second floor offers a private sanctuary: an expansive principal suite. This impressive space features large Velux windows, ample built-in wardrobes, and a private en-suite shower room.

Externally, the property continues to impress with a generous, fully enclosed garden featuring a neat lawn and a raised decking area ideal for al-fresco dining. To the side, a private driveway provides convenient off-road parking.



Total floor area 104.0 m² (1,119 sq.ft.) approx

This floor plan is for illustrative purposes only. It is not drawn to scale. Any measurements, floor areas (including any total floor area), openings and orientation are approximate. No details are guaranteed, they cannot be relied upon for any purpose and they do not form part of any agreement. No liability is taken for any error, omission or misstatement. A party must rely upon its own inspection(s). Powered by www.propertybox.io


william
h brown



view this property online williamhbrown.co.uk/Property/NOR143361



welcome to

Metcalfe Road, Rackheath, Norwich

- Expansive second-floor principal suite with an en-suite.
- Stylish kitchen with integrated appliances and a feature media wall in the lounge
- Situated in the highly sought-after village of Rackheath.
- Private driveway offering dedicated off-road parking.
- Enclosed rear garden with lawn and decking area.

Tenure: Freehold EPC Rating: B

Council Tax Band: D

offers in excess of

£325,000



Please note the marker reflects the postcode not the actual property

view this property online [williamhbrown.co.uk/Property/NOR143361](https://www.williamhbrown.co.uk/Property/NOR143361)



Property Ref:
NOR143361 - 0002

1. MONEY LAUNDERING REGULATIONS Intending purchasers will be asked to produce identification documentation at a later stage and we would ask for your co-operation in order that there is no delay in agreeing the sale. 2. These particulars do not constitute part or all of an offer or contract. 3. The measurements indicated are supplied for guidance only and as such must be considered incorrect. Potential buyers are advised to recheck measurements before committing to any expense. 4. We have not tested any apparatus, equipment, fixtures or services and it is in the buyers interest to check the working condition of any appliances. 5. Where an EPC, or a Home Report (Scotland only) is held for this property, it is available for inspection at the branch by appointment. If you require a printed version of a Home Report, you will need to pay a reasonable production charge reflecting printing and other costs. 6. We are not able to offer an opinion either written or verbal on the content of these reports and this must be obtained from your legal representative. 7. Whilst we take care in preparing these reports, a buyer should ensure that his/her legal representative confirms as soon as possible all matters relating to title including the extent and boundaries of the property and other important matters before exchange of contracts.

William H Brown is a trading name of Sequence (UK) Limited which is registered in England and Wales under company number 4268443, Registered Office is Cumbria House, 16-20 Hockliffe Street, Leighton Buzzard, Bedfordshire, LU7 1GN. VAT Registration Number is 500 2481 05.



william h brown



01603 760044



norwich@williamhbrown.co.uk



5 Bank Plain, NORWICH, Norfolk, NR2 4SF



[williamhbrown.co.uk](https://www.williamhbrown.co.uk)