



Sunnycroft, £270,000

- SEMI DETACHED BUNGALOW
- 2 DOUBLE BEDROOMS
- PRIVATE GARDEN
- GARAGE AND DRIVEWAY FOR MULTIPLE VEHICLES
- SUMMER HOUSE
- IDEAL FOR COMMUTING
- EPC Rating: C
- Council Tax: D



 2  1  1



About the property

We are delighted to present this beautifully presented two-bedroom semi-detached bungalow, ideally situated in the highly sought-after area of Portskewett. Nestled within a peaceful and desirable residential cul de sac, this property offers modern, versatile living all on one level. Thoughtfully designed and tastefully updated by the current owners, the home welcomes you with a bright and spacious entrance hallway leading into the main living area. The living room is filled with natural light and features uPVC sliding doors that open directly onto the well-maintained, south facing rear garden - perfect for seamlessly blending indoor and outdoor living and offers plenty of space to enjoy indoor relaxation and dining too!

The property boasts two generously sized bedrooms, alongside a contemporary, fully fitted kitchen and a stylish, spacious shower room and w.c.

Further benefits include a detached single garage and private driveway suitable for multiple vehicles. Externally the home continues to impress with beautifully landscaped gardens, a charming patio dining area and a delightful summer house, perfect for entertaining or relaxing.

Portskewett is a charming village, ideally located near the Severn bridge and within easy reach of Chepstow, Caldicot and Bristol. Rich in history, the village dates back to Norman times and sits beside the scenic Severn Estuary. Today, it offers a peaceful, rural setting with attractive countryside, making it a popular choice for commuters.





Accommodation

Kitchen

10' 2" x 7' 9" (3.10m x 2.36m)

Living/Dinning Room

18' 4" x 12' 5" (5.59m x 3.78m)

Bedroom 1

11' 1" x 9' 9" (3.38m x 2.97m)

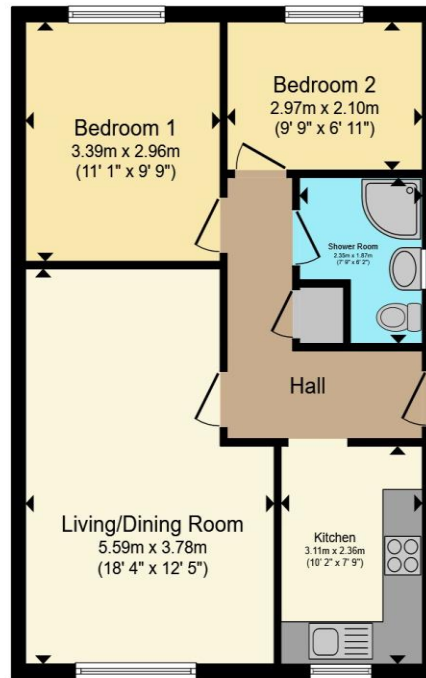
Bedroom 2

9' 9" x 6' 11" (2.97m x 2.11m)

Shower Room

7' 9" x 6' 2" (2.36m x 1.88m)

Floorplan



Total floor area 54.7 m² (589 sq.ft.) approx

This floor plan is for illustrative purposes only. It is not drawn to scale. Any measurements, floor areas (including any total floor area), openings and orientation are approximate. No details are guaranteed, they cannot be relied upon for any purpose and they do not form part of any agreement. No liability is taken for any error, omission or misstatement. A party must rely upon its own inspection(s). Powered by www.propertybox.io

Important Information

Note while we endeavour to make our sales details accurate and reliable, if there is any point which is of particular interest to you, please contact the office and we will be pleased to confirm the position for you. We have not personally tested any apparatus, equipment, fixtures, fittings or services and cannot verify they are in working order or fit for their purposes. Nothing in these particulars is intended to indicate that carpets or curtains, furnishings or fittings, electrical goods (whether wired or not). Gas fires or light fittings or any other fixtures not expressly included form part of the property offered for sale. This computer generated Floorplan, if applicable, is intended as a general guide to the layout and design of the property. It is not to scale and should not be relied upon for dimensions. Tenure: We cannot confirm the tenure of the property as we have not had access to the legal documents. The buyer is advised to obtain verification from their solicitor or surveyor.