



Cowslip Cottage, Shalford Green, Shalford, Braintree, CM7 5AY

welcome to

Cowslip Cottage, Shalford Green, Shalford, Braintree

Nestled into the far-reaching countryside in the idyllic and peaceful hamlet of Shalford Green, Cowslip is a beautifully refurbished and thoughtfully extended three-bedroom detached country home, offering the perfect blend of modern living and rural charm.



Entrance Hall

Double glazed window to multiple aspects. Stairs to first floor. Doors leading:-

Lounge

11' 11" x 11' 2" (3.63m x 3.40m)

Double glazed window to multiple aspect. Wall mounted electric heater.

Lounge / Dining Room

20' 4" max x 11' 2" max (6.20m max x 3.40m max)

Double glazed windows to multiple aspects. Double glazed French doors to garden. Feature fireplace with inset wood burning stove. Wall mounted electric heater. Opening to:-

Kitchen

9' 4" max x 20' 8" max (2.84m max x 6.30m max)

Double glazed window to rear aspect. Range of matching base and eye level unit with work surface over incorporating and inset sink drainer with hot and cold mixer tap. Space for Range cooker, American style fridge freezer, dishwasher, washing matching and tumble dryer. Tiled flooring, Part tiled walls. Double glazed door to side aspect.

Bedroom Three

9' 2" max x 8' 6" max (2.79m max x 2.59m max)

Double glazed window to multiple aspects. Wall mounted electric heater.

Shower Room

5' 7" max x 9' 2" max (1.70m max x 2.79m max)

Walk in shower with glass enclosure. Hand wash basin. Low level WC. Part tiled walls. Tiled flooring. Extractor fan.

Landing

Doors leading to:-

Bedroom One

11' 11" x 11' 2" (3.63m x 3.40m)

Double glazed window to rear aspect. Wall mounted electric heater.

Bedroom Two

14' 8" max x 8' 6" max (4.47m max x 2.59m max)

Double glazed window to front aspect. Wall mounted electric heater. Restricted head height.

Dressing Room

8' 9" x 4' 4" (2.67m x 1.32m)

Double glazed window to side aspect. Built in wardrobes with shelving.

Bathroom

7' 7" x 5' 11" (2.31m x 1.80m)

Obscure double glazed window side. Freestanding bath with hot and cold mixer tap with shower attachment. Hand wash basin with vanity unit. Heated towel rail. Wood effect flooring. Wall mounted double vanity cupboard.

Detached Barn

To the side of the property is a detached barn with double doors, power and lighting.

Driveway

To the side of the property is a shingle driveway, additional driveway parking to the opposite side of the barn.

Gardens

To the rear of the property is a shingle seating area leading to the remainder lawn with a circular shingle pathway leading to and enclosed vegetable garden. To the side of the property is an additional shingle patio area leading to the remainder lawn with raised flower beds, low level flower beds and a variety of trees. To the front of the property is a well stocked flower garden with topiary hedging and a paved pathway leading to the front door. Side access is granted via a timber gate.



view this property online williamhbrown.co.uk/Property/BTR110364



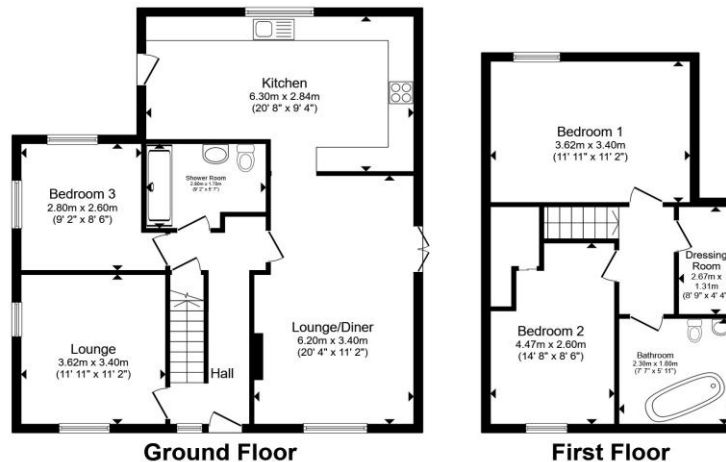
welcome to

Cowslip Cottage Shalford Green, Shalford Braintree

- Three Double Bedrooms
- Detached Country House
- Detached Barn
- Family Bathroom & Shower Room
- Open Plan Lounge / Kitchen / Diner

Tenure: Freehold EPC Rating: E

Council Tax Band: D



offers over
£500,000

Total floor area 131.8 m² (1,419 sq.ft.) approx

This floor plan is for illustrative purposes only. It is not drawn to scale. Any measurements, floor areas (including any total floor area), openings and orientation are approximate. No details are guaranteed, they cannot be relied upon for any purpose and they do not form part of any agreement. No liability is taken for any error, omission or misstatement. A party must rely upon its own inspection(s). Powered by www.propertybox.io



view this property online [williamhbrown.co.uk/Property/BTR110364](https://www.williamhbrown.co.uk/Property/BTR110364)

Please note the marker reflects the postcode not the actual property



Property Ref:
BTR110364 - 0002

1. MONEY LAUNDERING REGULATIONS Intending purchasers will be asked to produce identification documentation at a later stage and we would ask for your co-operation in order that there is no delay in agreeing the sale. 2. These particulars do not constitute part or all of an offer or contract. 3. The measurements indicated are supplied for guidance only and as such must be considered incorrect. Potential buyers are advised to recheck measurements before committing to any expense. 4. We have not tested any apparatus, equipment, fixtures or services and it is in the buyers interest to check the working condition of any appliances. 5. Where an EPC, or a Home Report (Scotland only) is held for this property, it is available for inspection at the branch by appointment. If you require a printed version of a Home Report, you will need to pay a reasonable production charge reflecting printing and other costs. 6. We are not able to offer an opinion either written or verbal on the content of these reports and this must be obtained from your legal representative. 7. Whilst we take care in preparing these reports, a buyer should ensure that his/her legal representative confirms as soon as possible all matters relating to title including the extent and boundaries of the property and other important matters before exchange of contracts.

William H Brown is a trading name of Sequence (UK) Limited which is registered in England and Wales under company number 4268443, Registered Office is Cumbria House, 16-20 Hockliffe Street, Leighton Buzzard, Bedfordshire, LU7 1GN. VAT Registration Number is 500 2481 05.

william h brown



01376 320018



braintree@williamhbrown.co.uk



51-53 High Street, BRAINTREE, Essex, CM7 1JX



[williamhbrown.co.uk](https://www.williamhbrown.co.uk)