



Blenheim Gardens, NW2

£1,650 Per Month

AVAILABLE TO LET is this well presented one bedroom Top Floor Flat, situated within a Edwardian property in the heart of Willesden Green.

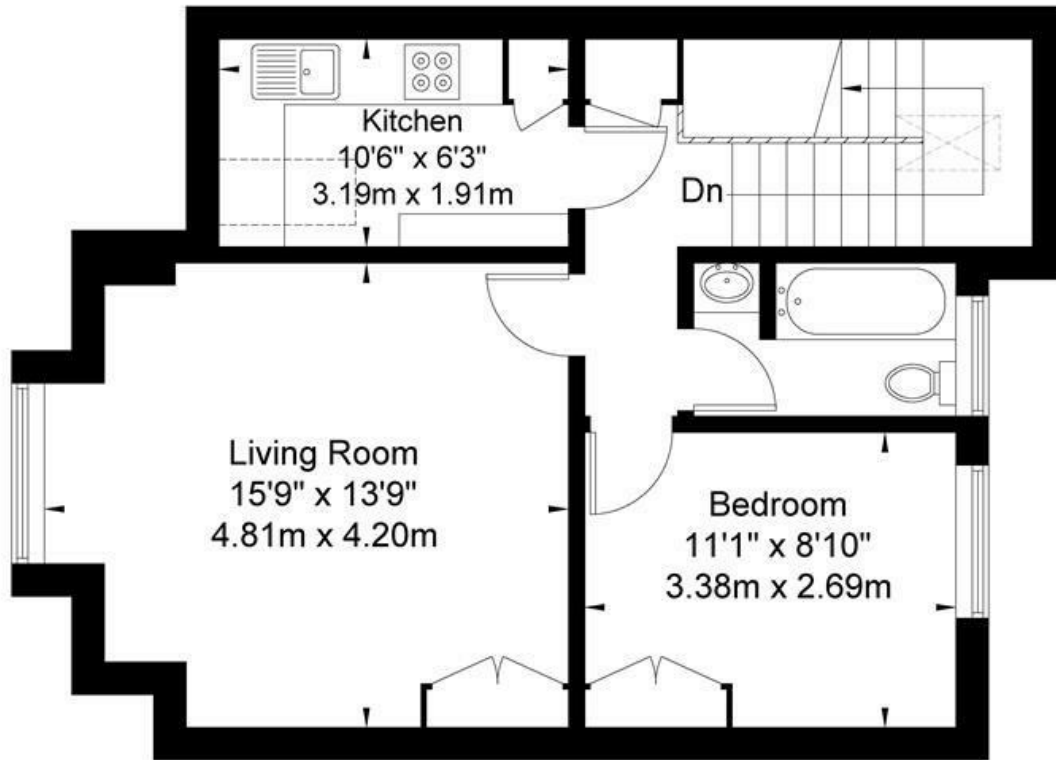
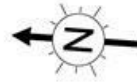
- Bright 1 bedroom, 1 bathroom Top Floor Flat
- Spacious reception room
- Fully fitted in eat-in kitchen
- Double bedroom with fitted wardrobes
- Garage space
- Transport: Willesden Green (Jubilee- Zone 2)
- TAX BAND: Brent (C)
- Deposit: £1,903
- Viewing is highly recommended



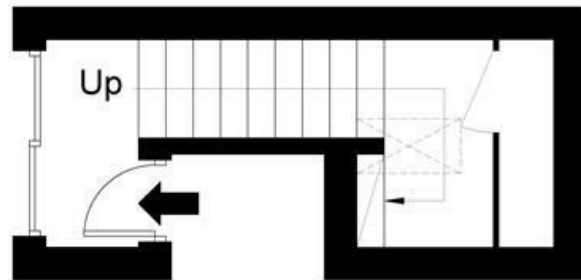
020 8450 9377 - 020 8459 1133
rentals@cameronsstiff.co.uk

Blenheim Gardens, NW2 4NT

Approx. Gross Internal Area = 55.4 sq m / 596 sq ft



First Floor



Ground Floor

Ref

Copyright **BLEU
PLAN**

The Floor plan is not to scale and measurements and areas shown are approximate and therefore should be used for illustrative purposes only. The plan has been prepared in accordance with the RICS code of Measuring Practice and whilst we have confidence in the information produced it must not be relied on. If there is any aspect of particular importance, you should carry out or commission your own inspection of the property.

Copyright @ BLEUPLAN

EPC: C

Ref: 18486697

