



Pinkmove

## The Meadows

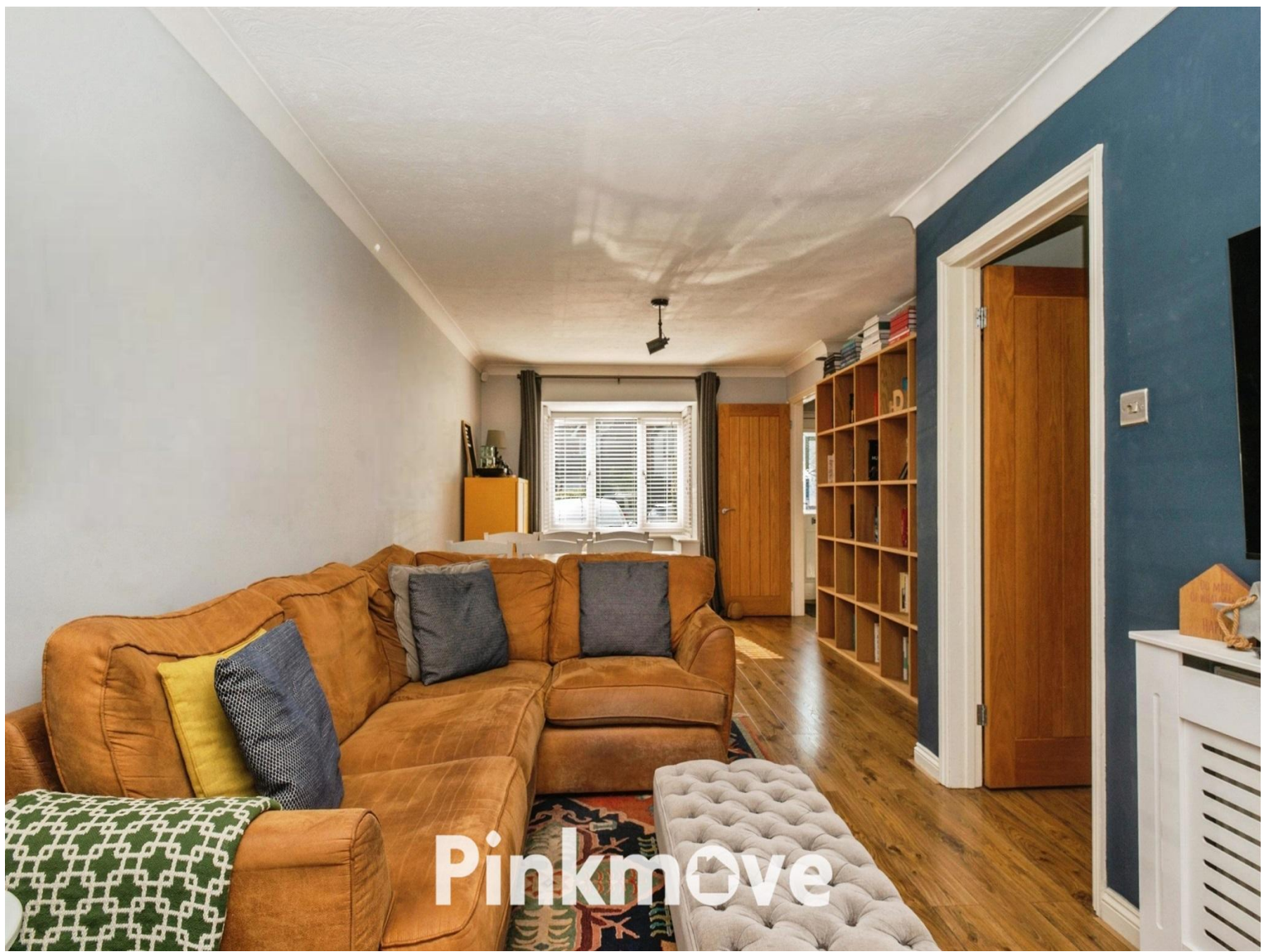
Guide Price £400,000 to £425,000

- Four bedrooms
- Principal bedroom with en-suite
- Impressive open-plan living and dining room
- Modern fitted kitchen with utility room and ground-floor WC
- Flat, low-maintenance rear garden
- Driveway providing off-road parking
- Detached family home



Pinkmove

01633 746088  
team@pinkmove.co.uk



## About the property

This well-presented detached family home offers spacious and versatile accommodation ideal for modern living.

Upon entering, a welcoming entrance hallway provides access to the main living spaces. To the left is a cosy yet well-proportioned lounge, perfect as a snug, formal sitting room, or quiet retreat away from the main living area. To the right, the property really comes into its own with an impressive open-plan living and dining room. Flooded with natural light and offering excellent flexibility, this space is ideal for both family life and entertaining, with room for a dining table and comfortable seating area.

The open-plan layout continues through to the well-appointed kitchen, which features sleek cabinetry, wood-effect worktops, and ample storage and preparation space. A large window overlooks the rear garden, allowing plenty of natural light to fill the room, while the adjoining utility area and ground-floor WC add further everyday practicality. From the kitchen and living area, there is direct access out to the rear garden.

Upstairs, the property offers four bedrooms, including a generous principal bedroom with en-suite shower room, two further double bedrooms, and a single bedroom ideal as a home office or child's room. A family bathroom completes the first-floor accommodation. Externally, the property features a flat, low-maintenance rear garden, ideal for outdoor entertaining, and a spacious driveway to the front providing off-road parking.





## Accommodation

Lounge

Dining/Living Room

Kitchen

Utility

Wc

Bedroom 1

En Suite

Bedroom 2

Bedroom 3

Bedroom 4

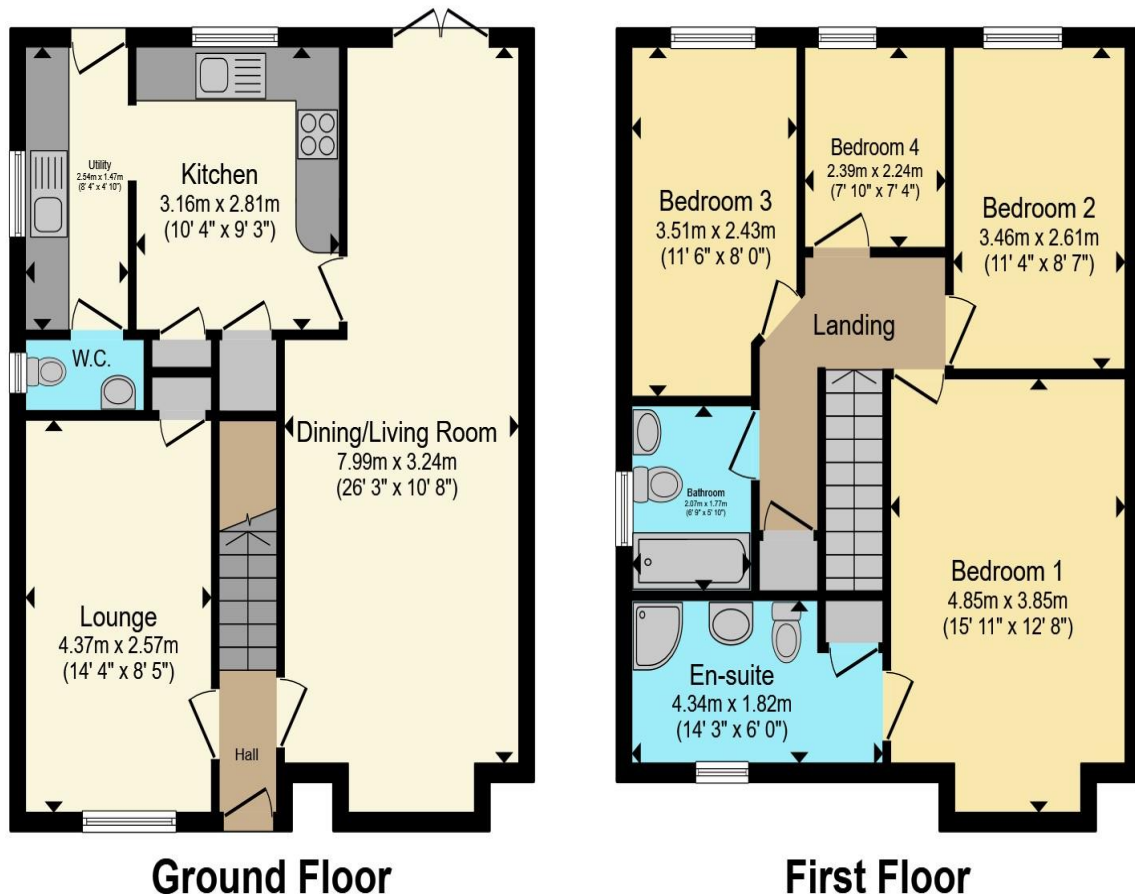
Bathroom

01633 746088

team@pinkmove.co.uk

**Pinkmove**

## Floorplan



**Ground Floor**

**First Floor**

Total floor area 112.6 sq.m. (1,213 sq.ft.) approx

This floor plan is for illustrative purposes only. It is not drawn to scale. Any measurements, floor areas (including any total floor area), openings and orientation are approximate. No details are guaranteed, they cannot be relied upon for any purpose and they do not form part of any agreement. No liability is taken for any error, omission or misstatement. A party must rely upon its own inspection(s). Powered by [www.focalagent.com](http://www.focalagent.com)

Pinkmove

## Important Information

Note while we endeavour to make our sales details accurate and reliable, if there is any point which is of particular interest to you, please contact the office and we will be pleased to confirm the position for you. We have not personally tested any apparatus, equipment, fixtures, fittings or services and cannot verify they are in working order or fit for their purposes. Nothing in these particulars is intended to indicate that carpets or curtains, furnishings or fittings, electrical goods (whether wired or not). Gas fires or light fittings or any other fixtures not expressly included form part of the property offered for sale. This computer generated Floorplan, if applicable, is intended as a general guide to the layout and design of the property. It is not to scale and should not be relied upon for dimensions. Tenure: We cannot confirm the tenure of the property as we have not had access to the legal documents. The buyer is advised to obtain verification from their solicitor or surveyor.

Peter Alan Limited is registered in England and Wales under company number 2073153. Registered Office is Cumbria House, 16-20 Hockliffe Street, Leighton Buzzard, Bedfordshire, LU7 1GN. VAT Registration Number is 500 2481 05. For activities relating to regulated mortgages and non-investment insurance contracts, Peter Alan Limited is an appointed representative of Connells Limited which is authorised and regulated by the Financial Conduct Authority. Connells Limited's Financial Services Register number is 302221. Most buy-to-let

