



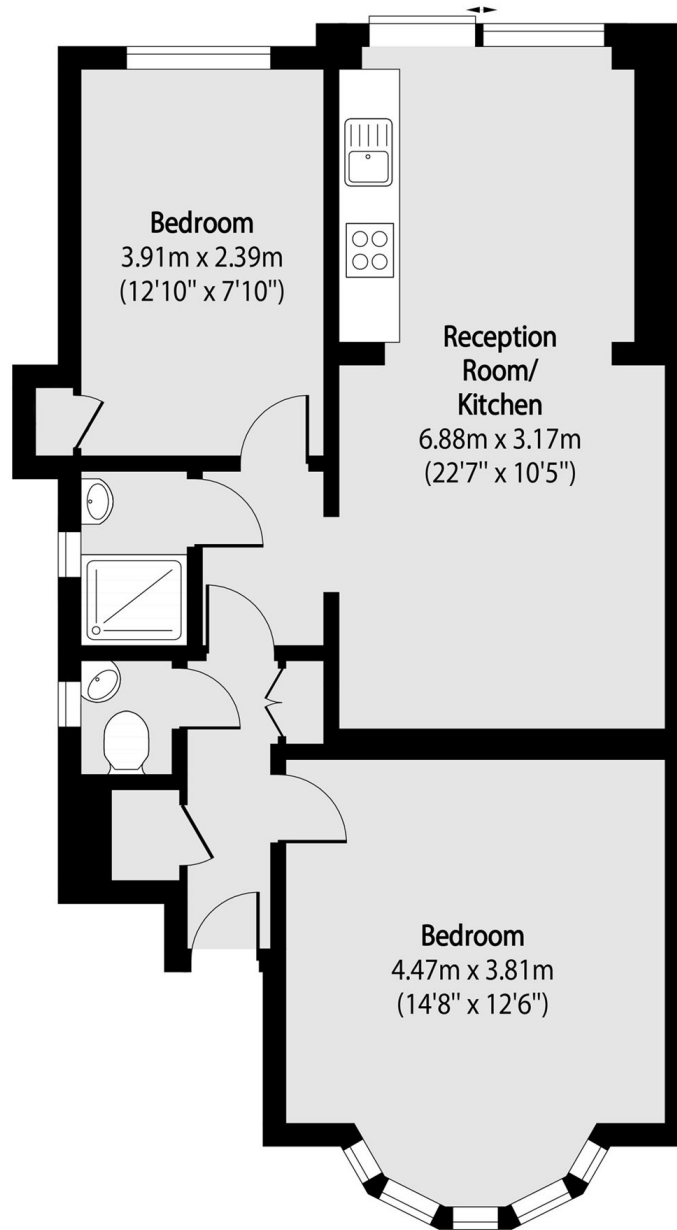
Eastcote Lane, HA2

£329,950

A spacious two bedroom ground floor maisonette with a private garden and off street parking. Featuring an open plan living/dining/kitchen area with patio doors onto the garden, two double bedrooms, a shower room and separate WC.

Eastcote Lane is located off Northolt Road with South Harrow Station and bus station 0.2 miles away. South Harrow's busy shopping center and local shops and amenities are also within easy reach.

- Ground Floor • Open Plan Living • Two Double Bedrooms •
- Garden • Off Street Parking • No Onward Chain •



Total area (approx): 58.99 sq m (635 sq. ft)

David Conway
020 8422 5222

Energy Rating: C We aim to make our particulars both accurate and reliable. However they are not guaranteed; nor do they form part of an offer or contract. If you require clarification on any points then please contact us, especially if you're travelling some distance to view. Please note that appliances and heating systems have not been tested and therefore no warranties can be given as to their good working order.