



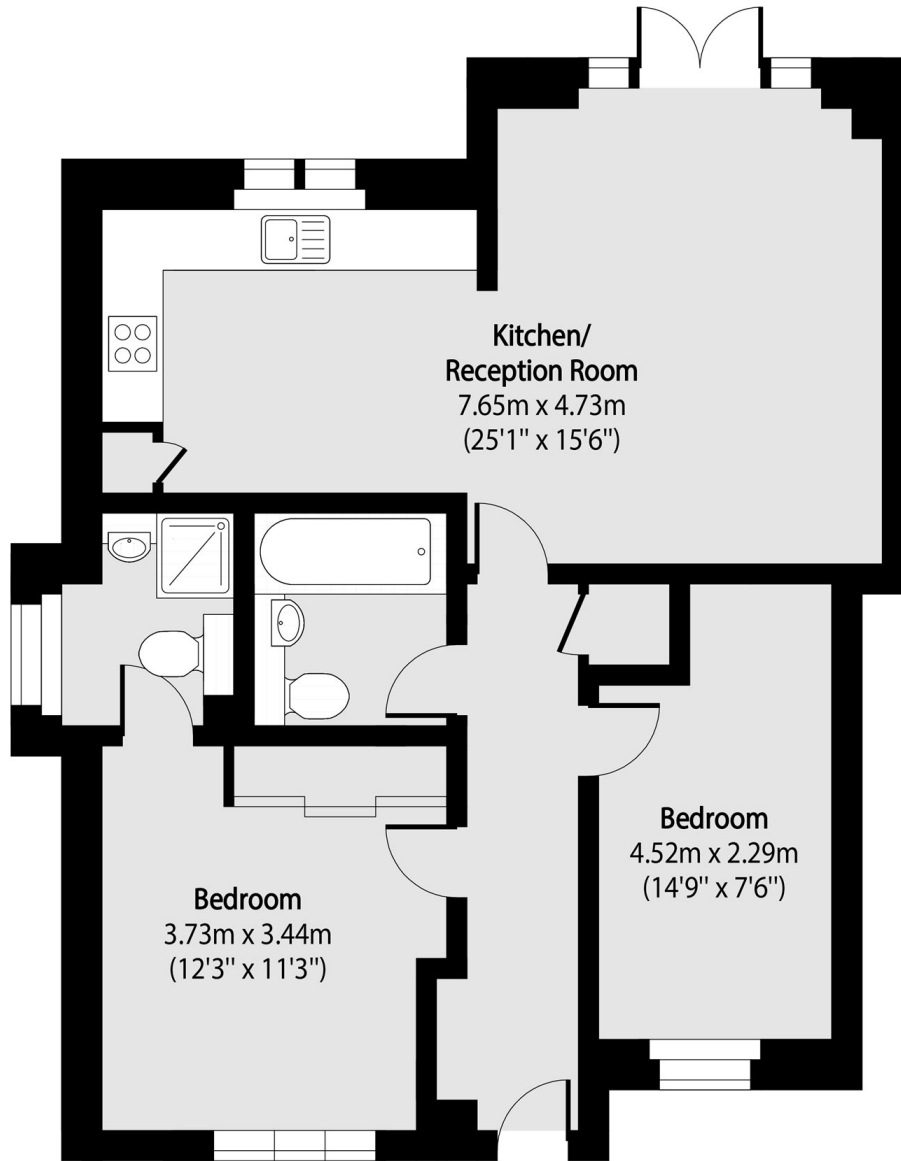
Risingholme Road, HA3

£345,000

The property features contemporary open plan living. The principle bedroom has fitted wardrobes and an en suite and a spacious second bedroom. Additionally benefits include the kitchen with integrated appliances and direct access to the communal garden from the living room via patio doors.

Risingholme Road is close to Harrow & Wealdstone Station, ideal for commuters providing easy access to transportation. Wealdstone High Street with its shops, restaurants and local amenities is also close by.

- Maisonette • Gated Allocated parking • Secure Gated •
- Communal Garden • Underfloor Heating • Two Bedrooms •



Total area (approx): 69.59 sq m (749 sq. ft)

David Conway
020 8422 5222

Energy Rating: B We aim to make our particulars both accurate and reliable. However they are not guaranteed; nor do they form part of an offer or contract. If you require clarification on any points then please contact us, especially if you're travelling some distance to view. Please note that appliances and heating systems have not been tested and therefore no warranties can be given as to their good working order.