

Elvin Gardens, HA9

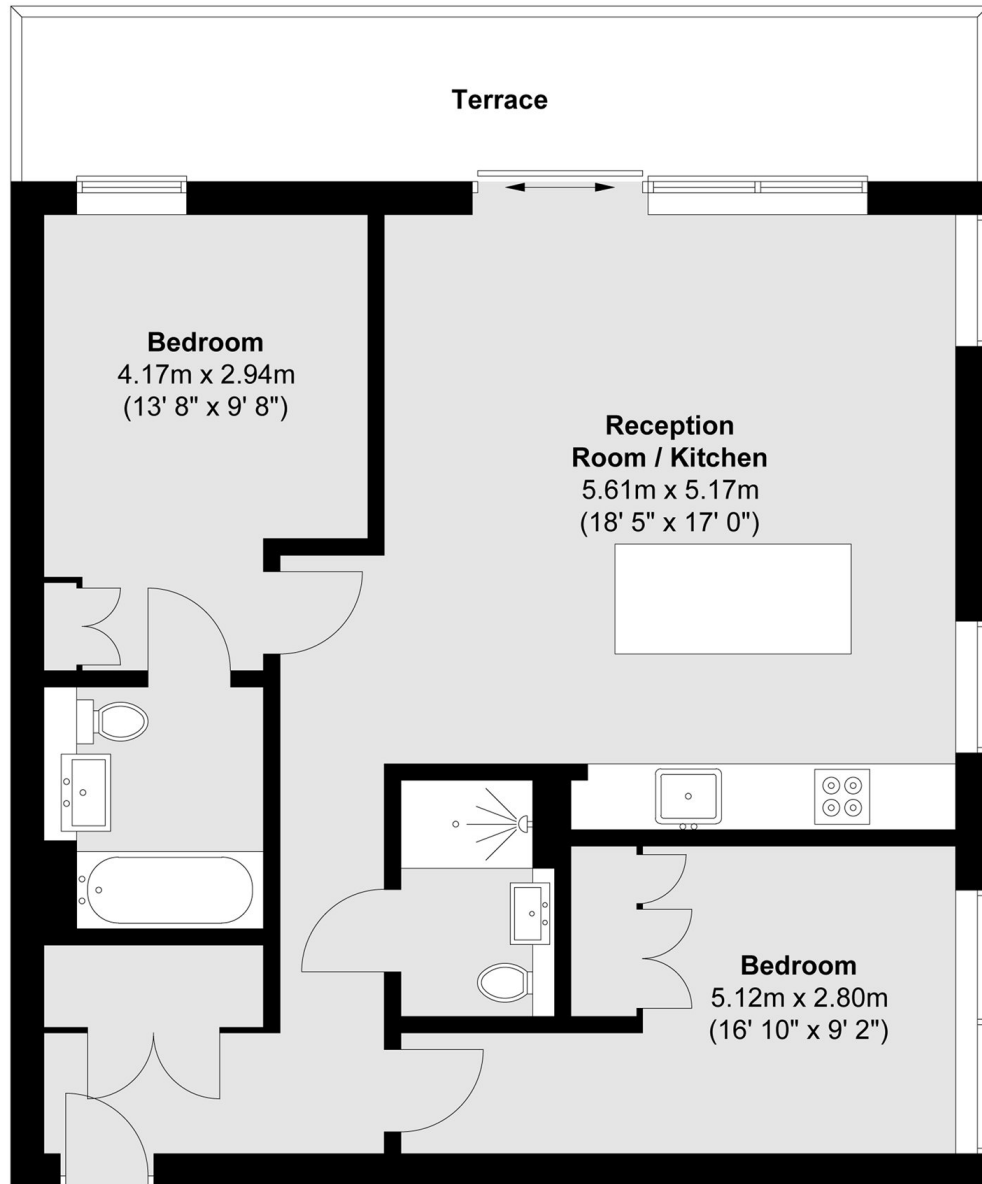
£550,000

A superb ninth floor two bedroom, two bathroom apartment set within Belcanto Apartments, offering a bright open-plan reception/kitchen, stylish fitted kitchen, principal bedroom with en-suite, further double bedroom and a large private terrace.

Belcanto Apartments forms part of the Alto development in Wembley Park, with residents' amenities including a 24-hour concierge, on-site gym, spa facilities and landscaped/private water gardens. Wembley Park Station, Boxpark Wembley, London Designer Outlet, restaurants, shops and Wembley Stadium are all close by, with Metropolitan and Jubilee line links into Central London.

- Ninth Floor Apartment • Two Double Bedrooms • Two Sleek Bathrooms •
- Large Private Terrace • Concierge And Gym • Wembley Park Location •

Ninth Floor



Total area (approx.) : 71.4 sq. m (768 sq. ft)
Total terrace area (approx.) : 13 sq. m (140 sq. ft)

David Conway
020 8422 5222

Energy Rating: B We aim to make our particulars both accurate and reliable. However they are not guaranteed; nor do they form part of an offer or contract. If you require clarification on any points then please contact us, especially if you're travelling some distance to view. Please note that appliances and heating systems have not been tested and therefore no warranties can be given as to their good working order.