



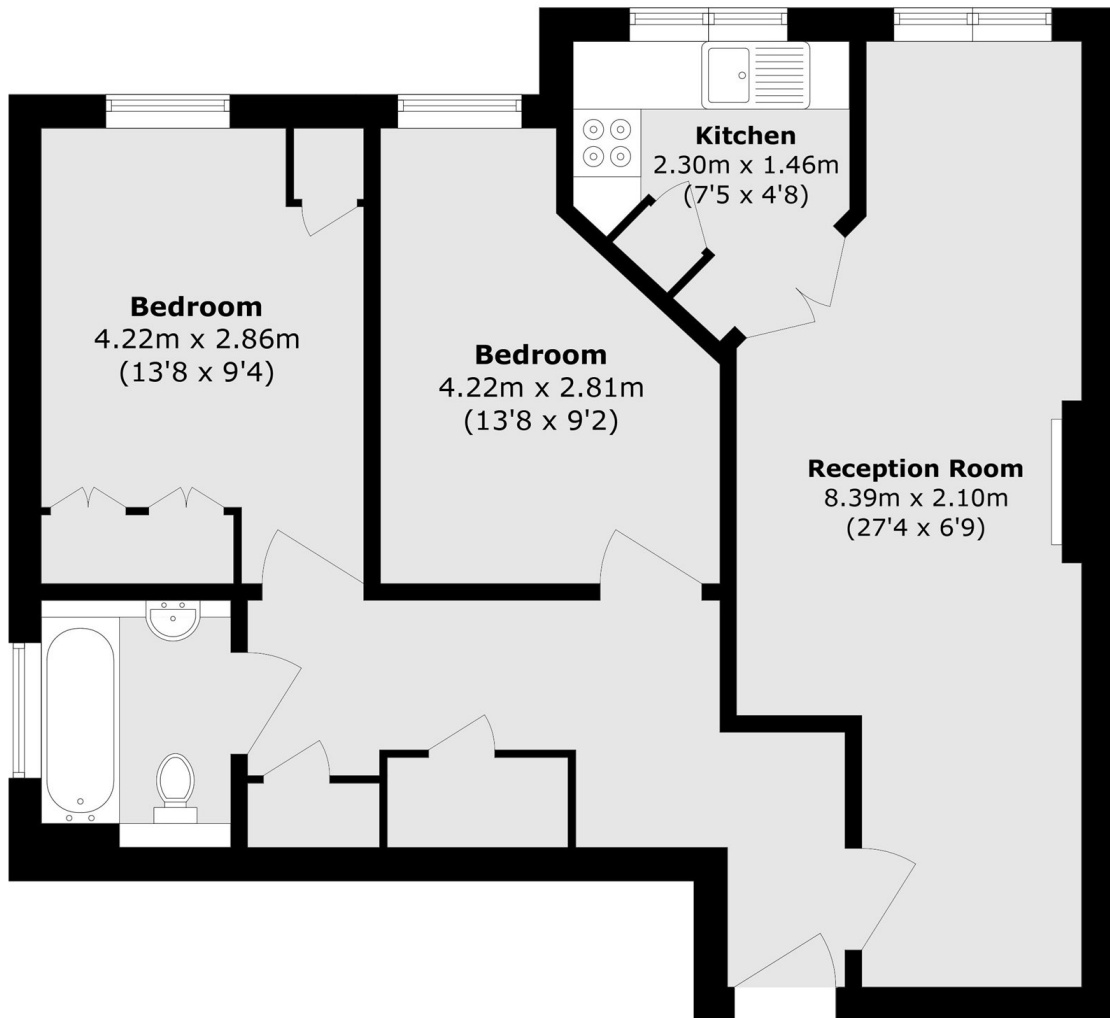
Farnham Close, N20

£160,000

For sale via Secure Sale online bidding (terms apply), starting at £160,000. Features include a spacious hall with storage, reception/dining room with doors to a fitted kitchen, two double bedrooms with fitted wardrobes, and a bathroom. Benefits include a warden-assisted setting, residents' lounge, laundry room, guest suite, communal gardens, and off-street parking.

Conveniently located for a variety of local shops, cafés and bus routes, with Totteridge & Whetstone Underground Station and Oakleigh Park mainline station both within easy reach, providing excellent transport connections into Central London and surrounding areas.

- Two Bedrooms • Communal Lounge • Communal Garden •
- No Onward Chain • Parking • Warden Assisted Block •



Total area (approx.): 66.3 sq. m (713.6 sq. ft)

David Conway
020 8422 5222

Energy Rating: D We aim to make our particulars both accurate and reliable. However they are not guaranteed; nor do they form part of an offer or contract. If you require clarification on any points then please contact us, especially if you're travelling some distance to view. Please note that appliances and heating systems have not been tested and therefore no warranties can be given as to their good working order.